

Wind power generation cms system





Overview

Does the wind turbine safety chain need a CMS?

However, as part of the wind turbine safety chain, it is an essential part of the WTC. These are usually provided by the OEM, however in some instances where controller access is provided, CMS can be integrated into the WTC to enable remote resets and stops such as ice detection systems.

How a condition monitoring system can improve the efficiency of wind turbines?

It is evident from the study of the advancement on condition monitoring systems used in wind turbines that the researchers had emphasized a few aspects. The enhancement of algorithms, could improve the accuracy and efficiency of the condition monitoring systems.

What is the difference between a CMS and a wind turbine sensor?

These are not high-precision sensors, unlike wind turbine CMS—where the fidelity of measurements affects downstream processing. With a CMS, understanding the sensitivity, bandwidth, and accuracy of the chosen sensor is important, as well as knowing if it can determine component health on all of the fault modes that can affect it.

What is a prognosis for a wind turbine CMS?

A prognosis for a wind turbine CMS is used slightly differently. Instead of changing future operating conditions to prevent component failure, an estimate is used to determine when the component will reach the end of its useful life. Figure 4 show a graphical example of the projection of future component health.



Wind power generation cms system



[Understanding Wind Turbine Condition Monitoring ...](#)

Apr 24, 2018 · Understanding Wind Turbine Condition Monitoring Systems More and more, the wind industry is recognizing the value of condition monitoring. This shift is driven by two major ...

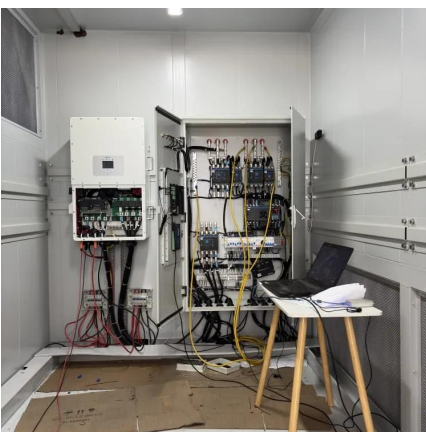
[Recent advancements in condition monitoring systems for wind ...](#)

Oct 1, 2023 · A robust embedded system in a wind energy generation system can provide a reliable, efficient, and economical link between discrete wind turbine sensors for accurate and ...



[What Is Condition Monitoring System \(CMS\) in Wind Turbines?](#)

Jun 26, 2025 · Understanding Condition Monitoring Systems (CMS) Condition Monitoring Systems (CMS) play a crucial role in the wind energy sector, providing essential insights into ...



[Condition Monitoring System for Wind Turbines](#)

Sep 8, 2021 · NTN's Condition Monitoring System for Wind Turbines (CMS) is able to detect failure conditions in components early on, helping to prevent damage from worsening. This ...



[Wind Turbine Condition Monitoring - The Complete ...](#)

Nov 12, 2024 · Control linked vs non-control linked Condition Monitoring Systems (CMS) linked to the wind turbine controller (WTC) are set to stop the turbine to prevent further damage or ...

[Wind turbine monitoring: CMS and digital twins . Business ...](#)

Jan 15, 2025 · Discover how wind turbine monitoring systems and digital twins improve efficiency. Understand condition monitoring and its role in maintenance strategies.



Contact Us

For catalog requests, pricing, or partnerships, please visit:
<https://www.woodgoods.pl>



Scan QR Code for More Information



<https://www.woodgoods.pl>