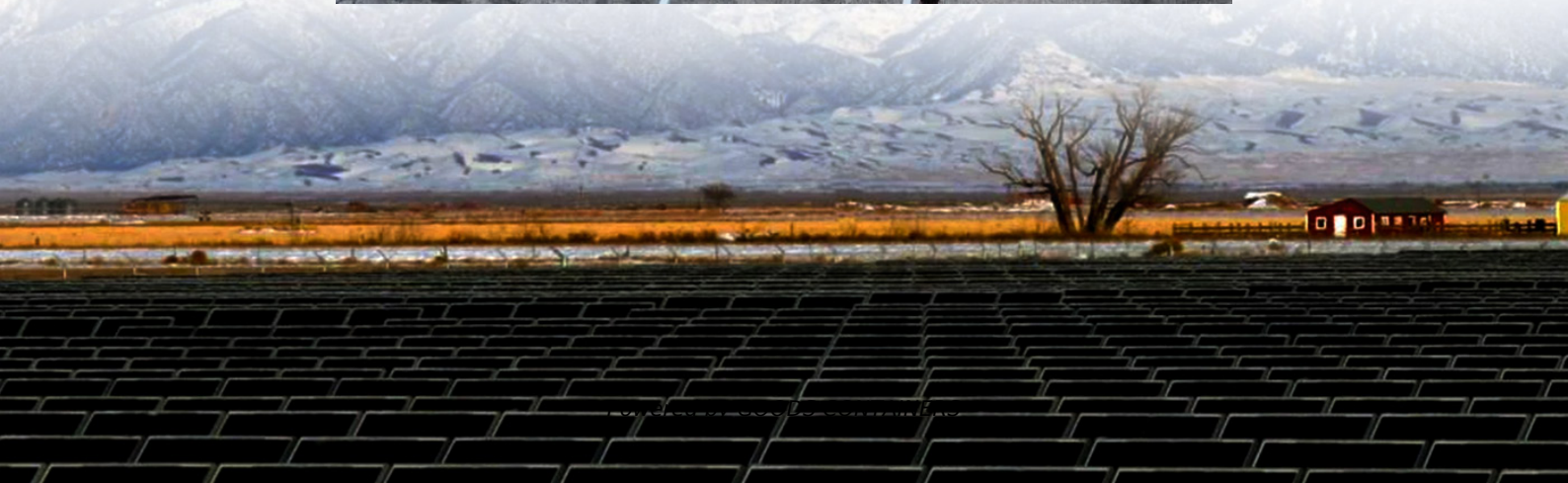
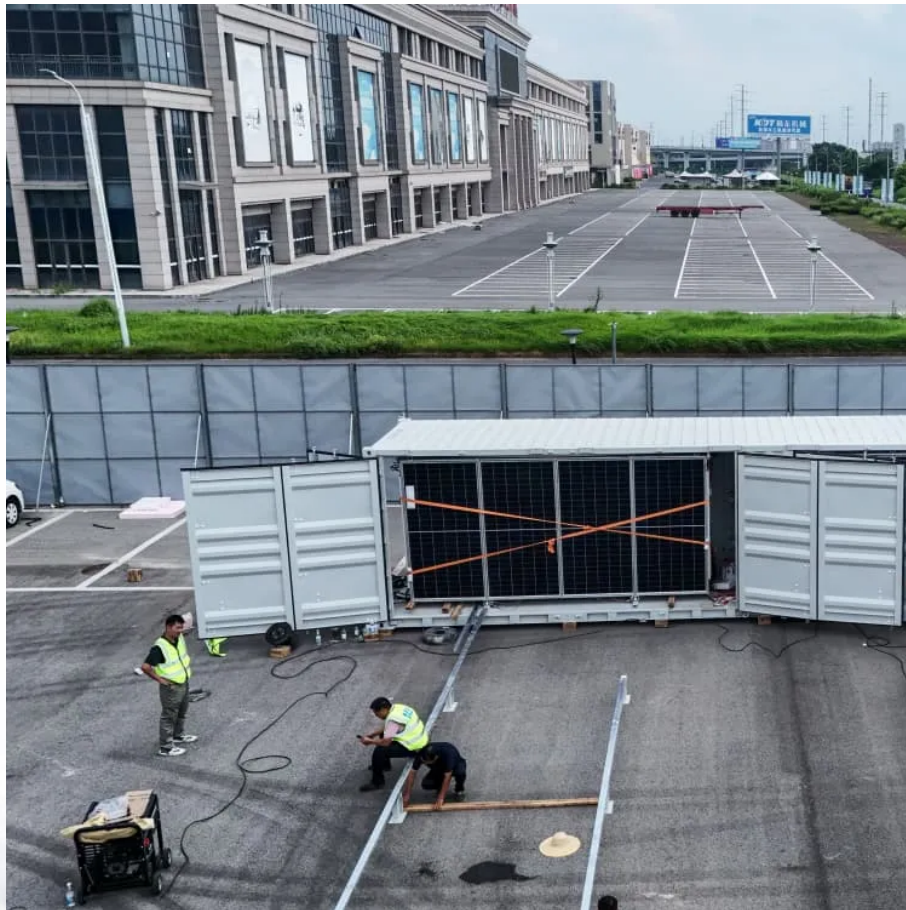


Will solar glass break into slag when subjected to external force





Overview

Glass breaks when an applied load exceeds the strength of the glass. The big question is:

What causes glass breakage in solar panels?

The glass breakages observed occur in modules with a surface area of more than 2.5 square meters. The largest modules on the market today cover more than 3 square meters. The size of the modules is one cause of glass breakage. The Fraunhofer Institute for Solar Energy Systems (ISE) has tested in the laboratory what other correlations there are.

Are solar modules Breaking Glass?

The pv magazine editorial team includes specialists in equipment supply, manufacturing, policy, markets, balance of systems, and EPC. Solar modules are getting bigger, thinner, and more powerful. But from Texas to Thailand, the same problem is appearing: broken glass.

Do glass-glass modules break under a lower load?

The latter broke under a significantly lower load than the other module types. While the first glass-glass modules with thinner glass and the first glass-foil modules only showed cracks at more than 5,400 pascals, this was the case for the modules with 2-millimeter glass between 3,500 and 4,700 pascals.

How common is glass breakage in PV modules?

A customer complaints research, on PV modules after two years of operation, observed glass breakage for 10% of the failure cases [28]. Another study on PV failures observed an even higher failure-share for glass breakage.



Will solar glass break into slag when subjected to external force

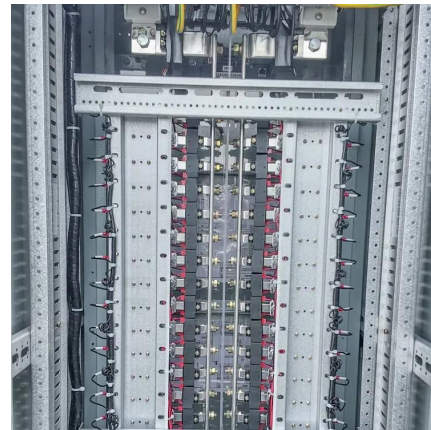


[Experimental repair technique for glass defects of glass-glass](#)

Aug 1, 2023 · A sample set of six specimen was used for this research, divided into two distinctive groups: as-received glass-glass PV modules and glass-glass PV modules with glass defects.

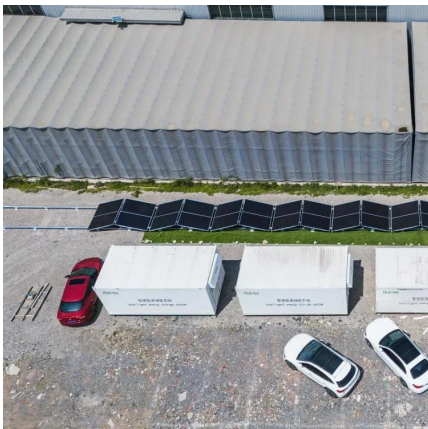
[What happens if the solar glass breaks? .. NenPower](#)

Apr 14, 2024 · What happens if the solar glass breaks? If solar glass breaks, it compromises the effectiveness of solar panels, leads to potential safety hazards, can result in significant ...



[Glass breakage in large modules without external influence](#)

Research at Fraunhofer ISE: Which modules break first in the lab? In the laboratory, the scientists examined commercially available PV module types with a surface area of two square meters: ...



[Mechanical Stability of PV Modules: Analyses of the ...](#)

Aug 5, 2024 · A significant increase in reported glass breakages from the field was recognized during the past three years, where a disproportionately high number of modules were affected ...



[Top 5: Factors Responsible for Glass Breakage in Solar Modules](#)

Mar 13, 2025 · Glass breakage is a growing concern for the solar power plant operators. With the trend towards double glass sided modules as seen in Bifacials, or TOPCon with double glass ...

Contact Us

For catalog requests, pricing, or partnerships, please visit:
<https://www.woodgoods.pl>

Scan QR Code for More Information



<https://www.woodgoods.pl>