

Which side of the solar panel faces upwards





Overview

What direction do solar panels face?

The direction your panels face dictates how many hours of peak sun they receive. In the Northern Hemisphere, south-facing panels capture the most light, generating 15-25% more power than east or west-facing panels. East-facing panels are best for morning energy, while west-facing panels peak in the afternoon. Peak sunlight hours by orientation:.

Which direction should solar panels be positioned?

Geographic location, seasonal sun patterns, and local climate conditions all influence the ideal orientation strategy. Solar panels achieve maximum energy production when positioned to face true south in the Northern Hemisphere. This orientation captures the most direct sunlight throughout the day as the sun travels its east-to-west path.

Why do solar panels face and tilt angle work together?

The direction panels face and their tilt angle work together to maximize energy production from available sunlight. Solar panel orientation refers to the compass direction that solar panels face when installed. This positioning determines which cardinal direction – north, south, east, or west – the panel surface points toward during operation.

What is solar panel orientation?

Solar panel orientation refers to the compass direction that solar panels face when installed. This positioning determines which cardinal direction – north, south, east, or west – the panel surface points toward during operation. The orientation choice directly affects how much direct sunlight panels receive throughout the day.



Which side of the solar panel faces upwards



One Stop Solar

South is the best direction for solar panels to capture the most sunlight in the Northern Hemisphere. In the Southern Hemisphere, north-facing panels work best. Equatorial regions often benefit from panels ...

[Solar Panel Direction & Orientation: 2025](#)

...

Discover the optimal direction and angle for solar panels to maximize energy output. Complete guide with calculations, tools, and location-specific recommendations for 2025.



[Which side of the solar photovoltaic panel faces up?](#)

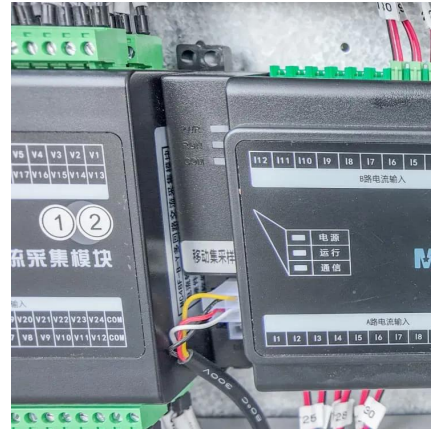
The orientation of a solar photovoltaic panel plays a crucial role in maximizing solar energy absorption throughout the day. 1. The upper surface of the panel is typically the ...

[Solar Panel Direction & Orientation: 2025 Complete Guide](#)

Discover the optimal direction and angle for solar panels to maximize energy output. Complete



guide with calculations, tools, and location-specific recommendations for 2025.

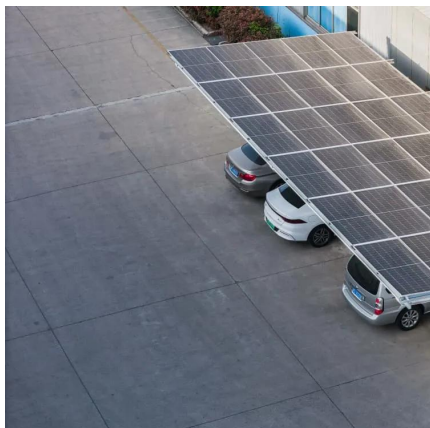


What direction should solar panels face?

The direction your solar panels face directly impacts the amount of sunlight they receive, which in turn affects the electricity generated. This guide will explore the factors influencing sunlight ...

Which side of the solar cell is facing up?

In summary, aligning solar panels with the photovoltaic side facing upwards is crucial for optimal performance and energy generation. Emphasizing installation precision, maintenance, and understanding ...



Solar panel orientation

Solar panels, however, need to face solar or geographic south, which is the direction towards the South Pole. [3] By the same reasoning, if the solar panel is located in the southern hemisphere, the ...



What direction should solar panels face?

The direction your solar panels face directly impacts the amount of sunlight they receive, which in turn affects the electricity generated. This guide will explore the factors ...

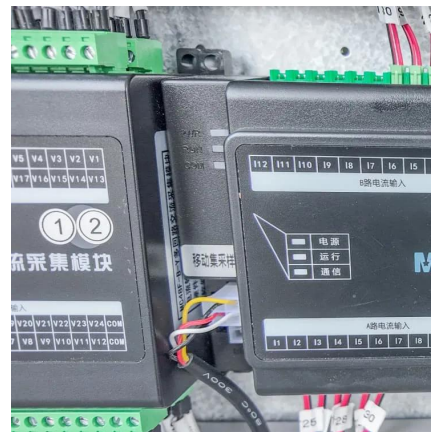


Which side of the solar photovoltaic panel ...

The orientation of a solar photovoltaic panel plays a crucial role in maximizing solar energy absorption throughout the day. 1. The upper surface of the panel is typically the side containing solar cells, which are ...

Solar Panel Orientation: Find the Best Angle ...

Solar panel orientation refers to the compass direction that solar panels face when installed. This positioning determines which cardinal direction - north, south, east, or west - the panel surface points toward ...



Solar Panel Orientation: Everything You Need to Know

Solar panel orientation refers to the placement, direction, and angle of solar panels, specifying the cardinal direction the panel faces, which helps it receive direct sunlight ...



What Way Should Solar Panels Face for Max Power

Here's the simple truth: For the Northern Hemisphere, solar panels should face south. If you live in the Southern Hemisphere, they must face north. This one rule is the ...



Solar Panel Orientation: Find the Best Angle and Direction

Solar panel orientation refers to the compass direction that solar panels face when installed. This positioning determines which cardinal direction - north, south, east, or west - ...

Which side of the solar cell is facing up?., NenPower

In summary, aligning solar panels with the photovoltaic side facing upwards is crucial for optimal performance and energy generation. Emphasizing installation precision, ...





Contact Us

For catalog requests, pricing, or partnerships, please visit:
<https://www.woodgoods.pl>

Scan QR Code for More Information



<https://www.woodgoods.pl>