

# **What size inverter should I choose for a 37kw motor**





## Overview

---

How big should a solar inverter be?

To account for power losses assume an 80 percent efficiency. Your solar inverter should have a similar or slightly higher wattage rating than the DC output of your solar panels (which in this case is 4.5 kW). You can size it between 1.15 and 1.5 times larger. The rule of thumb is to size your inverter 1.25 bigger than your solar array.

Do I need an inverter size chart?

The need for an inverter size chart first became apparent when researching our DIY solar generator build. Solar generators range in size from small generators for short camping trips to large off-grid power systems for a boat or house. Consequently, inverter sizes vary greatly.

How much power does an inverter need?

The continuous power requirement is actually 2250 but when sizing an inverter, you have to plan for the start up so the inverter can handle it. Third, you need to decide how long you want to run 2250 watts. Let's say you would like to power these items for an eight-hour period.

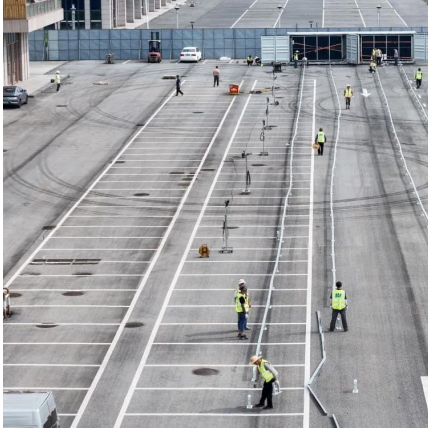
How many Watts Does a solar inverter use?

Depending on where they fall in that band and the size of their solar array, they will likely use a 3, 5, or 10kW inverter. You also need to consider surge watts and voltage drop. Surge watts are the extra power required to start appliances that have motors, such as refrigerators and air conditioners.



## What size inverter should I choose for a 37kw motor

---



### [What Size Inverter Do I Need? A Complete Guide for DIY ...](#)

Sep 23, 2025 · Utilize inverter sizing calculators to simplify your selection process. Ensure proper compatibility between your inverter and battery systems. When planning your solar power or ...

### [Choosing the Right Inverter: What Size Inverter Do I Need?](#)

Jun 27, 2024 · The inverter should be able to handle this surge power without being overloaded. Check the specifications of your appliances to determine their surge power requirements, and ...



### [How to Choose the Right Size Solar Inverter: Step-by-Step ...](#)

Jul 15, 2025 · Wondering what size solar inverter do I need for your solar system? This guide walks you through calculating inverter size based on panel capacity, power usage, and safety ...

### [What Size Inverter Do I Need ?A Complete Guide to ...](#)

Jun 12, 2025 · Discover how to select the perfect inverter size for your solar or backup power system. Learn to calculate power requirements, account for surge loads, match battery ...



### [The Only Inverter Size Chart You'll Ever Need](#)

How to Determine What Size Inverter I Need? What Are The Two Types of Power loads? Inverter Size Chart What Will A 300W Inverter Run? What Will A 500W Inverter Run? What Will A 700W Inverter Run? What Will A 1000W Inverter Run? What Will A 1500W Inverter Run? What Will A 2000W Inverter Run? What Will A 3000W Inverter Run? Before we go any further, we highly recommend that you choose a pure sine wave inverter. This type of inverter delivers high-quality electricity, similar to your utility company. This way, none of your appliances run the risk of being damaged. Now, when it comes to sizing your inverter, you always need to check your appliances' wattage and ensure t See more on [climatebiz chinagode](#)

### **What Size Inverter Do I Need? A Complete ...**

Jun 12, 2025 · Discover how to select the perfect inverter size for your solar or backup power system. Learn to calculate power requirements, account ...

## **Contact Us**

---

For catalog requests, pricing, or partnerships, please visit:  
<https://www.woodgoods.pl>



## Scan QR Code for More Information



<https://www.woodgoods.pl>