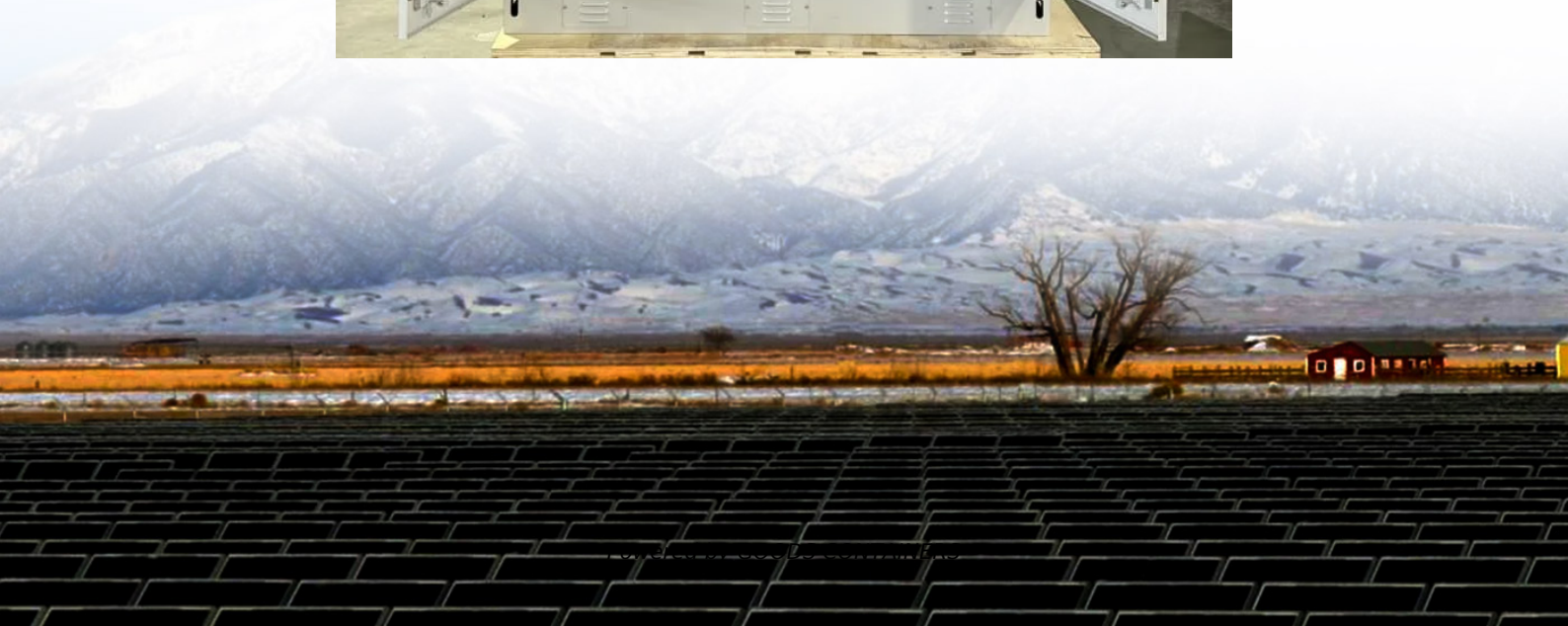


# What is the control type of energy storage power station





## Overview

---

What are battery storage power stations?

Battery storage power stations are usually composed of batteries, power conversion systems (inverters), control systems and monitoring equipment. There are a variety of battery types used, including lithium-ion, lead-acid, flow cell batteries, and others, depending on factors such as energy density, cycle life, and cost.

Why is system control important for battery storage power stations?

In addition, the system must hierarchically store data in the database to ensure that the granularity of comprehensive monitoring of the system reaches the minute level. Secondly, effective system control is crucial for battery storage power stations.

What are the core functions of energy storage power stations?

In addition to these core functions, functions such as anti-backflow protection, support for parallel/off-grid operation, and islanding protection further enhance the reliability and versatility of energy storage power stations.

What is grid-connected control strategy of energy storage system?

Grid-connected control strategy of energy storage system based on additional frequency control. 1. Existing flat/smooth control strategy. The power of the PV station is taken as the input signal. The output power of the ESS is generated to suppress the fluctuation of the PV/ESS station according to different time scales.



## What is the control type of energy storage power station

---



### [The Best of the BESS: The Role of Battery Energy Storage ...](#)

Oct 24, 2025 · In an era of rapid technological advancement and increasing reliance on renewable energy, battery energy storage systems (BESS) are emerging as pivotal players in ...

### **The Brain Behind Energy Storage: How Control Systems Power Modern Stations**

Dec 15, 2024 · Ever tried herding cats while juggling flaming torches? That's essentially what an energy storage station control system does daily - but with megawatts instead of felines. As ...



### [Evaluation of Control Ability of Multi-type Energy Storage Power](#)

Apr 2, 2024 · 3.1 AHP The AHP can comprehensively consider various factors, and organically combine qualitative and quantitative methods to decompose complex systems. The AHP is ...

### [What does the energy storage power station control?](#)

Mar 11, 2024 · Finally, investments in energy storage technology can stimulate job creation in manufacturing, installation, and maintenance, contributing positively to economic growth in the ...

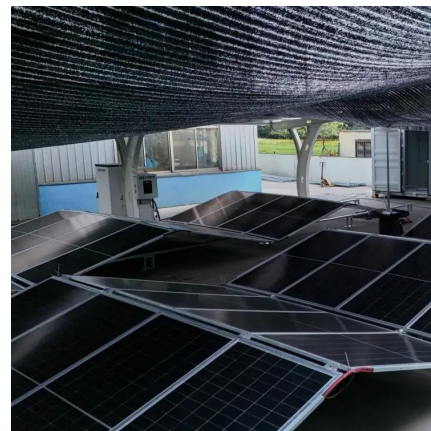


### [Research on Control Strategy of Energy Storage Power Station ...](#)

Sep 22, 2024 · Energy storage power station plays a key role in peak load shedding, stable operation, and voltage regulation. With the application of energy storage technology, its output ...

### [Battery storage power station - a comprehensive guide](#)

1 day ago · Battery storage power stations store electrical energy in various types of batteries such as lithium-ion, lead-acid, and flow cell batteries. These facilities require efficient operation ...



## Contact Us

---

For catalog requests, pricing, or partnerships, please visit:  
<https://www.woodgoods.pl>



## Scan QR Code for More Information



<https://www.woodgoods.pl>