

What is a micro inverter





Overview

What is a micro inverter?

A micro inverter is a device used in solar power systems to convert the DC generated by solar panels into alternating current (AC) that can be used in homes and businesses. Unlike traditional string inverters, which are connected to multiple solar panels, a micro inverter is typically installed on a single solar panel.

How do microinverters work?

Microinverters convert the electricity from your solar panels into usable electricity. Unlike centralized string inverters, which are typically responsible for an entire solar panel system, microinverters are installed at the individual solar panel site.

What is a solar panel microinverter?

Unlike centralized string inverters, which are typically responsible for an entire solar panel system, microinverters are installed at the individual solar panel site. Most solar panel systems with microinverters include one microinverter on every panel, but it's not uncommon for one microinverter to connect to a handful of panels.

What are the different types of micro inverters?

There are different types of micro inverters, which we are going to talk about in this section. String inverters are the most common type of micro inverter and are designed to convert the DC power that has been generated by a string of solar panels into usable AC power. They are typically installed at the beginning or end of the solar panel string.



What is a micro inverter

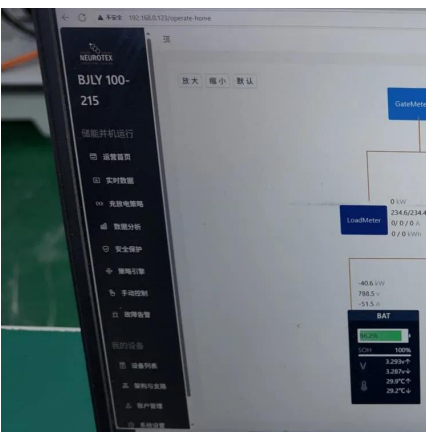


[What is a micro inverter + how does it work?](#)

Jul 30, 2025 · What is a micro inverter? A micro inverter is a device used in solar power systems to convert the DC generated by solar panels into alternating current (AC) that can be used in ...

What Is a Microinverter and How Does It Differ from String Inverters?

String inverters are also more suitable for installations where shading is not an issue and all panels receive uniform sunlight. Under these conditions, the difference in energy yield ...



[What Does a Microinverter Do? Benefits, Safety, and When ...](#)

Dec 5, 2025 · Which Should You Choose? Choose microinverters if your roof has multiple pitches, nearby trees/chimneys, or you want the best safety and per-panel visibility now and as you ...

Contact Us

For catalog requests, pricing, or partnerships, please visit:
<https://www.woodgoods.pl>



Scan QR Code for More Information



<https://www.woodgoods.pl>