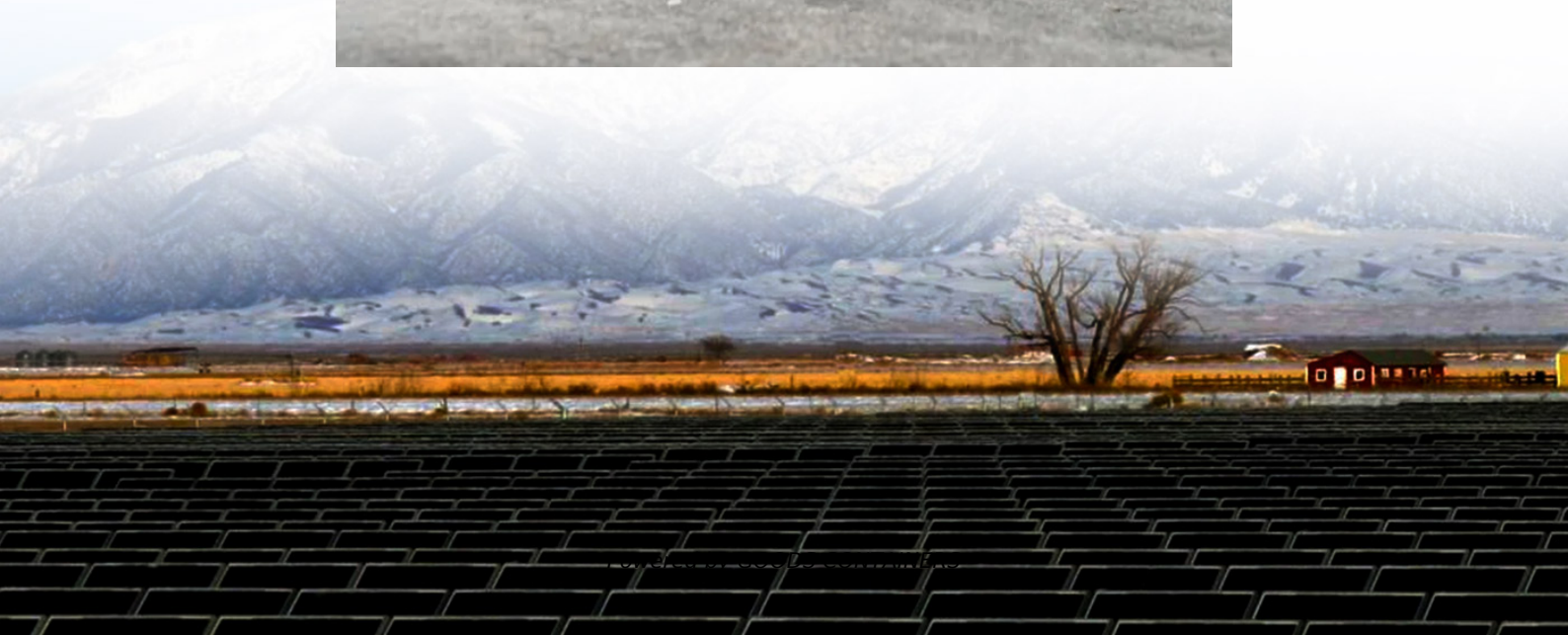


What generators are used in the Paris power station





Overview

Which type of generator does a power plant use?

And whenever you ask which type of generator does a power plant use, the easy answer is an electric generator. These generators can easily work on the mechanical energy and use it as an input. And eventually, it brings out electrical energy as an output. In short, the electric generators are here for generating AC electric power.

Why do power plants use Francis turbines?

When water flows to a lower elevation, the power plant generates electricity. When water is pumped to a higher elevation, the power plant creates a store of potential energy. Pumped storage plants use Francis turbines because they can act as both a hydraulic pump and hydraulic turbine. Francis Turbine.

What energy sources do power stations use?

You can see several energy sources that are used so that power stations can produce electrical power. However, to generate electricity, the power stations mostly use oil, natural gas, or coal. On the other hand, these also rely on hydropower and nuclear power. Another very major source is renewable energy.

What is the difference between a generator and a generating station?

The use or application of the generators is different but the method of generating electricity is the same for both of these. We all know what a Power Plant is. The generating station or power stations are the places where electrical power is produced. Well, the amount of electric power generated here is high or large scale.



What generators are used in the Paris power station

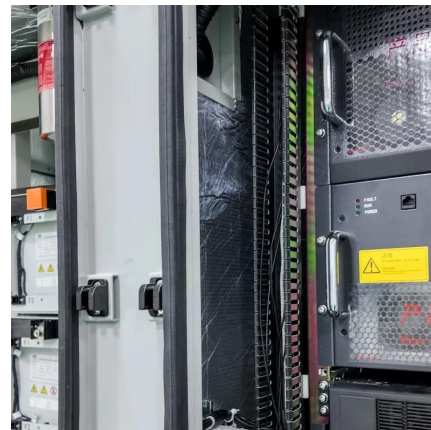


[Students design revolutionary metro turnstiles that generate ...](#)

Oct 6, 2023 · A global energy company and a group of French engineering students have made renewable power from routine human motion. Experts at Iberdrola, a global renewable energy ...

[Paris Energy Storage Power Plant Operation: Powering the ...](#)

Sep 13, 2023 · Let's face it - Paris and power outages have become an unlikely duo. Remember the 2024 Olympics blackout that turned the Eiffel Tower into a shadowy silhouette? While ...



[Getting Steady Power In Paris: Exploring Generators Near ...](#)

Aug 4, 2025 · Imagine, for a moment, a sudden power interruption in the heart of Paris, perhaps near the Colonel Fabien metro station. What would happen to homes, small shops, or even ...



[Paris Grid Energy Storage Power Station: Powering the City ...](#)

Jul 15, 2020 · Paris isn't just about croissants and the Eiffel Tower anymore. With 2.1 million residents and 16 million annual tourists [2], the



city's energy demands could power a small ...



[Types of Generators Used in Power Plants!](#)

Types of Generators in Electrical Engineering
Electric Generators
Diesel Generator
Synchronous Generators
Wrap Up
There are several generators that you can use for a power plant. Until it is an AC generator or electric generator, you can easily use it. All you need is to make sure that it is capable of powering and fulfilling the requirements of the power station. There are incredible brands for power station generators; check them out! See more on electricalaffairs INIS

Electricity supplies in a French nuclear power station

Jan 3, 2025 · More precisely, these safety functions are provided by two independent systems in the French nuclear power stations. Their operation is briefly described. Two different types of ...

[Metro Turnstiles Generate Renewable Electricity](#) [BioCycle](#)

Feb 27, 2024 · A pilot project in the summer of 2023 at the Miromesnil Metro Station in Paris converted six turnstiles into prototype mini turbines -- essentially underground wind turbines. ...



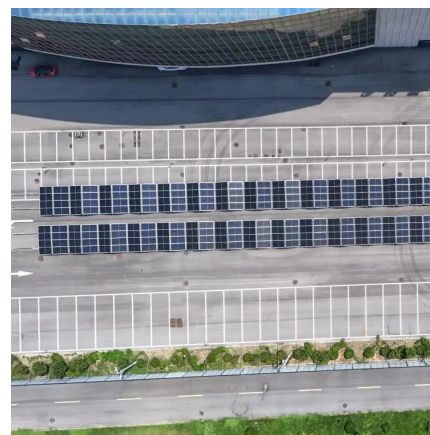


[Electricity supplies in a French nuclear power station](#)

Jan 3, 2025 · More precisely, these safety functions are provided by two independent systems in the French nuclear power stations. Their operation is briefly described. Two different types of ...

[They turn subway winches into turbines that generate energy](#)

Inspenet, August 30, 2023. Iberdrola transformed the subway turnstiles into power generators To commemorate "European Wind Day" in June, the Paris metro converted six access turnstiles ...



Contact Us

For catalog requests, pricing, or partnerships, please visit:
<https://www.woodgoods.pl>

Scan QR Code for More Information



<https://www.woodgoods.pl>