

# What does polycrystalline double-glass module mean





## Overview

---

What is a double glass solar module?

In the ever-evolving world of photovoltaic technology, double glass solar modules are emerging as a game-changer. By encapsulating solar cells between two layers of glass, these modules offer unparalleled durability and efficiency. But what exactly sets them apart?

What are double glass solar modules?

.

What is a double glass module?

In contrast, double glass modules replace the polymer layer with another glass sheet, creating a robust sandwich structure. At IBC SOLAR, we use 2,0 mm x 2,0 mm glass layers, whereas some other market offerings use thinner 1,6 mm x 1,6 mm layers. This ensures greater durability and longevity.

Why are double glass modules symmetrical?

Mechanical constraints on cells: the fact that the structure of the double glass modules is symmetrical implies that the cells are located on a so-called neutral line, the upper part of the module being in compression during a downward mechanical load and the lower glass surface being in tension.

What is the bifaciality of a double glass module?

Bifaciality: The bifaciality of double glass modules produces a gain of around 10-11% compared to the power measured on the front panel alone, for TOPCon type modules under so-called BNPI (bifacial nameplate irradiance) test conditions.



## What does polycrystalline double-glass module mean



### [What is a double glass solar panel? , NenPower](#)

Aug 29, 2024 · Double glass solar panels feature a construction that includes glass on both the front and back sides, significantly bolstering their durability. This design protects sensitive ...

### [What are the advantages of dual-glass Dualsun modules?](#)

Nov 26, 2025 · The thickness of the front glass generally used for this type of structure is 3.2 mm. Dual-glass type modules (also called double glass or glass-glass) are made up of two glass ...



### [What are Double Glass Solar Panels?](#)

What Is The Distinction Between Single and Double Glass Solar Panels? What Are Double Glass Mono Perc Solar Panels? What Are Double Glass Solar Panel Advantages? Typically, solar panels have a front glass panel and a back plastic sheet. These single-sided glass panels are supported by frames across the entire construction. Manufacturers have developed double glass solar panels in recent years. Instead of a plastic back sheet, these panels have a second layer of glass on the back. The double glass solar pane See more on energytheory Maysun Solar

## Double glass solar module , Maysun Solar - Professional ...

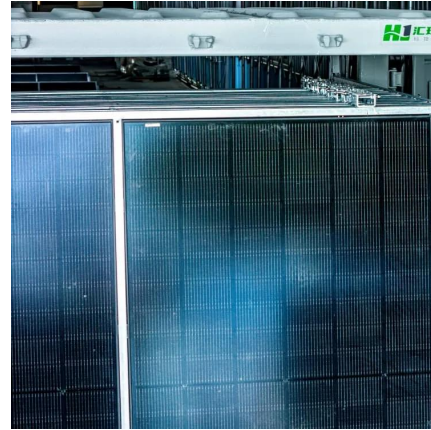
Efficient Double Glass Solar Modules High



durability, suitable for various climates, offering extended lifespan and excellent energy yields. Why Choose Double Glass Solar Modules? ...

### [Double the strengths, double the benefits](#)

Feb 21, 2025 · Superior protection; Environmental shielding: Double glass modules provide excellent defense against moisture, corrosion, and UV radiation, reducing the risk of potential ...



### [Single-glass versus double-glass: a deep dive into module ...](#)

Oct 2, 2024 · Left: a double-glass module; right, a bifacial single-glass module. The wave of industrial consolidation is growing ever more pronounced, shaping the landscape with each ...

### [What does polycrystalline double-glass module mean](#)

Polycrystalline sun-powered chargers, frequently alluded to as polycrystalline sun based modules, are a famous decision for outfitting sun-oriented energy. These boards are developed utilizing ...



### **The Difference Between Bifacial Module and Double Glass Bifacial Module**

Sep 4, 2023 · A double glass bifacial module is similar to a basic bifacial module but with a key difference: it has glass on both the front and back sides. This means that the entire module is ...



## Contact Us

---

For catalog requests, pricing, or partnerships, please visit:  
<https://www.woodgoods.pl>

**Scan QR Code for More Information**



<https://www.woodgoods.pl>