

# What does parallel connection of tool batteries mean





## Overview

---

What is parallel battery wiring?

Parallel battery wiring involves connecting multiple batteries so that all positive terminals are linked together, as well as all negative terminals. This configuration allows for an increase in total amp-hour capacity while maintaining the same voltage across the system.

What does it mean to connect batteries in series or parallel?

Let's get started. First, what exactly does it mean to connect batteries in series or parallel?

With a series connection, batteries link end-to-end by connecting the positive terminal of one to the negative terminal of the next battery. This increases the total system voltage, while maintaining the same capacity as an individual battery.

What happens if a battery is connected in parallel?

When batteries are connected in parallel, the overall capacity and current output of the battery bank increase, while the voltage remains constant. Each additional battery contributes to the total energy storage, effectively extending backup time within the same voltage system.

How does parallel wiring work?

Parallel wiring connects batteries side by side, linking all positive terminals together and all negative terminals together. This setup maintains voltage while increasing capacity. In parallel wiring, the total amp-hour (Ah) capacity adds up, but the voltage remains the same as a single battery. For example:



## What does parallel connection of tool batteries mean

---

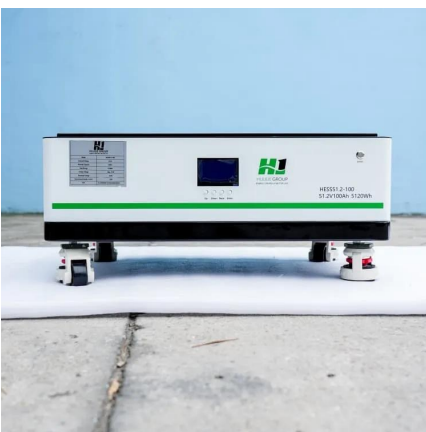


### [How to Calculate Parallel Resistance of Power Tool Batteries: ...](#)

Summary: Understanding parallel resistance in power tool batteries helps optimize performance, extend runtime, and prevent system failures. This guide explains the calculation process with ...

### [What Is Parallel Battery Wiring and How Does It Work?](#)

Jan 4, 2025 · How Does Parallel Battery Wiring Affect Voltage and Capacity? Connecting in parallel keeps voltage constant while summing the capacities (amp hours) of all batteries. ...

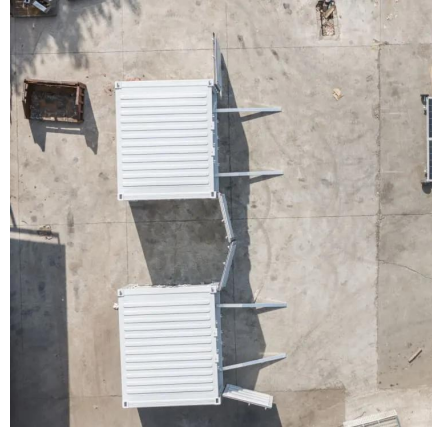


### [Comparing Series vs. Parallel Battery Configurations](#)

Feb 28, 2025 · Let's get started. Defining Series and Parallel Battery Connections First, what exactly does it mean to connect batteries in series or parallel? With a series connection, ...

### [Series vs Parallel Battery Wiring: Key Differences, Pros & Cons](#)

Apr 8, 2025 · When using multiple batteries in a project, you have two primary wiring configurations--series and parallel. Each has distinct advantages depending on your needs, ...



### [Paralleling batteries... Some do's, don'ts and hints...](#)

Sep 9, 2024 · The batteries should also be fully charged individually, and left to "settle" for 12+ hours before placing them in parallel. This helps reduce the chances of significant current flow ...

## Contact Us

---

For catalog requests, pricing, or partnerships, please visit:  
<https://www.woodgoods.pl>

**Scan QR Code for More Information**



<https://www.woodgoods.pl>