

# Up and down offset of double-glass components





## Overview

---

What is a glass partition system?

This glass partition system can accommodate single glass, double glass, even 3 glasses and Vacuum Insulated Glass (VIG), also called Double Glass Unit (DGU) too. The glass panels can be changed including their configuration of 1,2 or VIG / DGU glass, even after installation.

What is a double glazed insulating glass?

wide variety of insulating glass configurations satisfy a variety of performance and aesthetic requirements. A double-glazed IGU typically consists of two sheets of glass spaced apart, typically with a hollow aluminium frame that is sealed to both.

How to reduce the component resistance of a glass pane?

For individual glass panes of 2 mm thickness, the component resistance must be reduced by larger material partial safety factors, independent of the material. For laminated glass and laminated safety glass, the component resistance can be increased by 10% due to the higher redundancy.

What is a glass guideline?

This guideline is intended for all those who design, plan, advise, calculate, produce, process, finish, sell and install glass and glass components. The aim is to provide expert technical advice on glass products, to use them to the full in terms of technical potential and what is permitted by building regulations, and to verify their usability.



## Up and down offset of double-glass components

---

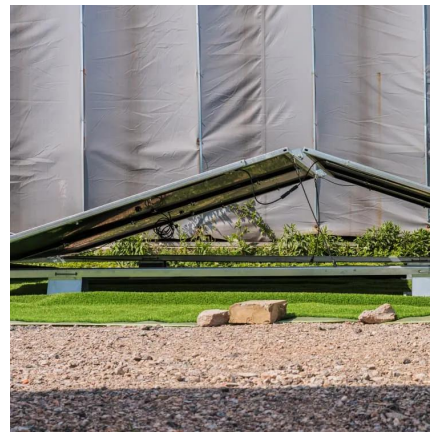


### [The BAM approach for the calculation of ...](#)

The latter can be achieved through the use of Insulating Glazing Units (IGUs), composed of glass panes held together by structural edge seals, entrapping a gas for thermal and acoustic insulation. Their ...

### [Double Glass Component Upper and Lower Glass Offset](#)

The double glass component upper and lower glass offset technique isn't just a trend--it's a necessity for modern sustainable design. By mitigating thermal stress and boosting energy ...



### [Double Glass Units simply supported on two sides: Analytical ...](#)

Insulating Glass Units (IGUs), made of multiple sealed glass panes with gas-filled cavities, are key to thermal and acoustic building insulation. As modern designs demand high ...



### [Interlocking cast glass components, Exploring ...](#)

This paper explores the potential of a novel, reversible all-glass system consisting of dry-

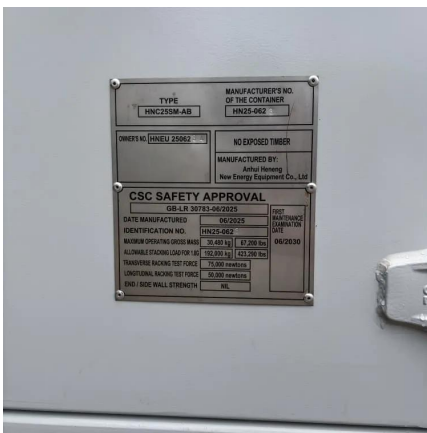


assembly, interlocking cast glass components. Owing to its interlocking geometry, the proposed system



### Interlocking cast glass components, Exploring a demountable ...

This paper explores the potential of a novel, reversible all-glass system consisting of dry-assembly, interlocking cast glass components. Owing to its interlocking geometry, the ...



### Guideline for Glass Design in accordance with DIN 18008

This guideline is intended for all those who design, plan, advise, calculate, produce, process, finish, sell and install glass and glass components. The aim is to provide expert ...



### The BAM approach for the calculation of double and triple ...

The latter can be achieved through the use of Insulating Glazing Units (IGUs), composed of glass panes held together by structural edge seals, entrapping a gas for thermal ...





## [Design and Performance Evaluation of Structural Double ...](#)

y off the structural properties of glass and the integration of glass components into the structural system. Characteristics of this technology include, highly crafted and exposed

...



## Contact Us

---

For catalog requests, pricing, or partnerships, please visit:  
<https://www.woodgoods.pl>

## Scan QR Code for More Information



<https://www.woodgoods.pl>