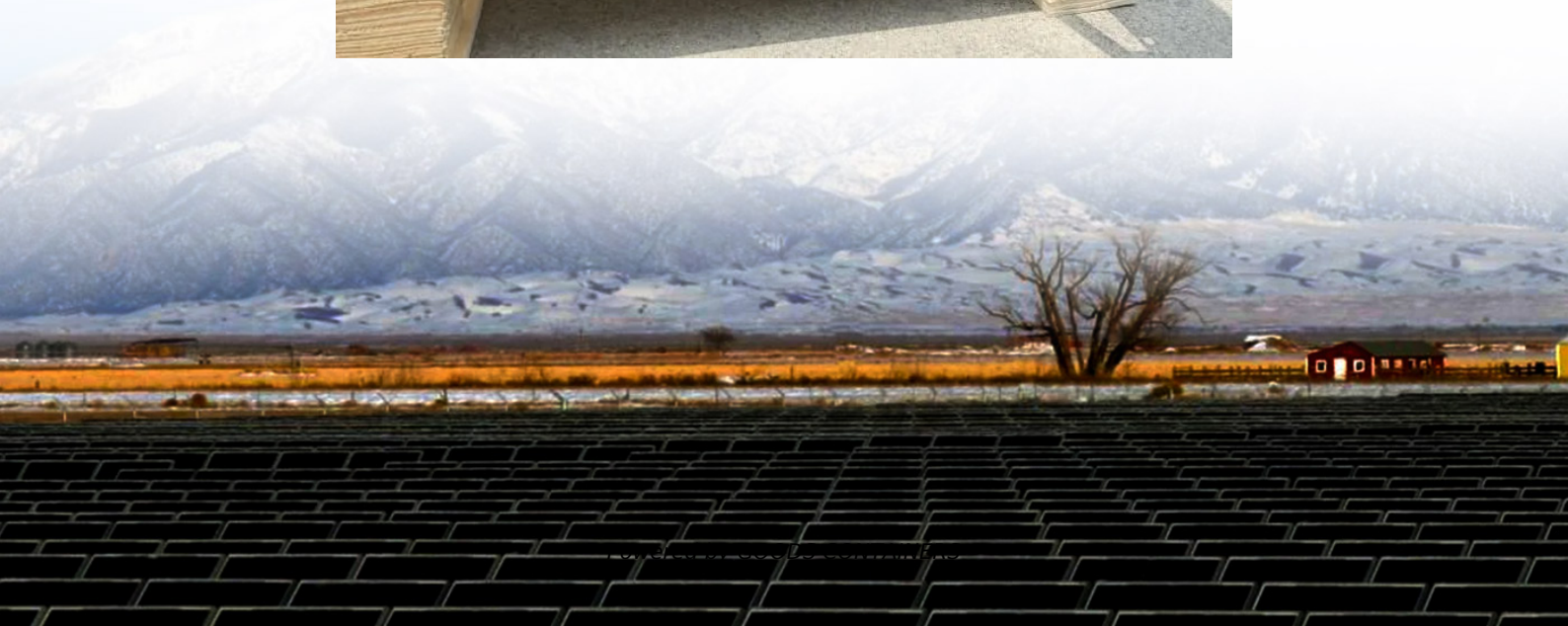


Uninterruptible power supply battery cabinet function





Overview

What is an uninterruptible power supply (UPS)?

An Uninterruptible Power Supply (UPS) is defined as a piece of electrical equipment which can be used as an immediate power source to the connected load when there is a failure in the main input power source. In a UPS, the energy is generally stored in flywheels, batteries, or super capacitors.

What is the difference between a UPS & energy storage?

UPS Definition: A UPS (Uninterruptible Power Supply) is defined as a device that provides immediate power during a main power failure. Energy Storage: UPS systems use batteries, flywheels, or supercapacitors to store energy for use during power interruptions.

What makes a UPS uninterruptible?

Of the three main subsystems, the battery is what makes the system “uninterruptible”. Depending upon the system design, the battery can constitute as much as 50% of the cost of the UPS. Without a reliable battery, the operation of the entire data center can be put at risk.

What is a battery in a power supply?

As the heart of any uninterruptible power supply (UPS) system, batteries provide emergency power to the connected load during a utility power failure, or when power anomalies cause fluctuations in the incoming power supply.



Uninterruptible power supply battery cabinet function

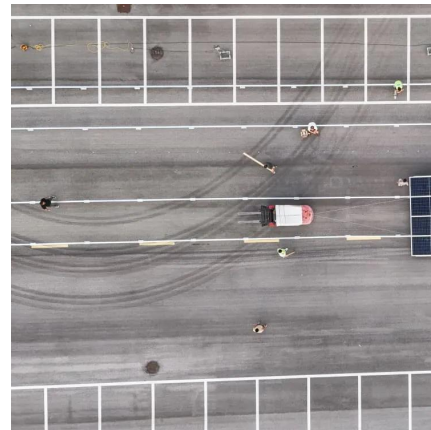


[Understanding The Main Components of Your UPS , Unified Power](#)

Sep 16, 2022 · What Are the Main Components of a UPS? As complex devices tasked with ensuring clean power and continuous uptime to your critical load, uninterruptible power ...

[Stationary Energy Storage , Battery Council International](#)

Dec 4, 2025 · Stationary Storage Solutions: UPS and BESS Two battery-based stationary energy storage solutions are helping meet the nation's growing energy demand: Uninterruptible Power ...



[What is the function of energy storage cabinet UPS , NenPower](#)

Aug 23, 2024 · Energy storage cabinets equipped with Uninterruptible Power Supply (UPS) systems serve several essential roles in ensuring the reliable operation of critical electrical ...



[Cabinet-type lithium battery as backup power supply and UPS](#)

Jan 13, 2025 · Cabinet-type lithium battery is an energy storage device or power supply device designed in the form of a cabinet with lithium-ion battery as the core. It is usually designed to ...



Breaking Down the Key Components of UPS Systems and Their Functions

May 30, 2025 · Discover the essential UPS components--batteries, rectifiers, inverters, bypass switches, and monitoring systems--that protect critical infrastructure from power outages. ...

[Basic Knowledge Regarding Uninterruptible Power ...](#)

Nov 21, 2018 · 1. Introduction UPS is the abbreviation for Uninterruptible Power Supply, and is a device which supplies power to devices for a fixed amount of time without stopping even when ...



Contact Us

For catalog requests, pricing, or partnerships, please visit:
<https://www.woodgoods.pl>



Scan QR Code for More Information



<https://www.woodgoods.pl>