

# The solar panel current is small





## Overview

---

What is a solar panel rated in Watts?

Some key points about current for solar panels: Short Circuit Current ( $I_{sc}$ ): The maximum current your panel can produce in perfect conditions. Maximum Power Current ( $I_{mp}$ ): The current at your panel's most efficient operating point. You'll notice that solar panels are rated in watts. That's a very basic combination of the voltage and current.

What is the difference between voltage and current for solar panels?

Maximum Power Voltage ( $V_{mp}$ ): This is the voltage at which your panel operates most efficiently. If voltage is pressure, current (measured in amps) is the flow rate. Voltage is how steep the river is, while current is how much water flows past you each second. Some key points about current for solar panels:.

How do I measure the short-circuit current of a solar panel?

Safety gloves and glasses to protect against electric shock. Follow these steps to accurately measure the short-circuit current of a solar panel: Select a Sunny Day: Ensure you are measuring  $I_{sc}$  on a bright, sunny day to get the most accurate reading. Set Up the Multimeter: Turn on the multimeter and set it to measure current (Amps).

What does voltage mean on a solar panel?

Voltage is like water pressure in a pipe. Just as too much water pressure can burst a pipe, too much voltage can damage your power station. Here's what you need to know about voltage for solar panels: Open Circuit Voltage ( $V_{oc}$ ): This is the maximum voltage your panel can produce, usually measured on a bright, cold morning.



## The solar panel current is small

---

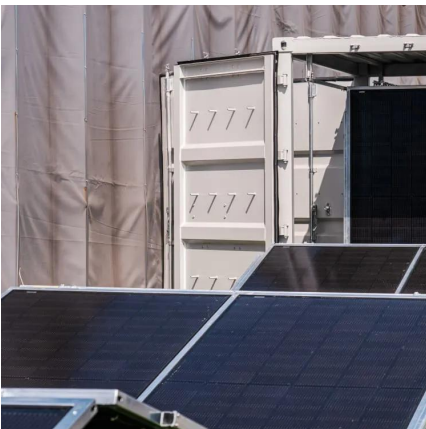


### [How To Measure Short Circuit Current Of A Solar Panel?](#)

Sep 3, 2024 · Measuring the short-circuit current (Isc) of a solar panel is a fundamental step in evaluating its performance and understanding its output capacity. This guide will explain the ...

### **What are the factors that affect the short circuit current of a solar panel**

Jul 5, 2025 · Okay, let's break down the factors that affect the short-circuit current (Isc) of a solar panel. Isc is the maximum current a solar panel can produce when the voltage across it is zero ...



### [What happens if the solar current is too low? . NenPower](#)

Feb 3, 2024 · The initial effect of low solar current is a substantial decrease in energy output from photovoltaic panels. When sunlight levels are inadequate, solar cells do not absorb sufficient ...

### [LTC4121 charging current is too small with solar panel](#)

Oct 16, 2019 · Hi, lu0026#39;ve designed a circuit using LTC4121-4.2. In the lab when using a bench power supply with around 18V and a series resistance of 47 Ohm, the battery charging ...



### [How to Measure Solar Panel Voltage and Current with a ...](#)

Aug 23, 2024 · Maximize your solar panel efficiency with our detailed guide on using a multimeter for testing voltage and current. Learn the critical steps for accurate measurements, essential ...

## Contact Us

---

For catalog requests, pricing, or partnerships, please visit:  
<https://www.woodgoods.pl>

**Scan QR Code for More Information**



<https://www.woodgoods.pl>