

The inverter turns back to a sine wave





Overview

What is a sine wave inverter?

Sine wave inverters, often referred to as “true” or “pure” sine wave inverters, are integral components in many modern power systems. They convert direct current (DC) energy, such as that sourced from solar panels or batteries, into alternating current (AC) energy, the type used in most residential and commercial settings.

What is a modified sine wave inverter?

Modified sine wave inverters use simpler and cheaper electronics to produce a wave that is not quite a smooth sine wave. Pure sine wave inverters use more expensive electronics to generate a wave that is very close to a pure sine wave. The figure below compares outputs from a modified sine wave inverter and a pure sine wave inverter.

Should you buy a pure sine wave inverter?

If yes, go for pure sine. Pure sine wave inverters come with smooth power output, device compatibility, and long-term safety which make them a must for serious setups—especially in solar, off-grid, or medical use cases. If you’re researching inverters for home backup or solar systems, you’ve probably come across the term “pure sine wave inverter.”.

How do I choose a sine wave inverter?

When selecting a sine wave inverter, it’s crucial to consider the power requirements of your appliances and the energy source. A power output rating that matches your total power requirement, coupled with the right input voltage for your DC source, will ensure a reliable and efficient system.



The inverter turns back to a sine wave

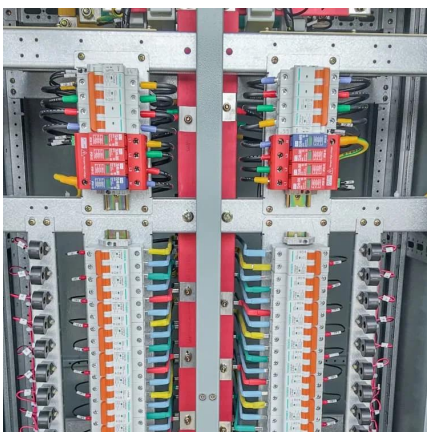


[What Is Pure Sine Wave Inverter And Why Do We Need It?](#)

Jun 18, 2025 · What Is a Pure Sine Wave Inverter? A pure sine wave inverter (PSW) transforms direct current (from batteries, solar panels, or car batteries) into alternating current with a ...

[What Is a Pure Sine Wave Inverter and How Does It Work?](#)

Jun 24, 2025 · A pure sine wave inverter is a specialty device that transforms direct current (DC) electricity from sources like batteries or solar panels into alternating current (AC) electricity, ...



[How Does a Pure Sine Wave Inverter Work? A ...](#)

4 days ago · A pure sine wave AC signal oscillates smoothly in a symmetrical, curved pattern, with voltage rising from 0 to a positive peak, falling back to 0, dropping to a negative peak, and ...

[How Does A Pure Sine Wave Inverter Work?](#)

Inverters in Renewable Energy
DC Power vs AC Power
Converting DC Power to AC Power
Sine Wave Inverters
Pure Sine Wave vs Modified Sine Wave Inverters
Modern Inverters For Solar Arrays
Power Quality
Conclusion
Changing DC current to sine wave AC current requires more



complex electronics. The figure below is a circuit diagram for a 'do-it-yourself' sine wave inverter. Sine wave inverters work in three stages: the oscillator stage, the booster or amplifier stage, and finally the transformer stage. The oscillator stage does what the title says it does: chan See more on todayshomeowner Electrical Academia

Inverter Types & Working Principle , Sine Wave, Square

...

2 days ago · The article provides an overview of inverter technology, explaining how inverters convert DC to AC power and detailing the different types of inverters--sine wave, square ...



[What Is a Pure Sine Wave Inverter? A Simple Explanation](#)

Apr 21, 2025 · The waveform it generates is a perfect sine curve, which is important because many sensitive devices (like medical equipment, modern TVs, and computers) need clean ...

[Inverter Types & Working Principle , Sine Wave, Square Wave...](#)

2 days ago · The article provides an overview of inverter technology, explaining how inverters convert DC to AC power and detailing the different types of inverters--sine wave, square ...



[Sine Wave Inverters - Electricity - Magnetism](#)

Oct 26, 2023 · A sine wave inverter operates by transforming a DC input into an AC output that closely mimics the pure sine wave of traditional power grid electricity. This smooth, ...



[? What is a Pure Sine Wave Inverter and Why Does it Matter?](#)

Jun 9, 2025 · Electricity that comes from the power grid is in the form of a sine wave--a smooth, repeating wave that maintains a consistent frequency (usually 50 or 60 Hz). A pure sine wave ...



Contact Us

For catalog requests, pricing, or partnerships, please visit:
<https://www.woodgoods.pl>

Scan QR Code for More Information



<https://www.woodgoods.pl>