

The function of base station power boost module





Overview

Can a base station power system model be improved?

An improved base station power system model is proposed in this paper, which takes into consideration the behavior of converters. And through this, a multi-faceted assessment criterion that considers both economic and ecological factors is established.

What is a base station power consumption model?

In recent years, many models for base station power consumption have been proposed in the literature. The work in proposed a widely used power consumption model, which explicitly shows the linear relationship between the power transmitted by the BS and its consumed power.

Why is a base station power amplifier important?

The proliferating frequency bands and modulation schemes of modern cellular networks make it increasingly important that base-station power amplifiers offer the right combination of output power, efficiency and multi-band support – at both peak and average power levels. PAs are the main energy consumers in modern base stations.

What is base station Power?

Base station power refers to the output power level of base stations, which is defined by specific maximum limits (24 dBm for Local Area base stations and 20 dBm for Home base stations) and includes tolerances for deviation from declared power levels, as well as specifications for total power control dynamic range. How useful is this definition?



The function of base station power boost module



[Improving RF Power Amplifier Efficiency in 5G Radio ...](#)

Base Station Efficiency Enhancement The proliferating frequency bands and modulation schemes of modern cellular networks make it increasingly important that base ...

[Power Consumption Modeling of 5G Multi-Carrier Base ...](#)

However, there is still a need to understand the power consumption behavior of state-of-the-art base station architectures, such as multi-carrier active antenna units (AAUs), ...



[The Unsung Hero of Telecom Energy: Why Base Station Power ...](#)

EverExceed's high-efficiency base station power solutions combine smart monitoring, energy optimization, and renewable integration to help operators reduce costs, ...

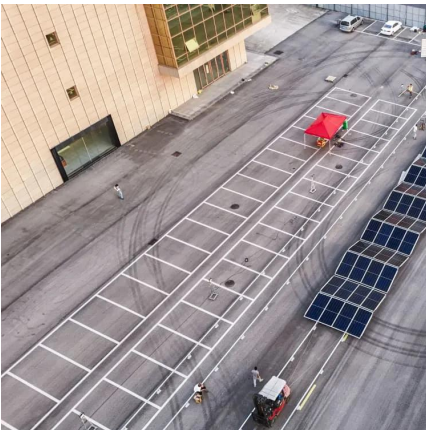
[A Power Consumption Model and Energy Saving Techniques ...](#)

Aiming at minimizing the base station (BS) energy consumption under low and medium load scenarios, the 3GPP recently completed a Release 18 study on energy saving ...



Improved Model of Base Station Power System for the ...

An improved base station power system model is proposed in this paper, which takes into consideration the behavior of converters. And through this, a multi-faceted ...



Power Management of Base Transceiver Stations for Mobile ...

A Base Transceiver Station (BTS) is a piece of equipment consisting of telecommunication devices and the air interface of the mobile network. It is referred to as the ...



Power Management of Base Transceiver ...

A Base Transceiver Station (BTS) is a piece of equipment consisting of telecommunication devices and the air interface of the mobile network. It is referred to as the BS in 3G networks, the eNB in





[An Efficient Radio Resource Management Algorithm for ...](#)

In this paper, a new radio resource management algorithm is proposed which aims the reduction of supply power consumption at the base station for multi-user MIMO-OFDM. The proposed ...



Contact Us

For catalog requests, pricing, or partnerships, please visit:
<https://www.woodgoods.pl>

Scan QR Code for More Information



<https://www.woodgoods.pl>