

The distance between the inverter and the battery is too far





Overview

How far away should a solar panel inverter be?

When considering the solar panel inverter distance, one of the first things to remember is how far your inverter and battery are from the main electrical panel. For example, placing your inverter and battery in a guest house 100 feet away from the main panel can affect your system's performance. Voltage Drop and Efficiency.

What is the ideal distance between solar panels and batteries?

The ideal distance between solar panels and batteries is up to 10 feet. This distance helps keep energy losses minimal, typically below 2%. Keeping your setup within this range ensures optimal efficiency in your solar energy system. Why is the distance important in a solar energy system?

.

How far should a solar panel inverter be from a guest house?

In conclusion, managing your solar panel inverter distance by storing the inverter and battery in a guest house and running the lines to the main panel over 100 feet is practical. This is true, provided the system is designed correctly.

Where should a solar inverter be mounted?

You can mount the inverter inside or outside the building near the meter box if your home is grid-tied. Overall, the solar panels and the inverter should be close, and the wiring to the house should not be more than 30 feet. 4. Do you Need an Inverter for Solar Power?

You do not always need an inverter to use solar power.



The distance between the inverter and the battery is too far

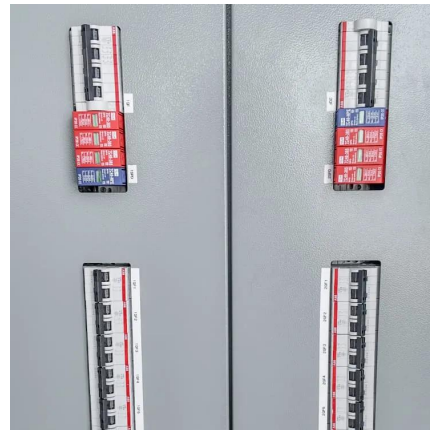


[How Far Can Solar Panels Be From Inverter](#)

Jul 11, 2023 · How Far Can Solar Panels Be From Inverter? Ideally, solar panels should be as close to the inverter and charge controller as possible. In situations where the panels are roof ...

[How Far Can Solar Panels Be from Battery and Other ...](#)

Sep 12, 2024 · It's crucial to take into account the distance between the solar panels and other system components, like the battery and inverter. As a general guideline, it's recommended to ...



[How Far Can Solar Panels Be From the Inverter?](#)

Jul 15, 2025 · Factors Affecting Distance: Cable Length and Size One of the primary concerns when assessing how far away solar panels can be from the inverter is the length and size of ...

[How far is the photovoltaic panel from the battery](#)

Jan 6, 2024 · How far should solar panels be from inverter? To minimize voltage drop, it is recommended to keep the distance within 30 feet (9 meters) between the solar panels and the ...



[Solar Panel Distance \(Battery + Charge Controller + ...](#)

What Is Power Loss?How Far Can Solar Panels Be from Battery?How Far Away Can Solar Panels Be from Inverter?Do You Need An Inverter For Solar Power?How Far Apart Should Solar Components be?How Far Can Solar Panels Be from A House?How Far Can You Run Solar Panels?How Far Apart Should Solar Panels be?Many solar arrays are installed on the roof of the house. That location puts the solar panels close to the controller, batteries, and inverter. Ideally, you do not want more than 20-30 feet of line between the solar array and the next solar component, whether a controller or a battery system. See more on solvoltaics DIY Solar Power Forum

How far from inverter can batteries be? - DIY Solar Power

...

Feb 6, 2023 · If you need to share battery storage between two systems, your best bet would be to find some way of AC coupling between the two inverters, and send the juice between them ...

[How Far Can Solar Panels Be from Battery to Maximize ...](#)

Dec 11, 2024 · Discover how the distance between solar panels and batteries affects the efficiency of your solar energy system. This



article offers essential guidelines for optimal ...



[How far from inverter can batteries be?](#)

Feb 6, 2023 · If you need to share battery storage between two systems, your best bet would be to find some way of AC coupling between the two inverters, and send the juice between them ...

[Solar Panel Inverter Distance: How Far Can They Be from...](#)

2 days ago · When considering the solar panel inverter distance, one of the first things to remember is how far your inverter and battery are from the main electrical panel.



[The distance between the inverter and the battery is too far](#)

About The distance between the inverter and the battery is too far video introduction Our solar industry solutions encompass a wide range of applications from residential rooftop installations ...



[Solar Panel Distance \(Battery + Charge Controller + Inverter...](#)

Sep 9, 2022 · 2. How Far Can Solar Panels Be from Battery? Generally, 20-30 feet is the ideal distance between a solar panel, such as an array, and the solar battery backup supply. The ...



Contact Us

For catalog requests, pricing, or partnerships, please visit:
<https://www.woodgoods.pl>

Scan QR Code for More Information



<https://www.woodgoods.pl>