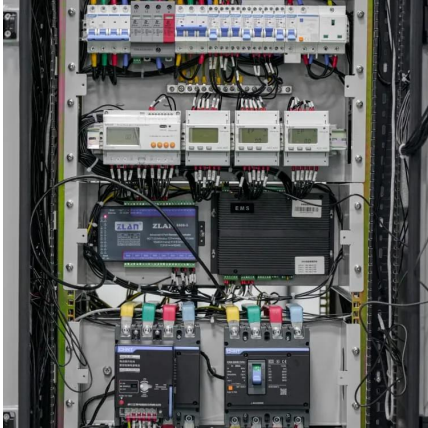


# **Superconducting solar container energy storage system device**





## Superconducting solar container energy storage system device



### [Superconducting nitridized-aluminum thin films](#)

Superconducting thin films with high kinetic inductance are key to produce high-impedance circuits with low losses, a very relevant feature required in high-coherence ...

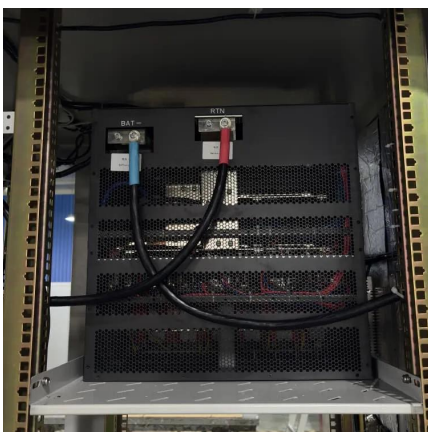
### [Review of the Research Status of Practical Superconducting ...](#)

Superconducting materials hold great potential in high field magnetic applications compared to traditional conductive materials. At present, practical superconducting materials include low ...



### [Waveguide integrated superconducting nanowire single ...](#)

The degree to which the superconducting state is disrupted depends on the density of broken Cooper pairs, as this determines the reduction in the local superconducting ...



### [Nanoscale NbN/TaN/NbN Josephson junctions for ...](#)

Superconducting flux memory devices fabricated with nanoscale junctions and high-inductance materials can maintain high-speed access performance while significantly ...



### [Superconducting in-memory computing architecture ...](#)

This marks the inaugural demonstration of a superconducting in-memory computing architecture through memristor coupling, offering a promising hardware platform for ...



### [Superconductor Science and Technology](#)

SUPPORTS OPEN ACCESS Superconductor Science and Technology is a truly multidisciplinary journal providing an essential forum for members of the superconductivity research community.



### [Progress of ultra-high-field superconducting magnets in China](#)

This paper reports the research status of UHF superconducting magnets in China from different perspectives, including design options, technical features, experimental ...





## Contact Us

---

For catalog requests, pricing, or partnerships, please visit:  
<https://www.woodgoods.pl>

### Scan QR Code for More Information



<https://www.woodgoods.pl>