

Standard solar module panels





Overview

What are the dimensions of standard solar panels?

Most solar panels are about 1.5 inches thick. The typical classification of solar panel sizes is based on the solar cell size, but it's not very useful for most calculations.

Why is solar panel size important?

Solar panel size is the key metric of every installation. A standard solar panel size (physical dimensions) of a panel determines how many solar cells it contains, which in turn affects how much power it can produce. Large commercial solar modules pack more cells, so they outrun smaller portable models on any solar panel size chart.

What are the dimensions of a 96-cell solar panel?

96-cell solar panel size. The dimensions of 96-cell solar panels are 41.5 inches long and 63 inches wide. That's a 41.5×63 solar panel.

How do you choose the optimum solar panel size?

By matching roof area, tilt, and daily load, people can identify the optimum solar panel size without any guesswork. Understanding solar panel size per kW turns empty terraces into tidy power stations, while clear steps on how to size a solar panel system keep budgets slim and performance steady.



Standard solar module panels



[Detailed Guide to Solar Panel Size](#)

Standard Solar Panel Dimensions The size of solar panels varies depending on the number of photovoltaic (PV) cells they include. Each cell adds to the panel's total voltage and power output. The most ...

Size of Solar Panels Explained: Residential and Commercial Standards

Introduction The size of solar panels and their dimensions are critical components in designing a solar energy system. It is essential to understand the physical characteristics of ...



[Standard Solar Panel Sizes And Wattages](#)

...
Rather, we get the typical sizes of solar panels by the number of cells (which is quite useless). There are 3 standardized sizes of solar panels, namely: 60-cell solar panels size. The dimensions of 60-cell solar panels ...

[Solar Panel Dimensions: Specifications, Power ...](#)

Analysis of solar panel dimensions and power classes, with reference sizes for 430W/550W/600W modules and corresponding roof area calculations to help select the most



suitable solar panels.



[standard solar photovoltaic panel sizes explained](#)

How heavy are these standard solar photovoltaic panels? A typical residential solar photovoltaic panel size (60-cell) usually weighs between 40 and 50 pounds, depending on the framing and ...

[Solar panel size: choosing the right dimensions](#)

Solar panels are equipped with photovoltaic cells, which convert solar energy into electricity. While these cells come in two standard sizes, most manufacturers use cells that are ...



[What Is Standard Solar Panel Size? A Comprehensive Overview](#)

Overview The standard solar panel size typically ranges from 65 inches by 39 inches for residential units, with most panels containing either 60 or 72 cells, which ...



[What Is Standard Solar Panel Size? A ...](#)

Overview The standard solar panel size typically ranges from 65 inches by 39 inches for residential units, with most panels containing either 60 or 72 cells, which significantly affects installation capacity and ...

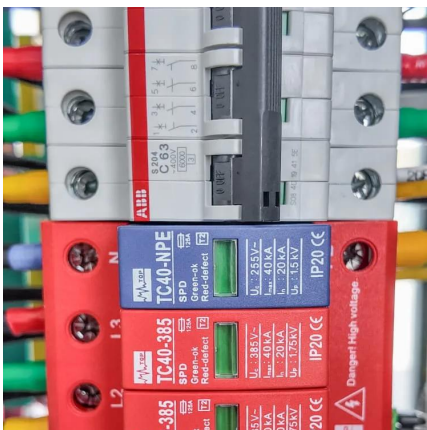
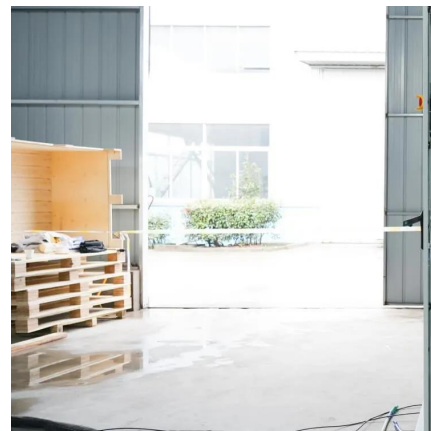


What are the Standard Sizes and Specifications for Residential Solar Panels

The most common residential panels today are based on the 60-cell and 66-cell format, with a strong trend towards larger 72-cell panels for more power-dense installations. Typically, you ...

[Detailed Guide to Solar Panel Size & Dimensions](#)

Standard Solar Panel Dimensions The size of solar panels varies depending on the number of photovoltaic (PV) cells they include. Each cell adds to the panel's total voltage ...



[Guide to Solar Panel Sizes & Dimensions \(October 2025\)](#)

Higher efficiency panels may require less space to produce the same amount of energy as lower efficiency panels. Sizes and wattages also depend on the types of panels and ...



[Solar Panel Size Guide , Best Panel Size for ...](#)

Solar panel size shapes everything from the watts to the ease of lifting a module onto a roof. The insights that follow weigh the gains and compromises of large versus compact panels, helping you choose a size ...



[Size of Solar Panels Explained: Residential and ...](#)

Introduction The size of solar panels and their dimensions are critical components in designing a solar energy system. It is essential to understand the physical characteristics of solar panels for both residential ...

[What are the Standard Sizes and ...](#)

The most common residential panels today are based on the 60-cell and 66-cell format, with a strong trend towards larger 72-cell panels for more power-dense installations. Typically, you can expect the length of a standard 60 ...



[Solar Panel Dimensions: Specifications, Power Classes, Roof ...](#)

Analysis of solar panel dimensions and power classes, with reference sizes for 430W/550W/600W modules and corresponding roof area calculations to help select the most ...



[Solar Panel Size Guide , Best Panel Size for Your Roof](#)

Solar panel size shapes everything from the watts to the ease of lifting a module onto a roof. The insights that follow weigh the gains and compromises of large versus compact ...

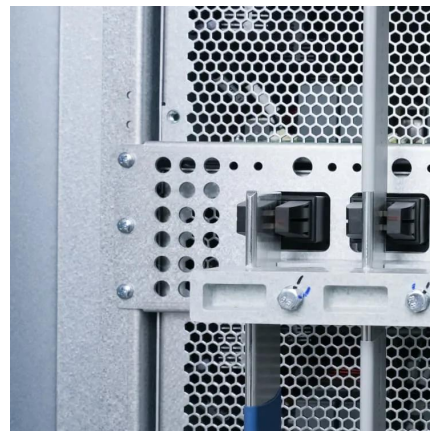


[Standard Solar Panel Sizes And Wattages \(100W-500W ...](#)

Rather, we get the typical sizes of solar panels by the number of cells (which is quite useless). There are 3 standardized sizes of solar panels, namely: 60-cell solar panels size. ...

[Solar panel size: choosing the right dimensions](#)

Solar panels are equipped with photovoltaic cells, which convert solar energy into electricity. While these cells come in two standard sizes, most manufacturers use cells that are 15.6 x 15.6 centimeters (6.14 ...



Contact Us

For catalog requests, pricing, or partnerships, please visit:
<https://www.woodgoods.pl>



Scan QR Code for More Information



<https://www.woodgoods.pl>