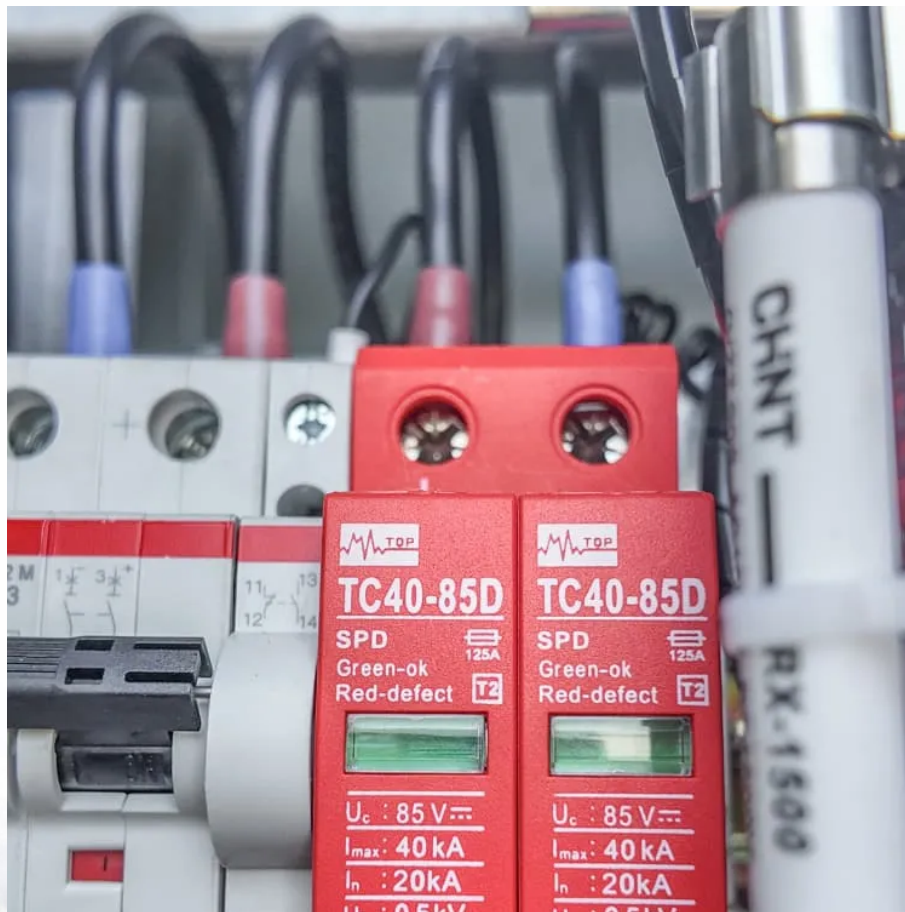


Solar power generation on the glass exterior wall of the building





Overview

What is a solar façade?

Solar façades are one of the cleverest ways to reduce the environmental impact of a building. BIPV helps designers to comply with building codes that specify the maximum primary energy consumption of the building or even the amount of renewable energy to be generated on-site by the building.

What is building-integrated photovoltaics (BIPV)?

Building-integrated photovoltaics (BIPV) is a multifunctional renewable energy technology that is progressively being applied to buildings . On the other hand, building greening system not only enhances the greenery coverage but also improves environmental quality and promotes carbon fixation through photosynthesis.

How do vertical solar panels work?

Beyond energy generation, vertical solar panels contribute to a building's thermal performance. Acting as a shield, they absorb and convert sunlight into electricity, while simultaneously reducing heat absorption by the building's walls.

What are vertical wall solar panels?

Urban areas, dense with high-rise buildings, often struggle with roof space scarcity, overshadowing, and architectural restrictions, leaving a vast potential for solar energy untapped. Enter vertical wall solar panels — a game-changing solution that transforms building facades into energy-producing assets. Thermal Benefits: Keeping Buildings Cool



Solar power generation on the glass exterior wall of the building



Wall-Mounted Wonders: The Role of Solar Panels in Transforming Building

Feb 12, 2024 · Explore the transformative power of vertical wall solar panels in urban architecture. Discover how these innovative installations address space constraints on rooftops, enhance ...

[Visual and energy optimization of semi-transparent ...](#)

Oct 1, 2025 · Integrating transparent photovoltaic cells into the glass curtain wall to convert solar energy to electrical energy is an effective way to realize the dual functions of power generation ...



[Investigating Factors Impacting Power Generation Efficiency ...](#)

Aug 25, 2024 · Photovoltaic double-skin glass is a low-carbon energy-saving curtain wall system that uses ventilation heat exchange and airflow regulation to reduce heat gain and generate a ...



[Facade Integrated Photovoltaics \(BIPV\): Harnessing Solar ...](#)

Jan 12, 2025 · In commercial buildings, BIPV systems are often used in the form of photovoltaic glass facades or solar panels incorporated into the building's exterior. These buildings typically ...



[BIPV Power Glass Facades Balancing Daylight and Energy ...](#)

Aug 11, 2025 · A 2024 Building Energy Research paper demonstrates how office blocks with optimized STPV facades achieve 32% higher daylight autonomy than conventional glazing, ...



[What does solar energy outside the building wall include?](#)

Jul 29, 2024 · Solar energy outside building walls encompasses various components and technologies designed to harness sunlight for power generation and heating purposes. 1. ...



[Facade Integrated Photovoltaics \(BIPV\): Harnessing Solar Energy ...](#)

Jan 12, 2025 · In commercial buildings, BIPV systems are often used in the form of photovoltaic glass facades or solar panels incorporated into the building's exterior. These buildings typically ...





[Fully exploiting solar energy with building envelopes: ...](#)

Apr 1, 2025 · An innovative adjustable photovoltaic green facade (APVGF) was proposed that combines an adjustable photovoltaic (PV) blind system with a green facade (GF), offering high ...



[SUSTAINABLE SOLUTIONS FOR ENERGY GENERATION BUILDING ...](#)

2 days ago · Solar façades are one of the cleverest ways to reduce the environmental impact of a building. BIPV helps designers to comply with building codes that specify the maximum ...

Contact Us

For catalog requests, pricing, or partnerships, please visit:
<https://www.woodgoods.pl>

Scan QR Code for More Information



<https://www.woodgoods.pl>