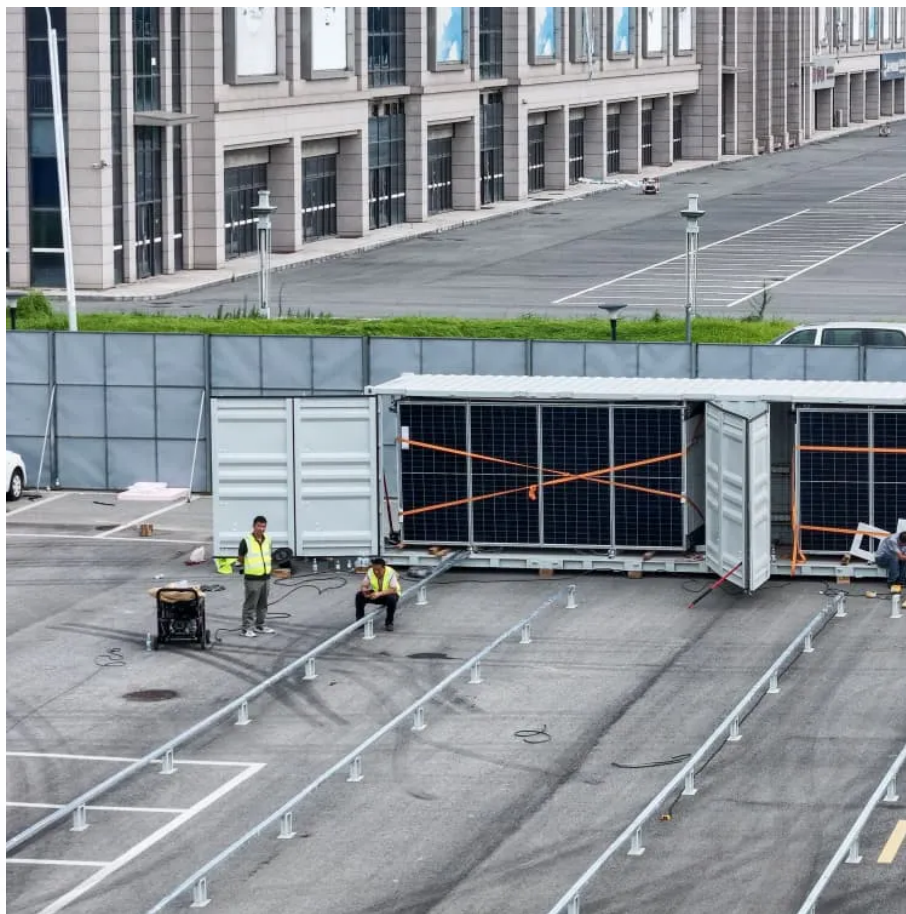


Solar panel size deviation





Overview

What are the dimensions of standard solar panels?

Most solar panels are about 1.5 inches thick. The typical classification of solar panel sizes is based on the solar cell size, but it's not very useful for most calculations.

What are the dimensions of a 96-cell solar panel?

96-cell solar panel size. The dimensions of 96-cell solar panels are 41.5 inches long and 63 inches wide. That's a 41.5×63 solar panel.

How deep is a solar panel?

The most common depth is 1.38 inches. Panel dimensions are influenced by wattage, cell technology, and panel design, which means sizes will always vary, even between panels with similar wattage or efficiency ratings. Understanding typical solar panel dimensions can help you plan your solar installation.

How big should a commercial solar panel be?

For commercial solar panel installations, panels often range from 400W to 600W, with dimensions of approximately 195 x 99 x 3.81 cm (6.40 x 3.25 x 0.13 feet). Several factors affect the size of a solar panel, including the type of solar cells used, the desired wattage output, your property's size and the panel's overall efficiency.



Solar panel size deviation



[Sampling guideline for inspection and testing of PV ...](#)

This sampling plan is a result of our expertise of handling a plus-3GW portfolio since 2012. The below mentioned sampling plan has been designed for electroluminescence (EL) testing, flash ...

[Practical Guide to Implementing Solar Panel MPPT ...](#)

Nov 29, 2012 · SOLAR PANEL MPPT The main problem solved by the MPPT algorithms is to automatically find the panel operating voltage that allows maximum power output. In a larger ...



[Solar Panel Sizes: Choosing the Right Dimensions for Any ...](#)

Jul 29, 2025 · Choosing the right solar panel size can make or break your system's performance. In this guide, we break down how to match your energy needs, roof space, and budget with ...



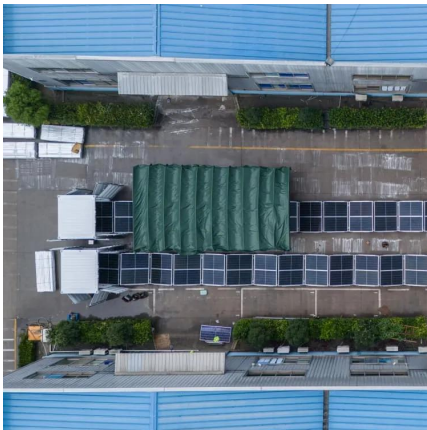
[Trends in performance factors of large photovoltaic solar ...](#)

Aug 1, 2020 · Due to the photovoltaic effect in semiconducting materials, photovoltaics (PV) solar panels convert sunlight into electricity. The coupling of a large number of solar panels in a ...



[Guide to Solar Panel Sizes & Dimensions \(October 2025\)](#)

May 23, 2025 · Solar panel size refers to the total amount of power a solar panel can generate over a period of time Solar panel dimensions refers to the physical size of a solar panel Solar ...



[Solar Panel Size & Dimensions Guide 2025, Complete Specs](#)

Oct 7, 2025 · Solar Panel Size Fundamentals
When discussing solar panels, the term "size" can be confusing because it refers to electrical capacity rather than physical dimensions. Solar ...



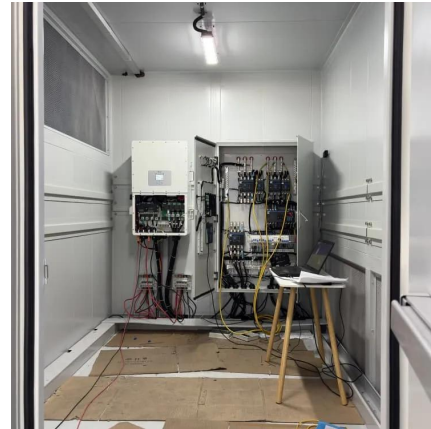
[Standard Solar Panel Sizes And Wattages \(100W-500W ...\)](#)

3 days ago · 72-cell solar panel size. The dimensions of 72-cell solar panels are as follows: 77 inches long, and 39 inches wide. That's a 77x39 solar panel; basically, a longer panel, mostly ...



[Solar Panel Dimensions: Sizes and What You Need to Know](#)

Feb 28, 2025 · Understanding solar panel dimensions is a system design for your energy needs that requires a discussion about panel sizes because it helps you achieve an efficient layout ...



[We Analyzed 100 Solar Panels: Dimensions, Efficiency, & Load](#)

Size and Power Output: Generally, larger solar panels have higher power output. This is because a larger surface area allows for more photovoltaic cells responsible for converting sunlight into ...

Contact Us

For catalog requests, pricing, or partnerships, please visit:
<https://www.woodgoods.pl>

Scan QR Code for More Information



<https://www.woodgoods.pl>