

# Solar panel 540w specifications and dimensions





## Overview

---

What are 540w solar panels?

This 540W solar panels is with 182mm half cut cells. The efficient cells produce more power over a long period of time, and high-efficiency modules have better performance and less degradation. According to your products quantity and requirement, we will choose Security and Economical transportation for you.

How many cells are in a 540 watt solar panel?

To give you an idea, a standard 540 watt solar panel is approximately 88 x 46 inches and tips the scales at around 72 pounds. Most modules with this output rating are monocrystalline and typically have at least 72 cells (144 half-cut cells). Efficiencies vary widely from brand to brand, but most monocrystalline options fall into 18–22% range.

What is 540w JA Solar panel?

The 540W JA solar panel is assembled with multi-busbar PERC cells, the half-cell configuration of the modules offers the advantages of higher power output, better temperature-dependent performance reduced shading effect on the solar panels, lower risk of hot spot, as well as enhanced tolerance for mechanical loading. Cell: Mono. Weight: 28.6kg±3%.

Can nine 540W solar panels run in series?

Whether you decide to run nine 540W panels in series or use series-parallel connections, the likelihood of voltage or current issues is unlikely. This is because the actual amps and volts are typically lower than the published values, and the Open Circuit Voltage (Voc) is a hard limit.



## Solar panel 540w specifications and dimensions

---

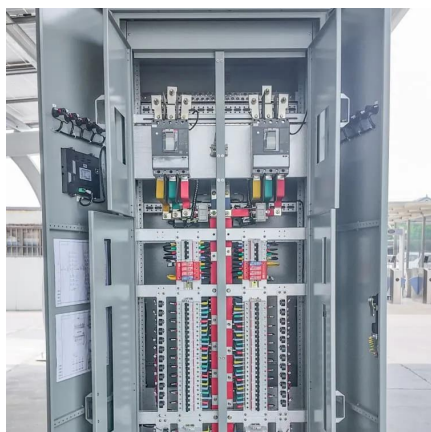


### [LONGi 540W Solar Panel 144 Cell Bifacial LR5-72HBD-540M ...](#)

Oct 2, 2025 · The solar cells of LR5-72HBD-540M are half the size of those found in standard panels. Major advantages include reduced power consumption, extended life and enhanced ...

### [540 Watt Solar panels for sale , Prices, dimensions, weight, ...](#)

4 days ago · 540 Watt Solar panels' range of prices, dimensions, sizes, voltage output, specifications datasheets Ranges of information Voltage: 31.1V ~ 66V Amp: 8.19A ~ 17.36A



### [Monocrystalline 540W photovoltaic panel specifications](#)

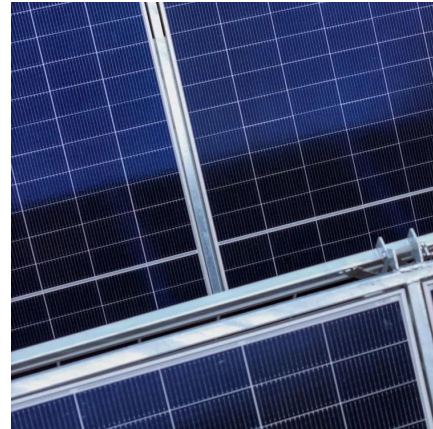
Sep 16, 2025 · Upgrade your energy system with our powerful 540W monocrystalline solar panel. Its high-quality construction and advanced technology make it an ideal choice for residential, ...

### [540W Solar Panels: Specifications, Efficiency, and Cost ...](#)

Oct 18, 2025 · Most 540W solar panels have 144 half-cut monocrystalline PERC cells. Some types use bifacial technology. This means they can



catch sunlight from both sides. This helps ...



[520 Watt Solar panels for sale , Prices, dimensions, weight, ...](#)

2 days ago · 520 Watt Solar panels' range of prices, dimensions, sizes, voltage output, specifications datasheets Ranges of information  
Voltage: 30.36V ~ 64.2V Amp: 8.11A ~ 17.13A

## Contact Us

---

For catalog requests, pricing, or partnerships, please visit:  
<https://www.woodgoods.pl>

**Scan QR Code for More Information**



<https://www.woodgoods.pl>