

Solar mid- and downstream components and inverters





Overview

How do solar inverters work?

At the center of this process are inverters, which take direct current (DC), produced by solar panels and transform it into the alternating current (AC) used within homes and for connection to the grid.

What are the different types of solar inverters?

Solar inverters come in various form factors: String/central inverters: Process multiple panel strings in parallel—commonly used in residential to utility-scale systems. Microinverters: One inverter per panel, offering per-module MPPT, higher shade tolerance, and modularity—but at a higher initial cost.

Which inverter is best for a grid-connected PV network?

Along with the PV string, the inverter is a critical component of a grid-connected PV framework. While two-level inverters are often utilized in practice, MLIs, particularly Cascaded H-Bridge (CHB) inverters, are one of the finest alternative options available for large-scale PV network in terms of cost and efficiency.

What is a mobile PV inverter?

mobile PV cell where the inverter is so integrated with the PV cell that the solar cell requires disassembly before recovery. 2) PV inverters convert and condition electrical power of a PV module to AC. The PV inverter is all the devices necessary to implement the PV inverter function.



Solar mid- and downstream components and inverters



[PHOTOVOLTAIC MODULES AND INVERTERS](#)

Mar 5, 2025 · The different inverter types available in the market are central inverters, string inverters, micro inverters, smart inverters and battery-based inverters. Central inverters are ...

[A Review on Inverter Technologies for Solar PV Power ...](#)

Jan 13, 2025 · These include central inverters mostly used in utility scale applications; string inverters used in mid-scale applications; multi-string inverters which are more modular and ...

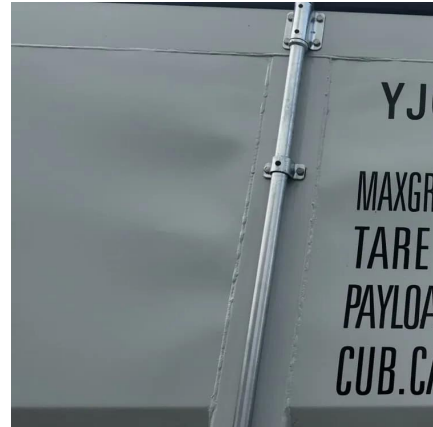


Understanding the Three Types of PV Inverters for Optimal Solar ...

Aug 19, 2025 · 1. String Inverters: These are the most common and cost-effective option, where multiple solar panels are connected in a series (a "string") to a single inverter. String inverters ...

[A review of different multi-level inverter topologies for grid](#)

Dec 1, 2022 · Along with the PV string, the inverter is a critical component of a grid-connected PV framework. While two-level inverters are often utilized in practice, MLIs, particularly Cascaded ...



Contact Us

For catalog requests, pricing, or partnerships, please visit:
<https://www.woodgoods.pl>

Scan QR Code for More Information



<https://www.woodgoods.pl>