

Solar container lithium battery pack charge and discharge termination voltage





Overview

CC/CV charge: 4.2V, 1C, +25°C. Discharge: CC, end voltage 3.0V, +25°C The graph below, shows typical discharge characteristics for a 850mAh Lithium Polymer cell at different temperatures. How do I choose a lithium-ion battery pack?

When selecting a lithium-ion battery pack, understanding its voltage characteristics is crucial for ensuring optimal performance and longevity. Three key voltage terms define a battery's operation: Nominal Voltage, Charged Voltage, and Cut-Off Voltage.

How does a lithium ion battery charge?

During charging, lithium-ion batteries exhibit distinct voltage characteristics that reflect their electrochemical processes. The charging cycle typically follows a constant current-constant voltage (CC-CV) protocol. Initially, the battery voltage rises steadily as current flows into the cell.

What is the discharge termination voltage of an NMC single cell lithium battery?

The discharge termination voltage of an NMC single-cell lithium battery is usually 3.0V, and the minimum can not be lower than 2.5V. The battery discharge time is related to the battery capacity and discharge current.

What does CC-CV stand for in battery charging?

The charging cycle typically follows a constant current-constant voltage (CC-CV) protocol. Initially, the battery voltage rises steadily as current flows into the cell. Once the voltage approaches the full charge threshold, the charging mode transitions to constant voltage, allowing the battery to absorb energy at a slower rate until fully charged.



Solar container lithium battery pack charge and discharge terminat

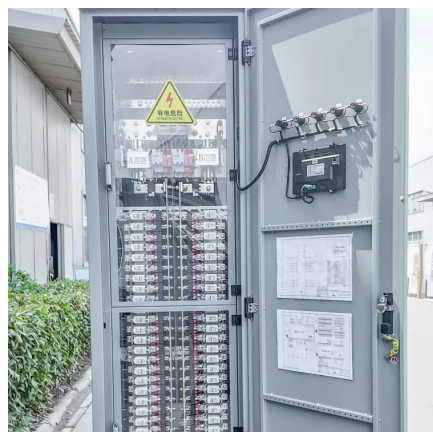


Comprehensive Guide to Lithium Battery Cell Voltage During Charging ...

May 21, 2025 · Understand lithium battery cell voltage during charging and discharging, including safe ranges, cutoff limits, and how voltage impacts performance and safety.

[What is the lithium battery discharge working principle?](#)

Dec 17, 2019 · The working principle of lithium battery discharge, what is the cut-off voltage? The termination voltage of lithium battery discharge means that after the lithium battery is ...

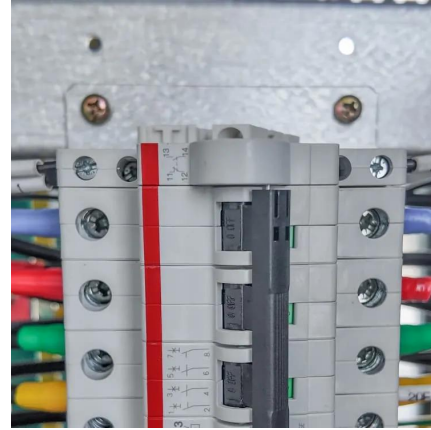


[Specification of 5MWh Battery Container System](#)

Jul 8, 2025 · The battery cell adopts the lithium iron phosphate battery for energy storage. At an ambient temperature of 25°C, the charge-discharge rate is 0.5P/0.5P, and the cycle life of the ...

[Lithium Ion Battery Charging And Discharging Tips](#)

Nov 5, 2019 · The discharge termination voltage of an NMC single-cell lithium battery is usually 3.0V, and the minimum can not be lower than 2.5V. The battery discharge time is related to ...



[Lithium Battery Voltage Chart: 3.2V, 3.7V, 4.2V Explained](#)

Jan 4, 2024 · What is a Battery Voltage Chart? A battery voltage chart is a critical tool for understanding how different lithium-ion batteries perform under specific conditions. It displays ...



[Battery Voltage Explained: Nominal, Charged, Minimum, and ...](#)

Feb 17, 2025 · When selecting a lithium-ion battery pack, understanding its voltage characteristics is crucial for ensuring optimal performance and longevity. Three key voltage terms define a ...



[Lithium battery charging and discharging principle](#)

During the charging phase, lithium ions move from the positive electrode (cathode) to the negative electrode (anode) within the battery cell. This process is reversible, allowing for multiple ...





Contact Us

For catalog requests, pricing, or partnerships, please visit:
<https://www.woodgoods.pl>

Scan QR Code for More Information



<https://www.woodgoods.pl>