

Single phase pem inverter





Overview

What is a bipolar PWM single-phase inverter?

A bipolar PWM single-phase inverter is a type of power electronic device used to convert DC (direct current) power into AC (alternating current) power with a single-phase output.

What is a single-phase inverter?

A single-phase inverter is a type of inverter that converts DC source voltage into single-phase AC output voltage at a desired voltage and frequency and it is used to generate AC Output waveform means converting DC Input to AC output through the process of switching.

What is a single phase PWM inverter?

Single-phase PWM inverters consist of two main parts, the DC power source and the inverter bridge, typically use a full-bridge configuration consisting of four power switches, usually IGBTs and MOSFETs. The switches are controlled in pairs, with diagonal pairs operation together.

What are the different types of PWM inverters?

PWM inverters can be broadly categorized into single-phase and three-phase types, each with distinct structures and applications. Single-phase PWM inverters consist of two main parts, the DC power source and the inverter bridge, typically use a full-bridge configuration consisting of four power switches, usually IGBTs and MOSFETs.



Single phase pem inverter

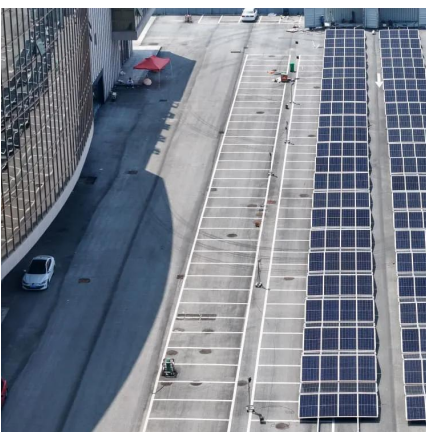


[PEM Fuel Cell Power Control with Single Phase Inverter ...](#)

Jul 21, 2022 · PEM Fuel Cell Power Control with Single Phase Inverter Connected To Distribution Grid Using Hysteresis Current Control Method
Abstract: In the application of a distributed ...

[Bipolar PWM Single Phase Inverter with RL Load](#)

Oct 27, 2024 · Introduction A bipolar PWM single-phase inverter is a type of power electronic device used to convert DC (direct current) power into AC (alternating current) power with a ...



[AN-CM-270 Design and Implementation of a Single ...](#)

Sep 30, 2025 · AN-CM-270 This application note explores the use of a GreenPAK IC in Power Electronics Applications. This app note will demonstrate the implementation of a single-phase ...

Design and simulation of single phase inverter using SPWM unipolar

This paper presents the design and simulation of single-phase inverter using sinusoidal pulse width modulation (SPWM) unipolar technique. The circuit has been designed and simulated ...



[Single-Phase Buck-Boost Inverter With Pulse Energy Modulation](#)

Oct 23, 2019 · The small-signal modeling analyses and results of PEM on the buck-boost inverter are compared with the commonly used sinusoidal pulsewidth modulation (SPWM), showing ...



[What is a PWM Inverter: Types and Applications](#)

Jul 15, 2024 · Explore what is PWM inverter, including single-phase and three-phase types. Learn more about the key advantages of PWM technology, like Hinen inverters are used for ...



[Improving voltage harmonic compensation of a single phase ...](#)

Mar 18, 2014 · The stand-alone power system under study consists of: 1) Proton-Exchange-Membrane (PEM) FC with unidirectional DC/DC converter, which converts the DC voltage ...





Contact Us

For catalog requests, pricing, or partnerships, please visit:
<https://www.woodgoods.pl>

Scan QR Code for More Information



<https://www.woodgoods.pl>