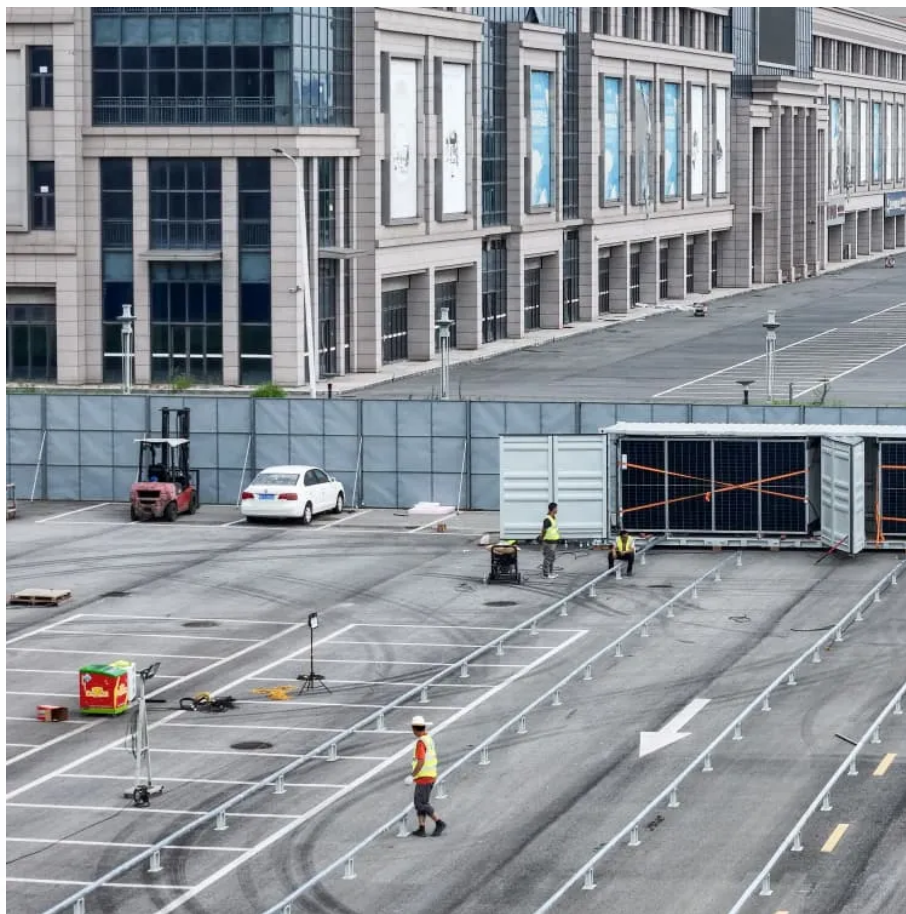


Single-phase inverter





Overview

What is a single-phase inverter?

A single-phase inverter is a type of inverter that converts DC source voltage into single-phase AC output voltage at a desired voltage and frequency and it is used to generate AC Output waveform means converting DC Input to AC output through the process of switching.

How does a single phase inverter work?

A single-phase inverter operates by converting a DC input, often sourced from a battery or a fuel cell, into an AC output. This is achieved through a process known as switching. The DC input is switched in a pattern that generates a pseudo-AC waveform, usually a square wave, modified sine wave, or pure sine wave.

What is the difference between a single phase and a three phase inverter?

Single-phase inverters convert DC input into single-phase output. The output consists of one phase (A- N, B- N, or C- N), formed by one live and one neutral conductor, with a standard voltage of 220 V — mainly for residential use. Three-phase inverters convert DC power into three-phase supply, generating three equally spaced AC phases.

What is a single phase string inverter?

Infineon provides semiconductor products for string inverters, like power transistors, gate drivers, current sensors, control, connectivity, and more. Single-phase string inverters perform DC to AC power conversion on series-connected PV panels. The inverter optimizes the solar energy yield through maximum power point tracking (MPPT).



Single-phase inverter



[Single Phase vs Three Phase Inverters: What's the Difference ...](#)

Jun 16, 2025 · Learn the key differences between single-phase and three-phase solar inverters, including power capacity, voltage, grid compatibility, and use cases. Choose the right inverter ...

[Single-Phase Inverter - Electricity - Magnetism](#)

Oct 26, 2023 · A single-phase inverter operates by converting a DC input, often sourced from a battery or a fuel cell, into an AC output. This is achieved through a process known as switching.



[What is a Single Phase Output Inverter?](#)

Dec 14, 2023 · A single phase output inverter is an electronic device that converts direct current (DC) power into alternating current (AC) power with a single sinusoidal waveform. In other ...

[Single Phase Inverter - Working, Circuit Diagram & Waveforms](#)

Jul 10, 2021 · In this topic, you study Single Phase Inverter - Working, Circuit Diagram & Waveforms. Single Phase Inverter is an electrical circuit, converts a fixed voltage DC to a fixed ...



Contact Us

For catalog requests, pricing, or partnerships, please visit:
<https://www.woodgoods.pl>

Scan QR Code for More Information



<https://www.woodgoods.pl>