

# Single-phase inverter design





## Overview

---

What is a single-phase inverter?

A single-phase inverter is a type of inverter that converts DC source voltage into single-phase AC output voltage at a desired voltage and frequency and it is used to generate AC Output waveform means converting DC Input to AC output through the process of switching.

What is a single phase inverter circuit?

Single-phase inverter circuits are divided into three main divisions which are the inverter part that consists of the MOSFET switch, the control circuit which generates switching pulses generated through the microcontroller and filter parts that contain inductors, capacitors and resistors to reduce harmonic.

What is a single phase full bridge inverter?

The power circuit of a single phase full bridge inverter is constructed with precision, featuring four thyristors labeled T1 to T4 , four diodes D1 to D4 and a two wire DC input power source denoted as  $V_s$  .

How do I import a single phase inverter?

Select Single Phase Inverter: Voltage Source from the list of solutions presented. The development kit and designs page appear. Use this page to browse all the information on the design including this user guide, test reports, and hardware design files. Click on Import <device name>Project. The project imports into the workspace environment.



## Single-phase inverter design

---



### [How to Design and Implement a Single-phase ...](#)

How to Design and Implement a Single-phase Inverter: This Instructable explores the use of Dialog's GreenPAK(TM) CMICs in power electronics applications and will demonstrate the implementation of a single-phase ...

### [TIDM-HV-1PH-DCAC reference design . II](#)

This reference design implements single-phase inverter (DC-AC) control using the C2000(TM) F2837xD and F28004x microcontrollers. Design supports two modes of operation for the ...



### [How to Design and Implement a Single-phase Inverter](#)

How to Design and Implement a Single-phase Inverter: This Instructable explores the use of Dialog's GreenPAK(TM) CMICs in power electronics applications and will demonstrate the ...



### [Voltage Source Inverter Reference Design \(Rev. E\)](#)

Description This reference design implements single-phase inverter (DC/AC) control using a C2000TM microcontroller (MCU). The design supports two modes of operation ...



### [AN-CM-270 Design and Implementation of a Single ...](#)

AN-CM-270 This application note explores the use of a GreenPAK IC in Power Electronics Applications. This app note will demonstrate the implementation of a single-phase ...



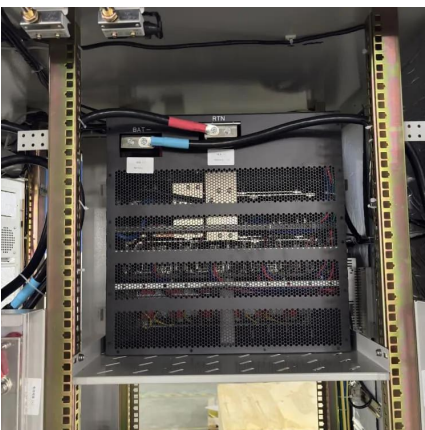
### **Design and simulation of single phase inverter using SPWM unipolar**

This paper presents the design and simulation of single-phase inverter using sinusoidal pulse width modulation (SPWM) unipolar technique. The circuit has been designed and simulated ...



### [Single-Phase Voltage Source Inverter \(VSI\)](#)

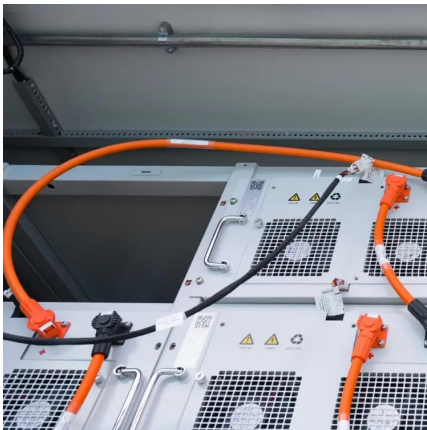
1. Introduction pplied to design a generic control system. In this case, a single-phase voltage-source inverter will serve as an example to demonstrate the SmartCtrl capabi ...





## Reference Design For Single-Phase Inverter

The reference design utilises a C2000 microcontroller (MCU) to control a single-phase inverter (DC/AC). It offers dual operational modes for the inverter. One is the voltage source mode with an output Inductor ...



## Reference Design For Single-Phase Inverter

The reference design utilises a C2000 microcontroller (MCU) to control a single-phase inverter (DC/AC). It offers dual operational modes for the inverter. One is the voltage ...

## Contact Us

---

For catalog requests, pricing, or partnerships, please visit:  
<https://www.woodgoods.pl>

**Scan QR Code for More Information**



<https://www.woodgoods.pl>