

Rome s reliable energy storage container integrated system





Overview

What is energy storage container?

SCU uses standard battery modules, PCS modules, BMS, EMS, and other systems to form standard containers to build large-scale grid-side energy storage projects.

What is a containerized energy storage system?

The containerized energy storage system offers grid services such as peak shaving, load shifting, and frequency regulation. The modular nature of BESS containers allows for flexible capacity expansion and easy installation at commercial and industrial sites. How Does the Containerized BESS System Work?

.

What is a battery energy storage system?

Battery Energy Storage Systems (BESS) play a pivotal role in stabilizing energy grids, enhancing renewable energy integration, and ensuring reliable power supply. At TLS, we specialize in manufacturing state-of-the-art, fully-integrated BESS containers that set new benchmarks in efficiency, safety, and scalability.

What are fully integrated Bess containers?

What Are Fully-Integrated BESS Containers?

A fully-integrated BESS container is a modular energy storage unit housed within a robust, weatherproof container. These systems come pre-assembled with all necessary components, including batteries, inverters, HVAC systems, fire suppression systems, and monitoring equipment.



Rome s reliable energy storage container integrated system

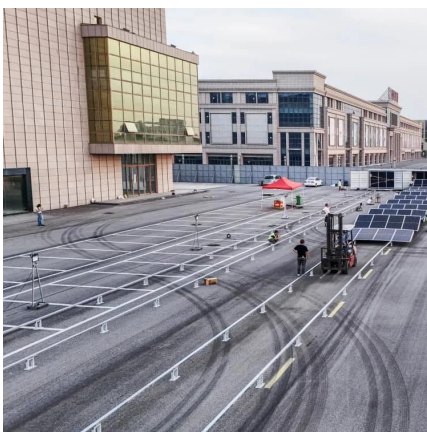
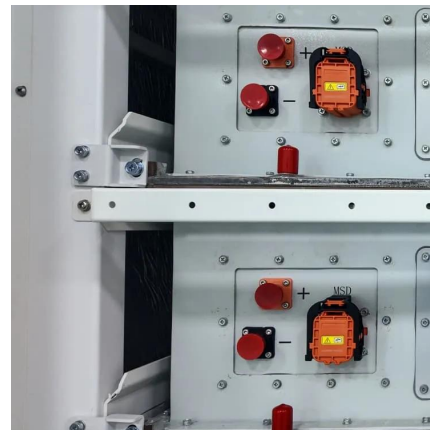


Revolutionizing Energy Storage: Fully-Integrated BESS Containers ...

Jan 3, 2025 · The global shift towards renewable energy demands innovative solutions for energy storage and management. Battery Energy Storage Systems (BESS) play a pivotal role in ...

[Battery storage project pipeline in Romania in rapid expansion](#)

Aug 16, 2025 · The battery energy storage system project is for 20 MW in operating power and 80 MWh. It would consist of 16 containers, 192 inverters and four transformer units. The wind park ...



Rome's Fiumicino Airport Unveils Europe's Largest EV Battery Energy

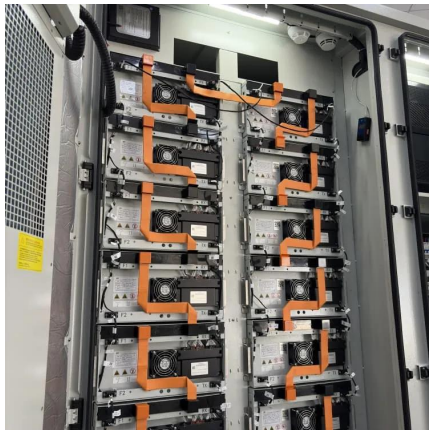
Jun 4, 2025 · 10 MWh energy storage system repurposes 762 end-of-life EV batteries, supporting peak power needs and decarbonization. Expected CO₂ reduction of 16,000 tons over the next ...

[Energy Storage for Rome-Fiumicino Airport, Italy . Mercedes ...](#)

Dec 1, 2025 · The whole 10 MWh BESS (Battery Energy Storage System) is fully integrated with "Solar Farm", the largest self-consumption



photovoltaic system in a European airport, ...



[Enel and Rome Fiumicino Airport Launch Italy's Largest ...](#)

Jun 6, 2025 · The stationary battery energy storage system (BESS), with a total capacity of 10 megawatt-hours (MWh), has been installed at Fiumicino International Airport and integrates ...

[The PIONEER Project: A Milestone in Circular Energy Storage](#)

Jul 16, 2025 · Technical challenges The PIONEER BESS utilizes a total of 762 repurposed battery packs from used electric vehicles, forming a 10 MWh storage system integrated with the ...



Contact Us

For catalog requests, pricing, or partnerships, please visit:
<https://www.woodgoods.pl>



Scan QR Code for More Information



<https://www.woodgoods.pl>