

# **Nepal power signal tower base station**





## Nepal power signal tower base station

---

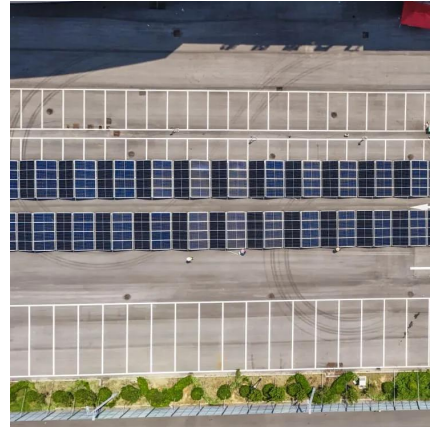


### **Nepal Telecom enhances 4G services with installation of 5 BTS towers ...**

Those five cell towers aka base stations are set up in Baspokharai of Ghorahi, Tamase in Tulsipur, Chiraghat and Baghmare in Shantinagar, and Simthana in Dangisharan ...

### **Nepal's communication base station adopts Huatong's solar power ...**

Huatong Yuantong (HT SOLAR POWER) and Nepal Telecom reached a strategic cooperation intention, and successively developed a communication base station solar power ...



### [NTA approves construction of 943 towers for ...](#)

KATHMANDU: The Nepal Telecommunications Authority (NTA) has granted long-awaited approval for the construction of 943 new Base Transceiver Station (BTS) towers to two major telecom service ...

### [Energy Demand Analysis of Telecom Towers ...](#)

Base Transceiver Stations are the most energy intensive part of cellular network architecture and contribute up to 60 to 80% of total cellular power consumption and varies in response to the



real



### Final Energy Demand (Sectorwise) of Telecom ...

Telecom towers, technically known as BTS (Base Transceiver Stations) are the most energy intensive part of cellular network architecture and contribute up to 60 to 80% of total cellular power



### Final Energy Demand (Sectorwise) of Telecom Towers of Nepal ...

Telecom towers, technically known as BTS (Base Transceiver Stations) are the most energy intensive part of cellular network architecture and contribute up to 60 to 80% of total cellular ...



### NT installing 160 BTS in rural areas

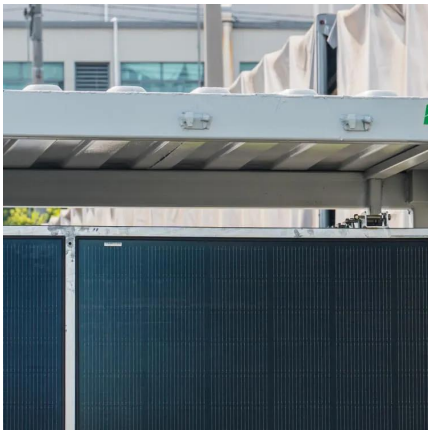
KATHMANDU, June 10: Nepal Telecom (NT) is rapidly installing base transceiver station (BTS) towers in different rural parts of the country with the aim of providing quality telecommunications services to ...





## [NTA approves construction of 943 towers for Ncell and Nepal ...](#)

KATHMANDU: The Nepal Telecommunications Authority (NTA) has granted long-awaited approval for the construction of 943 new Base Transceiver Station (BTS) towers to ...

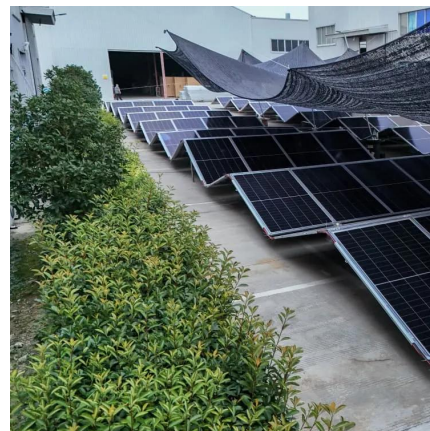


## [Energy Demand Analysis of Telecom Towers of Nepal ...](#)

Abstract: Telecom towers, technically known as BTS (Base Transceiver Stations) are the most energy intensive part of cellular network architecture and contribute up to 60 to ...

## [Energy Demand Analysis of Telecom Towers of Nepal](#)

Base Transceiver Stations are the most energy intensive part of cellular network architecture and contribute up to 60 to 80% of total cellular power consumption and varies in ...



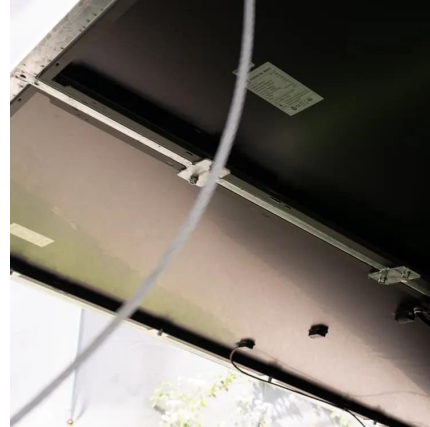
## [Nepal Telecom enhances 4G services with ...](#)

Those five cell towers aka base stations are set up in Baspokharai of Ghorahi, Tamase in Tulsipur, Chiraghat and Baghmare in Shantinagar, and Simthana in Dangisharan inside Dang. After these ...



### [Nepal's communication base station adopts ...](#)

Huatong Yuantong (HT SOLAR POWER) and Nepal Telecom reached a strategic cooperation intention, and successively developed a communication base station solar power supply system solution for the ...



## Contact Us

---

For catalog requests, pricing, or partnerships, please visit:  
<https://www.woodgoods.pl>

### Scan QR Code for More Information



<https://www.woodgoods.pl>