

Maputo double-glass solar modules





Overview

What is a double glass solar module?

In the ever-evolving world of photovoltaic technology, double glass solar modules are emerging as a game-changer. By encapsulating solar cells between two layers of glass, these modules offer unparalleled durability and efficiency. But what exactly sets them apart?

What are double glass solar modules?

.

What is a double glass module?

In contrast, double glass modules replace the polymer layer with another glass sheet, creating a robust sandwich structure. At IBC SOLAR, we use 2,0 mm x 2,0 mm glass layers, whereas some other market offerings use thinner 1,6 mm x 1,6 mm layers. This ensures greater durability and longevity.

Why are double glass modules symmetrical?

Mechanical constraints on cells: the fact that the structure of the double glass modules is symmetrical implies that the cells are located on a so-called neutral line, the upper part of the module being in compression during a downward mechanical load and the lower glass surface being in tension.

Why are double glass solar panels bifacial?

Thermal stability: The identical thermal expansion coefficients of the glass layers minimize stress on solar cells during temperature fluctuations. Dual-sided energy Capture: Many double glass modules are bifacial, allowing them to harness sunlight from both sides.



Maputo double-glass solar modules

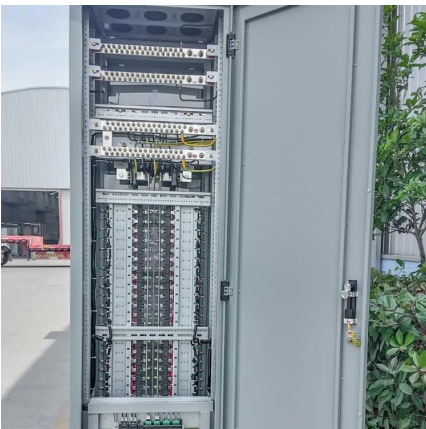


[Supply Double Transparent Monofacial Glass PV Module Solar ...](#)

Double glass PV modules offer enhanced durability and performance, making them suitable for long-term installations. Transparent PV modules provide aesthetic integration and versatility, ...

[Double the strengths, double the benefits](#)

Feb 21, 2025 · In the ever-evolving world of photovoltaic technology, double glass solar modules are emerging as a game-changer. By encapsulating solar cells between two layers of glass, ...



Double Glass Transparent Module, Double Glass Bifacial Module, Solar

Our products, such as Double Glass Transparent Module, Double Glass Bifacial Module, break through the limits of traditional solar modules, to deliver high-performance, safe, and efficiency ...

[What are the advantages of dual-glass Dualsun modules?](#)

Nov 26, 2025 · The thickness of the front glass generally used for this type of structure is 3.2 mm. Dual-glass type modules (also called double glass or glass-glass) are made up of two glass ...



Contact Us

For catalog requests, pricing, or partnerships, please visit:
<https://www.woodgoods.pl>

Scan QR Code for More Information



<https://www.woodgoods.pl>