

Main static losses of flywheel energy storage





Overview

What causes standby losses in a flywheel energy storage system?

Aerodynamic drag and bearing friction are the main sources of standby losses in the flywheel rotor part of a flywheel energy storage system (FESS). Although these losses are typically small in a well-designed system, the energy losses can become significant due to the continuous operation of the flywheel over time.

Does a flywheel energy storage system affect the environment?

Flywheel energy storage system use is increasing, which has encouraged research in design improvement, performance optimization, and cost analysis. However, the system's environmental impacts for utility applications have not been widely studied.

What are the components of a flywheel energy storage system?

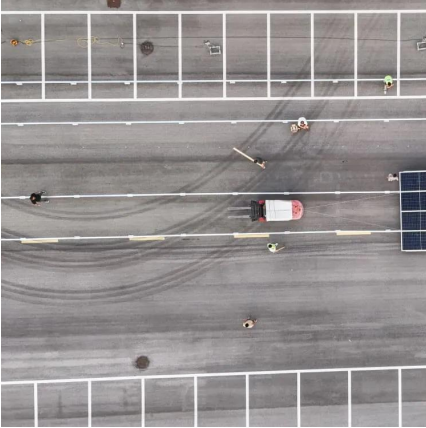
The main components of a flywheel energy storage system are a rotor, an electrical motor/generator, bearings, a PCS (bi-directional converter), a vacuum pump, and a vacuum chamber . During charging, the rotor is accelerated to a high speed using the electrical motor.

Can kinetic/flywheel energy storage systems improve energy capacity?

Analysis and optimization of a novel energy storage flywheel for improved energy capacity. Kinetic/Flywheel energy storage systems (FESS) have re-emerged as a vital technology in many areas such as smart grid, renewable energy, electric vehicle, and high-power applications.



Main static losses of flywheel energy storage



[Main Static Losses of Flywheel Energy Storage: Causes and ...](#)

Why Flywheel Energy Storage Isn't Perfect (And How We're Fixing It) You know, flywheel energy storage sounds like the perfect solution for renewable energy systems - instant response ...

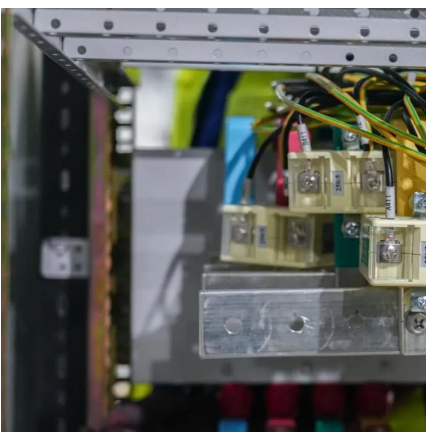
[Main static losses of flywheel energy storage](#)

What causes standby losses in a flywheel energy storage system? Aerodynamic drag and bearing friction are the main sources of standby losses in the flywheel rotor part of a flywheel energy ...



[Energy and environmental footprints of flywheels for utility ...](#)

The net energy ratio is a ratio of total energy output to the total non-renewable energy input over the life cycle of a system. Steel rotor and composite rotor flywheel energy ...



City Research Online

Aerodynamic drag and bearing friction are the main sources of standby losses in the flywheel rotor part of a flywheel energy storage system



(FESS). Although these losses are typically small in ...



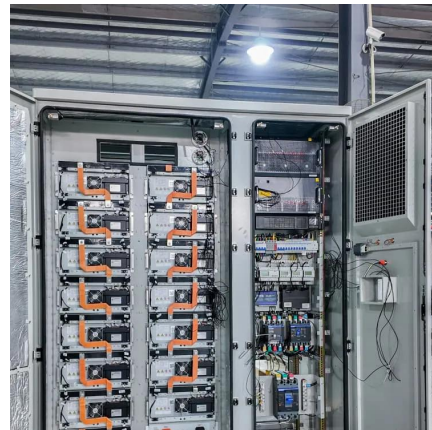
[Analysis of Standby Losses and Charging](#)

...

Aerodynamic drag and bearing friction are the main sources of standby losses in the flywheel rotor part of a flywheel energy storage system (FESS). Although these losses are typically small in a well ...

[Analysis of Standby Losses and Charging Cycles in ...](#)

Abstract: Aerodynamic drag and bearing friction are the main sources of standby losses in the flywheel rotor part of a flywheel energy storage system (FESS). Although these ...



[Flywheel Energy Storage Static Loss: What You Need to Know](#)

Imagine leaving your car engine running overnight - flywheel energy storage static loss works similarly. Even when not actively charging or discharging, these systems lose ...



Experimental Analysis of Motor Power Losses in Energy Storage Flywheel

Energy storage flywheel plays a crucial role in power compensation within modern power systems. The motor losses affect the performance of the energy storage flywheel. A ...



Analysis of Standby Losses and Charging Cycles in Flywheel Energy

Aerodynamic drag and bearing friction are the main sources of standby losses in the flywheel rotor part of a flywheel energy storage system (FESS). Although these losses are ...

Contact Us

For catalog requests, pricing, or partnerships, please visit:
<https://www.woodgoods.pl>

Scan QR Code for More Information



<https://www.woodgoods.pl>