

Main functions of Nairobi BMS battery management system





Overview

What is battery management system (BMS)?

Battery Management System (BMS) is the “intelligent manager” of modern battery packs, widely used in fields such as electric vehicles, energy storage stations, and consumer electronics.

How do battery management systems work?

Battery management system (BMS) is technology dedicated to the oversight of a battery pack, which is an assembly of battery cells, electrically organized in a row x column matrix configuration to enable delivery of targeted range of voltage and current for a duration of time against expected load scenarios.

Why is BMS technology important?

This sophisticated technology acts as the brain of modern battery systems, protecting against dangerous conditions like overcharging, overheating, and cell imbalances. From electric vehicles to renewable energy storage systems, BMS technology has become essential for safely harnessing the power of advanced battery chemistries.

How do battery management systems protect batteries from dangerous conditions?

Battery management systems are the critical intelligence behind modern battery technologies, especially when you have lithium-ion chemistries that just need constant monitoring for safety. In this piece, we got into how BMS technology protects batteries from dangerous conditions while optimizing their performance and extending their lifespan.



Main functions of Nairobi BMS battery management system



Understanding battery management systems: Key components and functions

May 16, 2024 · Understanding battery management systems: Key components and functions Here's what you need to know about fuses, sensors, controllers and all the other building ...

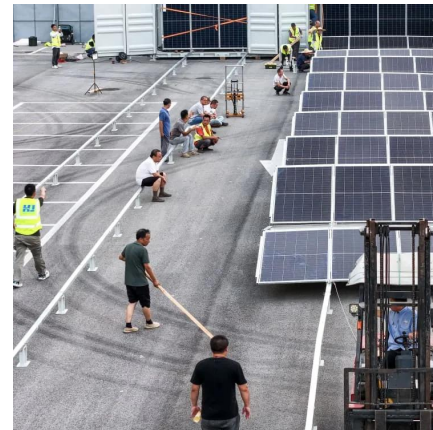


[What is a Battery Management System \(BMS\)? Essential ...](#)

May 5, 2025 · What are the main functions of a Battery Management System (BMS)? A Battery Management System monitors voltage, current, and temperature of battery cells, calculates ...

[Battery Management System \(BMS\) Detailed Explanation: ...](#)

May 7, 2025 · Battery Management System (BMS) is the "intelligent manager" of modern battery packs, widely used in fields such as electric vehicles, energy storage stations, and consumer ...



[Battery Management System Working Principle Explained](#)

Jun 27, 2025 · Battery Management System Working Principle and Its Role in Safe Battery Use Smarter battery monitoring solutions are critical as the demand for lithium-ion batteries rises ...



[Basic functions of battery management system \(BMS\)](#)

Jun 11, 2024 · The main functions of the battery management system (BMS) include: real-time monitoring of battery physical parameters, battery status estimation, online diagnosis and early ...



[What is a Battery Management System \(BMS\)? - How it ...](#)

1 day ago · Battery management system (BMS) is technology dedicated to the oversight of a battery pack, which is an assembly of battery cells, electrically organized in a row x column ...



[What Is a BMS? A Complete Guide to the Basic Functions ...](#)

Apr 3, 2025 · BMS (Battery Management System) is an integrated hardware-software system designed to monitor, protect, manage, and optimize the operation of rechargeable ...





[What is a Battery Management System? Complete Guide to BMS ...](#)

Aug 3, 2025 · A Battery Management System (BMS) is an electronic control unit that monitors and manages rechargeable battery packs to ensure safe operation, optimal performance, and ...



[What Is Battery Management System - Detailed Explanation](#)

Oct 23, 2025 · The battery management system (BMS) serves as the neural center of battery packs and is an indispensable part of modern electric vehicles, portable electronic devices, ...

Contact Us

For catalog requests, pricing, or partnerships, please visit:
<https://www.woodgoods.pl>

Scan QR Code for More Information



<https://www.woodgoods.pl>