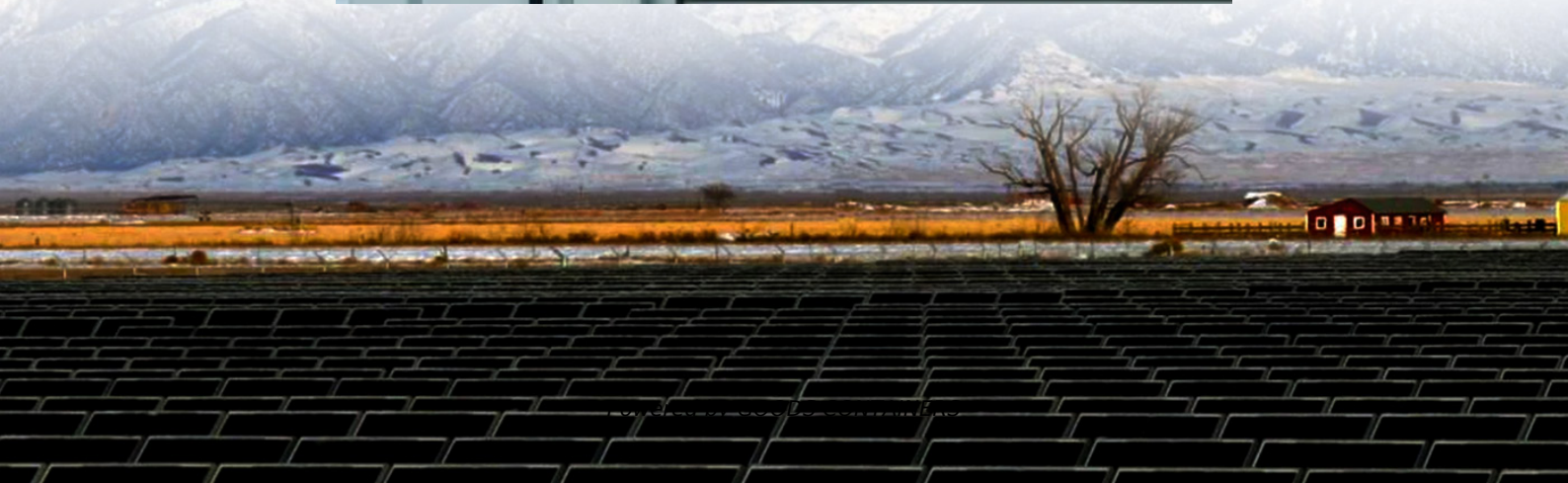


# **Luxembourg City Communications 5G base station shut down**





## Overview

---

Does Luxembourg have a 5G strategy?

Luxembourg has drafted a 5G Strategy. Luxembourg's Recovery and Resilience Plan (RRP) does not include any investment in connectivity, as the policy focus is on ensuring that private investment is sufficient to fulfil the objectives for 2025.

What is Luxembourg's National Broadband competence office?

The Department of Media, Connectivity and Digital Policy (Service des Médias, de la Connectivité et de la politique Numérique) of the Ministry of State (Ministère d'Etat) is Luxembourg's national Broadband Competence Office, in charge of digital connectivity strategy, its coordination as well as implementation.

What is Luxembourg's ultra-high-speed broadband strategy 2021-2025?

Luxembourg's ultra-high-speed broadband strategy 2021-2025 aims to achieve high performance connectivity for all. Objective 3 of the strategy is to accelerate the deployment of future-proof infrastructure, while respecting technological neutrality, to meet the current and future needs of all households, regardless of their geographical location.

What is a 5G Taskforce?

A 5G taskforce was established to keep Luxembourg at the forefront of connectivity. 5G was launched by Post Luxembourg, Orange and Proximus in 2020. Luxembourg has drafted a 5G Strategy.



## Luxembourg City Communications 5G base station shut down

---



### [China's strides in advancing 5G development](#)

Jun 6, 2024 · Today, with over 3.7 million 5G base stations installed nationwide, the large-scale application of 5G in China has greatly benefited both individuals and businesses, bringing ...

### [Mobile Communication Network Base Station Deployment Under 5G](#)

Apr 13, 2025 · This paper discusses the site optimization technology of mobile communication network, especially in the aspects of enhancing coverage and optimizing base station layout. ...



### [Beijing Leads the Nation in 5G Base Stations](#)

May 20, 2024 · Beijing has constructed about 114,500 5G base stations as of April, with a density of 52 stations per 10,000 people, ranking first in China, said an official on Friday. "Beijing is ...

### [Latest 5G Engineering Updates for European Telecoms](#)

Mar 5, 2025 · A 5G base station is the lynchpin in the network, harnessing higher frequencies and massive MIMO technologies to deliver ultra-fast, low-latency communications. Unlike their ...



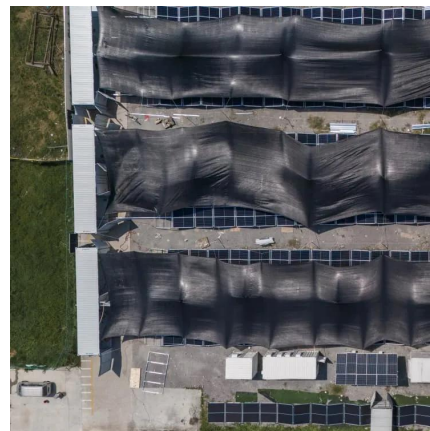
### [Application of AI technology 5G base station](#)

Dec 9, 2020 · According to the different characteristics of communication services in time and space distribution and the change of network load, under the premise of ensuring the user's ...



### **400 5G towers to appear in Luxembourg -- high-speed communication ...**

Aug 24, 2022 · By 2025, the Luxembourg government plans to install 400 new 5G towers in the country. Areas for the new towers have already been selected, 391 of them have been ...



### [Optimization of 5G base station coverage based on self ...](#)

Sep 1, 2024 · With the calibrated model, a detailed link budget analysis was performed on the planning area, calculating the maximum coverage radius required for a single base station to ...





## Contact Us

---

For catalog requests, pricing, or partnerships, please visit:  
<https://www.woodgoods.pl>

### Scan QR Code for More Information



<https://www.woodgoods.pl>