

Is the 220v DC inverter output stable





Overview

How much power does a 220 volt inverter draw?

This 3 V to 220 V inverter circuit may draw around 70 ma from the 3 V battery (B1). The inverter circuit seen above is built around a straightforward astable multivibrator, which pushes and pulls its output via the secondary of a center-tapped, 12-volt step down power transformer. The circuit is powered by 6 volts of DC from four AAA batteries.

What is a DC to AC inverter circuit?

A DC to AC inverter circuit transforms 12V DC input into 220V AC output, enabling you to power standard household devices from battery sources. This comprehensive guide will walk you through the theory, components, design considerations, and step-by-step construction of a reliable 12V to 220V inverter circuit.

What is a simple 12V to 220V inverter?

Simple 12V to 220V inverters find widespread use in automotive applications, solar power systems, emergency backup power, and portable power solutions. Understanding load characteristics helps determine appropriate inverter specifications and ensures reliable operation.

How does a 3 V 220 V inverter work?

The next 3 V to 220 V inverter circuit is designed to work in a blocking oscillator mode having an operating frequency set at around 400 Hz. The transistor used can be any PNP power transistor. The center tap transformer can be any standard step down transformer. This transformer provides the feedback and the voltage boosting both together.



Is the 220v DC inverter output stable



[How does an inverter help stabilize voltage fluctuations?](#)

Inverters are power electronic devices that convert direct current (DC) to alternating current (AC). In certain applications, they can play a crucial role in stabilizing voltage fluctuations within the ...

[How does a 12V to 220V Inverter Work?](#)

Aug 7, 2024 · If we want to convert 12V DC to 220V AC, we often use the inverter composed of input interface voltage starting circuit, DC conversion circuit, feedback circuit, Ic oscillation ...



[Simple Inverters 12V to 220V, comparison, testing, and ...](#)

Apr 15, 2023 · The DC output voltage is also around 240V and remains above 200V even with a load of 50 to 70 milliamps (10-15 watts). During long-term load, the mosfets remain cool.

[How to make this inverter output voltage stable](#)

Jan 1, 2023 · The circuit diagram below is an inverter that has an output voltage ranging from 110 to 200 volt AC. My problem is anytime I turn it on the output voltage keeps going on and off ...



[220 Volt Inverter: The Ultimate Guide to Choosing the Right...](#)

May 23, 2025 · A 220 volt inverter converts DC power from batteries into 220V AC power, allowing you to run appliances when traditional power sources are unavailable. How do I ...



[Simple Inverters 12V to 220V, comparison, testing, and real](#)

Apr 15, 2023 · The DC output voltage is also around 240V and remains above 200V even with a load of 50 to 70 milliamps (10-15 watts). During long-term load, the mosfets remain cool.



[Understanding the Basics: How a 12V to 220V Inverter Works ...](#)

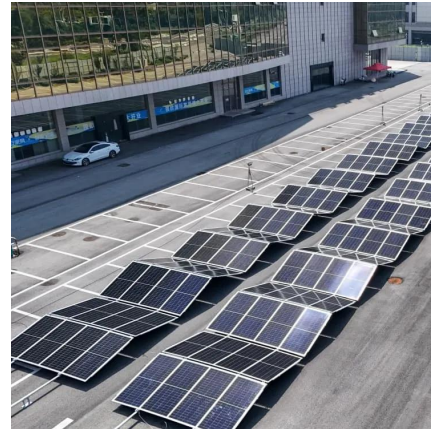
Sep 2, 2024 · Input Stage: The inverter receives 12V DC power from a battery. Oscillator: An oscillator generates a high-frequency signal that switches the DC input. Transformer: The ...





[Changi 2000W DC 12V AC 220V 230V pure sine wave power inverter](#)

Dec 5, 2025 · FEATURES * High quality DC to AC pure sine wave. * The main control chip adopts high-speed and stable MCU, intelligent control, real-time monitoring, AC output frequency is ...



Complete Guide to Building a DC to AC Inverter Circuit: 12V to 220V

1 day ago · A DC to AC inverter circuit transforms 12V DC input into 220V AC output, enabling you to power standard household devices from battery sources. This comprehensive guide will ...

Contact Us

For catalog requests, pricing, or partnerships, please visit:
<https://www.woodgoods.pl>

Scan QR Code for More Information



<https://www.woodgoods.pl>