

# Inverter square wave output voltage





## Overview

---

What are the characteristics of square wave inverters?

- In square wave inverters, maximum output voltage is achievable. However there is NO control in harmonics and output voltage magnitude.
- The harmonics are always at three, five, seven etc times the fundamental frequency.
- Hence the cut-off frequency of the low pass filter is somewhat fixed.

What is the output voltage of an inverter?

The output voltage is a square wave of amplitude  $V$  as shown in Fig. 1 (b). The frequency of the firing pulses decides the frequency of the inverter. (a).

What is the full-bridge configuration of a square wave inverter?

The full-bridge configuration of a Square Wave Inverter is shown in Fig. 1 (a). Thyristors Th 1 and Th 2 are fired during the first half-cycle and thyristors Th 3 and Th 4 are fired during the second half-cycle of the output voltage.

What is the power rating of a square wave inverter?

The power rating of a square wave inverter refers to the maximum amount of power it can supply to its load. It's essential to select an inverter with a power rating that matches the needs of the intended load. The load type has a significant influence on the performance of a square wave inverter.



## Inverter square wave output voltage

---

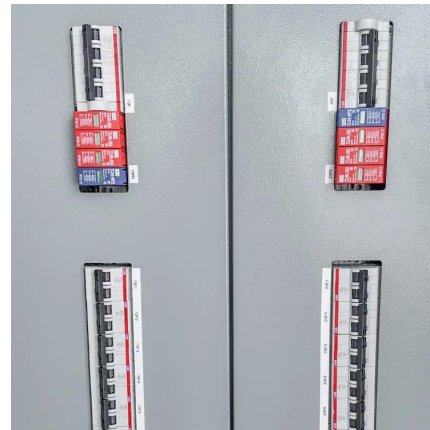


### [Square Wave Inverter - Electricity - Magnetism](#)

Oct 26, 2023 · Square wave inverters have high harmonic content due to their abrupt voltage transitions. Harmonic distortion can cause various issues, including increased heating in ...

### [Square Wave Inverter - Definition, Circuit Diagram & Waveform](#)

Jul 10, 2021 · The full-bridge configuration of a Square Wave Inverter is shown in Fig. 1 (a). Thyristors Th 1 and Th 2 are fired during the first half-cycle and thyristors Th 3 and Th 4 are ...

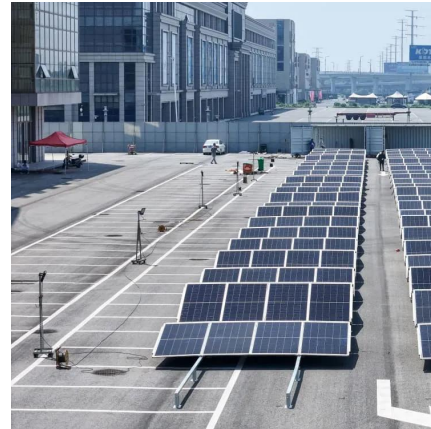


### [Inverter Types & Working Principle , Sine Wave, Square Wave...](#)

3 days ago · The article provides an overview of inverter technology, explaining how inverters convert DC to AC power and detailing the different types of inverters--sine wave, square ...

### [Single Phase Half Bridge Inverter , Circuit, operation and ...](#)

May 6, 2023 · Single Phase Full Bridge Inverter is basically a voltage source inverter. Unlike Single Phase Half Bridge Inverter, this inverter does not require three wire DC input supply. ...



### [Inverter Types & Working Principle , Sine Wave, Square ...](#)



How Does An Inverter Work? Modular Inverters System Square Wave Inverter Working Modified Sine Wave Inverter Working Single-Phase Sine Wave Inverter Working Basic Operation of The Sine Wave Inverter Three-Phase Inverter Working A switching circuit is used in the conversion of DC voltage to an alternating (or bipolar) square wave voltage. One method is the use of the inverter bridge (also known as an H-bridge), which is illustrated in Figure 4. The switch symbols are used to represent switching transistors (IGBTs or MOSFETs) or other types of electronic switching devices. See more on electricalacademia

## **Videos of Inverter square wave Output voltage**

Watch video on bilibili 1.4 Square-Wave Modulation (Three-Phase DC-AC Inverter) bilibili Winter-Chen 122 views Aug 8, 2022 Watch video on numerade The full-bridge inverter of Fig. 1 has a switching sequence that produces a square wave voltage across numerade Feb 18, 2023 Watch video on gadgetronicx Square wave Inverter Circuit - Gadgetronicx gadgetronicx Jul 24, 2019 Watch full video psu

## **6.4. Inverters: principle of operation and parameters**

The three most common types of inverters made for powering AC loads include: (1) pure sine



wave inverter (for general applications), (2)  
modified square wave inverter (for resistive, ...

## Contact Us

---

For catalog requests, pricing, or partnerships, please visit:  
<https://www.woodgoods.pl>

### Scan QR Code for More Information



<https://www.woodgoods.pl>