

Inverter reports reference voltage error





Overview

What are the common inverter error codes?

Inverter error codes can vary depending on the make and model, but there are some common error codes you may encounter. Here are a few examples: Output Voltage is too high. Now, let's delve into each of these error codes and explore the solutions. Check growatt off grid 3kw inverter list in our official site. 1.

How do I know if my inverter is good?

Expected Voltage: Ensure it matches the regional voltage (e.g., 120V or 230V). Rated Output: Confirm it aligns with inverter specifications; stable. Voltage Stability: Verify no fluctuations or sags under load. Load Handling: Ensure consistent performance without overvoltage or under voltage under different loads. Green: Normal operation.

Why is my inverter error code not working?

If the voltage is within the tolerance range and the error code remains, contact us for an inspection. The utility grid has been disconnected, the AC cable is damaged or the grid voltage at the connection point of the inverter is too low. The inverter has disconnected from the utility grid. Make sure that the AC cable is not damaged.

How to check if an inverter is overvoltage?

Then measure the input voltage or check the DC bus parameter at fault (you can check this parameter in the monitor parameter set of the inverter). Input overvoltage of the inverter is usually caused by a problem with the substation that increases the voltage at the inverter power supply.



Inverter reports reference voltage error



[7 inverter error codes + practical solution](#)

Jul 18, 2024 · Inverters have become an essential part of our daily lives, powering everything from our homes to our workplaces. They provide a critical link between the electricity grid and our ...

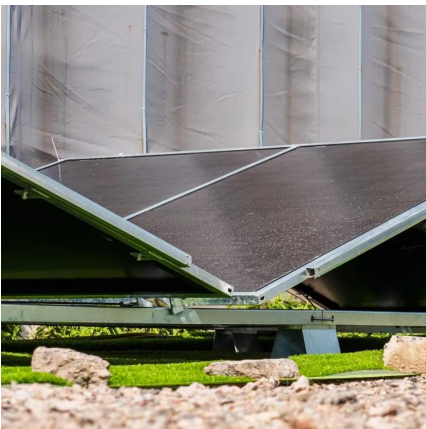
[Inverter string reporting "AC Voltage Out Of Range"](#)

I recently had one inverter that malfunctioned. A tech from the install company came to replace it, 2.23.23. Coincidentally, the following day a series of panels not on the same circuit ...



[These 32 Common Inverter Faults. Have You Encountered ...](#)

2 days ago · Major faults include external faults, transformer overheating, cabinet overheating, unit faults, inverter overcurrent, high voltage power loss, etc. For external faults, the high ...



[Blueprint: Decoding Inverter Error Codes and When to Escalate](#)

Aug 15, 2025 · A 'Communication Error' often means the inverter cannot properly exchange data with another part of the system, such as a battery management system or an online monitoring ...



[Voltage Troubles? A Guide to Diagnosing Inverter Low Voltage ...](#)

Dec 17, 2023 · Faulty wiring can also result in voltage fluctuations. Diagnosing Inverter Low Voltage Issues If you are experiencing inverter low voltage problems, it's essential to diagnose ...



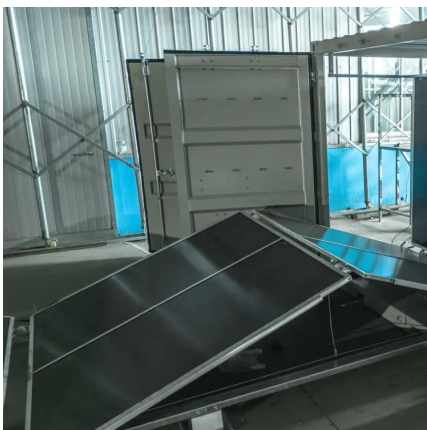
[Power-one/ABB Aurora E026 Error Code - Inverter ...](#)

The E026 'Reference Voltage Error' indicates that your inverter has detected an internal reference voltage (VRef) outside the acceptable range. This reference voltage is essential for accurate ...



[Inverter Initial Diagnostic and Maintenance Guide final](#)

Mar 7, 2025 · Expected Voltage: Ensure it matches the regional voltage (e.g., 120V or 230V). Rated Output: Confirm it aligns with inverter specifications; stable. Voltage Stability: Verify no ...





Contact Us

For catalog requests, pricing, or partnerships, please visit:
<https://www.woodgoods.pl>

Scan QR Code for More Information



<https://www.woodgoods.pl>