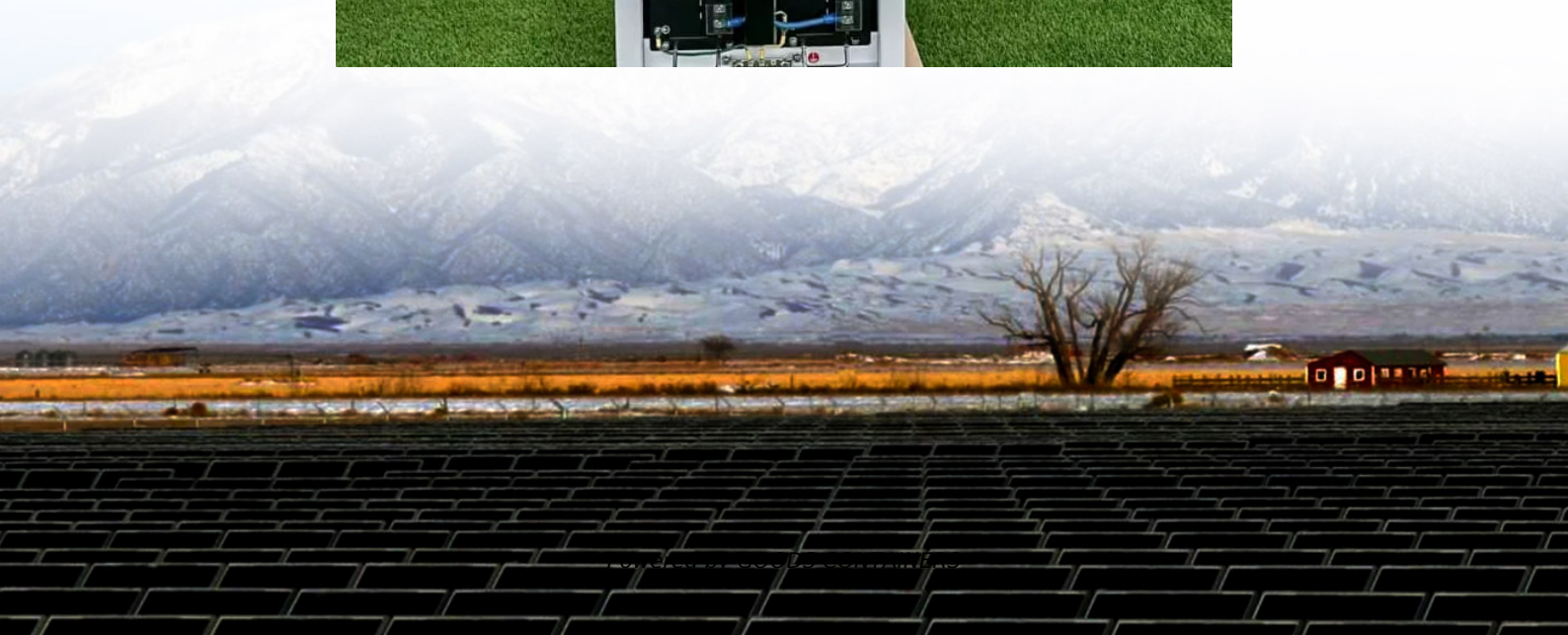


Inverter output three-phase square wave





Overview

What is a 3 phase square wave inverter?

A three-phase square wave inverter is used in a UPS circuit and a low-cost solid-state frequency charger circuit. Thus, this is all about an overview of a three-phase inverter, working principle, design or circuit diagram, conduction modes, and its applications. A 3 phase inverter is used to convert a DC i/p into an AC output.

Can a three phase square wave inverter produce balanced AC voltages?

The three-phase square wave inverter as described above can be used to generate balanced three-phase ac voltages of desired (fundamental) frequency. However harmonic voltages of 5th, 7th and other non-triplen odd multiples of fundamental frequency distort the output voltage.

What shape do the output voltages of a three-phase inverter have?

The output voltages of a three-phase inverter have the shape of a square wave not a pure sinusoidal wave.

What is a 3 phase inverter?

The circuit diagram of a three-phase inverter is shown below. The main function of this kind of inverter is to change the input of DC to the output of three-phase AC. A basic 3 phase inverter includes 3 single phase inverter switches where each switch can be connected to one of the 3 load terminals.



Inverter output three-phase square wave

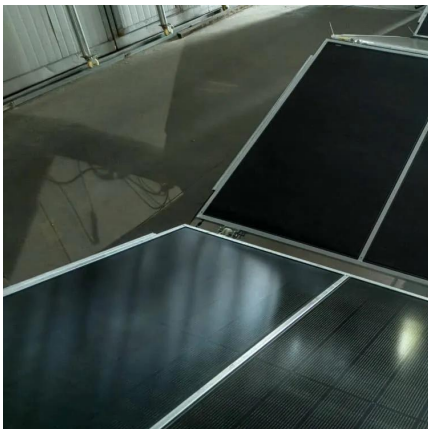


[Three Phase Inverter : Circuit, Working and Its Applications](#)

A three-phase square wave inverter is used in a UPS circuit and a low-cost solid-state frequency charger circuit. Thus, this is all about an overview of a three-phase inverter, working principle, ...

[Lecture 23: Three-Phase Inverters](#)

Feb 24, 2025 · The 3-phase bridge comprises 3 half-bridge legs (one for each phase; a, b, c). The devices are often traditionally numbered as illustrated (Conveying conduction order in "square ...



[Inverter Types & Working Principle , Sine Wave, Square ...](#)

How Does An Inverter Work? Modular Inverters System Square Wave Inverter Working Modified Sine Wave Inverter Working Single-Phase Sine Wave Inverter Working Basic Operation of The Sine Wave Inverter Three-Phase Inverter Working A switching circuit is used in the conversion of DC voltage to an alternating (or bipolar) square wave voltage. One method is the use of the inverter bridge (also known as an H-bridge), which is illustrated in Figure 4. The switch symbols are used to represent switching transistors (IGBTs or MOSFETs) or other types of electronic switching devices. See more on electricalacademia EIProCus

Three Phase Inverter : Circuit, Working and Its ...



A three-phase square wave inverter is used in a UPS circuit and a low-cost solid-state frequency charger circuit. Thus, this is all about an overview of ...

[Inverter Types & Working Principle , Sine Wave, Square Wave...](#)

2 days ago · The article provides an overview of inverter technology, explaining how inverters convert DC to AC power and detailing the different types of inverters--sine wave, square ...



[How does a Three Phase Inverter Work? , inverter](#)

Dec 15, 2023 · The output current waveform is a square wave during the 120-degree energization period with a height equal to that current value. Additionally, to prevent rapid changes in ...

Contact Us

For catalog requests, pricing, or partnerships, please visit:
<https://www.woodgoods.pl>

Scan QR Code for More Information



<https://www.woodgoods.pl>