

# Inverter off-grid at night





## Overview

---

What is an off-grid inverter?

An 'Off Grid' or 'camping' inverter is a type of inverter that requires battery, wind, or solar power to function. It is commonly used off the grid and can be fixed or portable if small enough.

Do solar inverters turn off at night?

Solar inverter systems do turn off at night when there is no sunlight, as solar panels only produce electricity when they are exposed to sunlight. This issue is common with Solectria, often due to a defective inverter. Night Mode - FoxESS Community - Owners & Installers. The inverter shuts off in the evening when there are no PV power.

Which solar power inverter exemplifies the Q at night function?

One solar power inverter that exemplifies the benefits of the Q at Night function is Sungrow's 6.25/6.8 MVA MV Turnkey Station. Here's what makes this inverter system a standout choice for large-scale solar applications:.

What makes a solar inverter system a standout choice?

Here's what makes this inverter system a standout choice for large-scale solar applications: The 6.25/6.8 MVA inverter is designed with the Q at Night function, allowing it to provide essential reactive power support when solar generation is offline.



## Inverter off-grid at night

---



### [Understanding the Q at Night Function in Solar Power Inverters](#)

The Q at Night function allows solar power inverters to provide reactive power support even when solar generation is not occurring. This capability is particularly beneficial ...

### [What Happens to Solar Inverters at Night? Do They Shut ...](#)

In off-grid or hybrid solar systems equipped with battery storage, solar inverters may engage in battery charging during daylight hours to store excess energy for use at night.



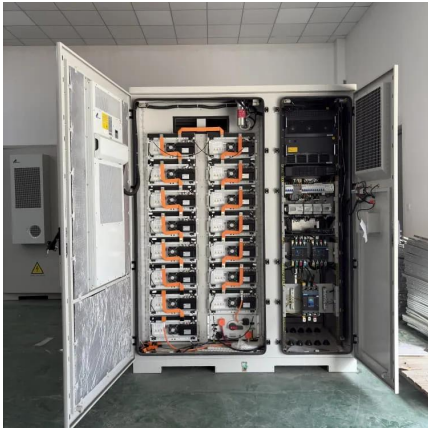
### [Does a Solar Inverter Work at Night? How to Power My ...](#)

The inverter will still work at night and continue to convert the DC power in the batteries into AC power for use. If the batteries run low, they are automatically switched to the ...



### [What Happens to Solar Inverters at Night? Do ...](#)

In off-grid or hybrid solar systems equipped with battery storage, solar inverters may engage in battery charging during daylight hours to store excess energy for use at night.



### [Should I Turn Off the Solar Power Inverter for Home at Night?](#)

For residential and remote home use, our Off-Grid Solar Inverter series is designed for high efficiency and durability. These pure sine wave inverters ensure an uninterrupted ...

### [Solar inverter turn off at night + reasons](#)

Why solar inverter shut off at night Solar inverter turning off at night is a normal and necessary function for solar inverters so that they can conserve energy and protect the system from overloading. By shutting ...



### [Do Off-Grid Solar Inverters Use Power at Night?](#)

Do Off-Grid Solar Inverters Use Power at Night? It often comes as a surprise that an off grid solar inverter doesn't fully power down when your appliances are off. Even in ...



## Does Solar Inverter Work at Night? Unveiling the Facts and

When we start discussing the functionality of solar power systems, the role of solar inverters is indisputable. These devices efficiently convert direct current (DC) harnessed from ...



## Why Is My Off Grid Inverter Working Better at Night

For anyone living off the grid, a reliable power system is more than just a convenience--it's essential. At the heart of that system is the off-grid inverter, responsible for ...

## Understanding the Q at Night Function in

The Q at Night function allows solar power inverters to provide reactive power support even when solar generation is not occurring. This capability is particularly beneficial for maintaining grid stability during ...



## Why Is My Off-Grid System Underperforming at Night?

Struggling with off-grid power loss at night? Pinpoint the cause of underperformance with our guide. Fix battery, inverter, and load issues for reliable nighttime power.



## Why Do Solar Inverters Have A Night Mode?

Solar inverters turn off at night when there is no sunlight to convert into electricity. Solar panels absorb sunlight during the day and convert it into direct current. When there is no sunlight, solar inverters ...



## Why Do Solar Inverters Have A Night Mode?

Solar inverters turn off at night when there is no sunlight to convert into electricity. Solar panels absorb sunlight during the day and convert it into direct current. When there is no ...

## Solar inverter turn off at night + reasons

Why solar inverter shut off at night Solar inverter turning off at night is a normal and necessary function for solar inverters so that they can conserve energy and protect the system ...



## Contact Us

---

For catalog requests, pricing, or partnerships, please visit:  
<https://www.woodgoods.pl>



## Scan QR Code for More Information



<https://www.woodgoods.pl>