

Inverter connected to battery protection





Overview

What is battery connection for inverter?

An battery connection for inverter is made in a diligent way to achieve proper operation, life span and safety constraint. This article enlightens the features, risks and battery connection for inverter along with specific safety measures, its hazards and troubleshooting strategies.

Why is a good inverter battery connection important?

A secure and proper connection is not just about functionality; it's about safety and maximizing efficiency. A well-connected inverter battery ensures that power flows efficiently, reducing energy loss and preventing potential hazards. Incorrect connections can lead to malfunctions, reduced battery life, or even safety risks like short circuits.

Do inverters need batteries?

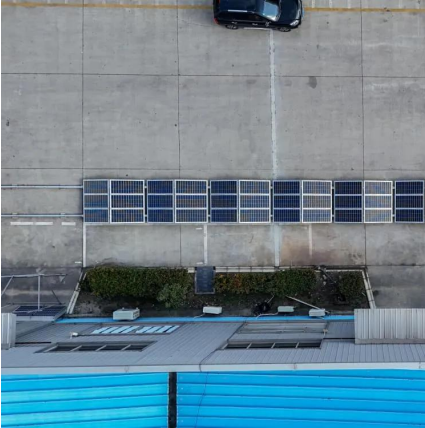
For most residential and small commercial setups, the traditional battery and power inverter combo is the preferred choice to ensure continuous power supply during blackouts. So, while some inverter types do not require batteries, if your priority is uninterrupted backup power, investing in a quality battery in inverter system is essential.

How do you connect an inverter to a battery without sparking?

To connect battery terminal wires without sparking, the positive wire is connected to its terminal first and negative wire in the last. Double check all connections then turn the inverter on. 3. Which wire is used to connect an inverter and a battery?



Inverter connected to battery protection



[Ultimate Guide to Battery in Inverter: Choose & Maintain Right](#)

Jul 7, 2025 · Discover how to choose, maintain, and maximize your battery in inverter for reliable backup power. Expert tips on inverter batteries, lifespan, and safety included!

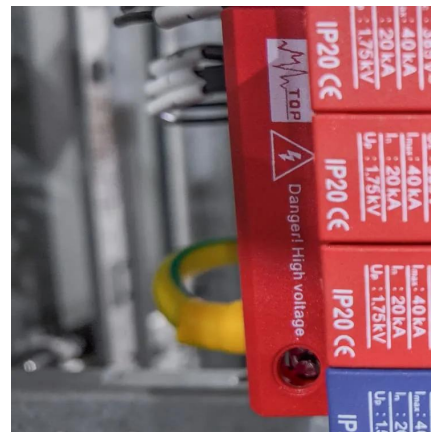


[Clarification on why not to connect inverter to Battery ...](#)

Aug 7, 2025 · Hi all, I'm after some clarity on why one shouldn't connect an inverter to the Victron Smart Battery Connect, as the explanations given don't make sense to me. The two ...

Understanding the Basics of Connecting Lithium Batteries to Inverters

Oct 8, 2024 · Lithium batteries are widely used in energy storage systems due to their high efficiency, long life cycle, and light weight. Connecting a lithium battery to an inverter is crucial ...



[How to Connect an Inverter to a Battery: Step-by-Step Guide ...](#)

Mar 11, 2025 · Learn how to safely and efficiently connect an inverter to a battery with our step-by-step guide. Includes brand-specific tips for Solis, Deye, Megarevo, SRNE, and more. Perfect ...



[Battery connection for inverter](#)

Dec 16, 2024 · An battery connection for inverter is made in a diligent way to achieve proper operation, life span and safety constraint. This article enlightens the features, risks and battery ...



[Inverter Battery Connection: Essential Tips For Safe And ...](#)

Learn essential tips for safe and efficient inverter battery connection. Discover step-by-step guides, wiring techniques, and troubleshooting tips to optimize your power backup system's ...



[Hybrid Inverter and Lithium Batteries: Setup Guide and Best ...](#)

set up communication between lithium batteries and a hybrid inverter with our detailed step-by-step guide. Ensure optimal performance and longevity of your energy storage system by ...





[Power Inverter: Can I Hook It Directly to the Battery for Safe](#)

Apr 6, 2025 · Enhanced Battery Protection:
Enhanced battery protection is another benefit of direct connections. When an inverter connects directly to a battery, it can better monitor ...



Contact Us

For catalog requests, pricing, or partnerships, please visit:
<https://www.woodgoods.pl>

Scan QR Code for More Information



<https://www.woodgoods.pl>