

# Inverter access power is too large





## Overview

---

### Are inverters too big?

Inverters play a crucial role in converting DC power to AC power, but choosing the right size is essential for optimal performance. In this article, we'll explore the potential implications of using an inverter that is too big for your power needs, shedding light on the effects and considerations associated with oversized inverters.

### What happens if inverter capacity exceeds rated capacity?

If the power demand exceeds the inverter's rated capacity, the system may experience issues such as overheating, shutdowns, or even permanent damage to the inverter. Inverter capacity overload happens when the electrical load (the total amount of power drawn by connected appliances) exceeds the power rating of the inverter.

### How to avoid oversizing a power inverter?

Accurate assessment of power demands is crucial to avoid oversizing and its associated implications. The use of an oversized inverter can contribute to increased wear and tear on the connected appliances. The mismatch in power capacity may lead to unnecessary stress on the devices, potentially shortening their lifespan.

### Does an oversized inverter waste power?

No, but it wastes solar potential. Panels generate DC power, but the inverter's inefficiency at low loads reduces usable AC output. Can I use a power optimizer with an oversized inverter?



## Inverter access power is too large

---



### [What Happens When the Inverter Is Too Big for the Battery?](#)

What are the effects of using an oversized inverter with a battery? When an inverter is too large for the battery it is connected to, several problems can arise: Reduced Efficiency: Oversized ...

### [Is your inverter too big? Understanding the downsides of ...](#)

2 days ago · At first glance, a more powerful inverter seems like a good idea: more headroom, better handling of peak loads, and "it's always better to have more." But in practice, a ...



### [What Happens If You Overload Your Inverter? Real Dangers ...](#)

May 26, 2025 · This in-depth guide breaks down the symptoms, dangers, and long-term effects of pushing your inverter too hard. Learn how to calculate load, prevent overload, and fix issues if ...

### [Maximum Inverter Power & Limit Grid Feed In](#)

Mar 1, 2025 · If battery is full, available excess power is feed into the grid although the grid setpoint is lower. To avoid triggering the fuse of a week grid connection, I like to limit the ...



### [What Happens If Your Inverter Is Too Big? Risks, Solutions](#)

1 day ago · An oversized power inverter can undermine the efficiency, cost-effectiveness, and longevity of your power system. While it might seem like a "safer" choice, improper sizing ...



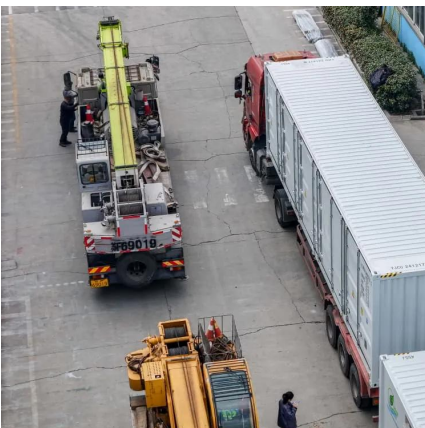
### [What Happens When You Overload an Inverter? A Guide to ...](#)

Nov 25, 2024 · Inverters are designed to supply uninterrupted power by converting stored DC energy into usable AC electricity. However, like any electrical system, they have limitations. ...



### [How to Resolve Inverter Capacity Overload and Prevent ...](#)

Dec 5, 2025 · Inverter capacity overload is one of the most common issues encountered in solar energy systems. It occurs when the power demand from connected appliances exceeds the ...





### [Can a Power Inverter Be Too Big? Understanding the Risks...](#)

Understanding Power Inverters and Their Functions A power inverter is an electrical device that converts DC (direct current) power from a battery or solar panel into AC (alternating current) ...



### [What Happens If the Inverter Is Too Big](#)

Nov 20, 2023 · Inverters play a crucial role in converting DC power to AC power, but choosing the right size is essential for optimal performance. In this article, we'll explore the potential ...

## Contact Us

---

For catalog requests, pricing, or partnerships, please visit:  
<https://www.woodgoods.pl>

**Scan QR Code for More Information**



<https://www.woodgoods.pl>