

# Inverter PV panel distance





## Overview

---

How far away should a solar panel inverter be?

When considering the solar panel inverter distance, one of the first things to remember is how far your inverter and battery are from the main electrical panel. For example, placing your inverter and battery in a guest house 100 feet away from the main panel can affect your system's performance. Voltage Drop and Efficiency.

How far should a solar panel inverter be from a guest house?

In conclusion, managing your solar panel inverter distance by storing the inverter and battery in a guest house and running the lines to the main panel over 100 feet is practical. This is true, provided the system is designed correctly.

How do I choose the right solar panel inverter?

Choosing the right inverter is essential for effectively managing your solar panel inverter distance. At Advanced Energy Systems, we recommend using high-quality inverters like the Victron Quattro 48/10,000. These inverters are designed to handle higher input voltages.

Do solar panels need a solar inverter?

The distance between the solar panels and the inverter can have a significant impact on the system's efficiency. Ideally, the inverter should be installed close to the solar array to minimize voltage drop.



## Inverter PV panel distance

---

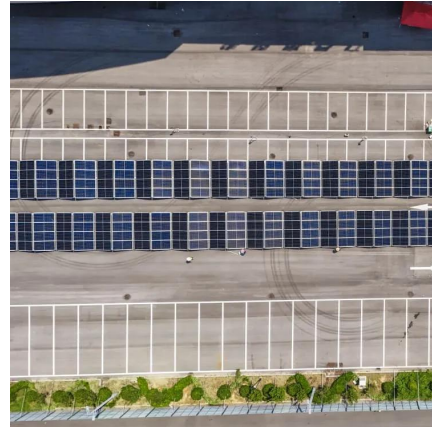


### [How Far Can Solar Panels Be from the Inverter? A Guide to ...](#)

Aug 2, 2023 · One critical component of a solar power system is the inverter, which converts the direct current (DC) electricity generated by solar panels into alternating current (AC) electricity ...

### [How Far Can Solar Panels Be from an Inverter? What You ...](#)

Jun 25, 2023 · Want to know the ideal distance between your solar panels and inverter? Learn about the recommended distance, the consequences of exceeding it, and solutions for long ...



### [How Far Can Solar Panels Be From the Inverter?](#)

Jul 15, 2025 · When considering solar energy systems, a common question arises: "how far away can solar panels be from inverter?" Understanding this distance is crucial for optimizing ...

### [Distances from panels to inverter , DIY Solar Power Forum](#)

Jul 18, 2023 · With high voltage dc used on modern solar systems the distance between panels and inverters can be quite far 100s feet possible. Inverters and batteries should be close to the ...



### [Solar Panel Inverter Distance: How Far Can They Be from ...](#)

2 days ago · When considering your solar panel inverter distance, storing the inverter and batteries in a guest house is a practical decision, especially for safety and temperature control. ...



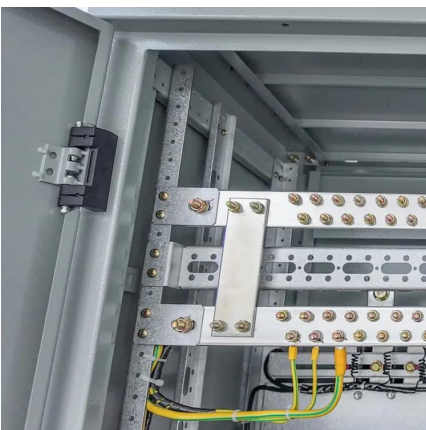
### [How Far Away Can Solar Panels Be From Inverter?](#)

Mar 9, 2025 · A distance of 50 feet or less will keep the voltage drop at 2, which is the acceptable limit for solar panels. Ideally, solar panels should be as close to the inverter and charge ...



### [How Far Can Solar Panels Be From Inverter](#)

How Far Can Solar Panels Be from Inverter?What Does It Depend on How Far Can Solar Panels Be Away from Inverter?Why Is It Important to Know How Far Can Solar Panels Be Away from The Inverter?How Will You Know If Your Solar Panels Are Too Far Away from The Inverter?Final Thoughts on The Distance Between Solar Panels and InvertersIdeally, solar panels should be as close to the inverter and charge controller as possible. In situations where the panels are roof-mounted, this typically translates to anywhere





between 20 and 50 feet from a group of panels to the inverter. When it isn't possible to roof solar mount panels, and with excessive shade conditions clo...See more on solivace

## Videos of Inverter PV Panel Distance

Watch video on solvoltaics Solar Panel Distance (Battery Charge Controller Inverter/House) - Solar Panel Installation, Mounting, ...solvoltaics Sep 9, 2022  
Watch video on solarlivingsavvy How to Calculate Solar Panel Battery and Inverter? - Solar Living Savvysolarlivingsavvy Jan 14, 2024  
Watch video on huawei SUN2000-50KTL-M3 User Guide , solar Inverter Support Page , HUAWEI Smart PV Globalhuawei 10 months ago  
Watch full videoDIY Solar Power Forum

## Distances from panels to inverter , DIY Solar Power Forum

Jul 18, 2023 · With high voltage dc used on modern solar systems the distance between panels and inverters can be quite far 100s feet possible. Inverters and batteries should be close to the ...

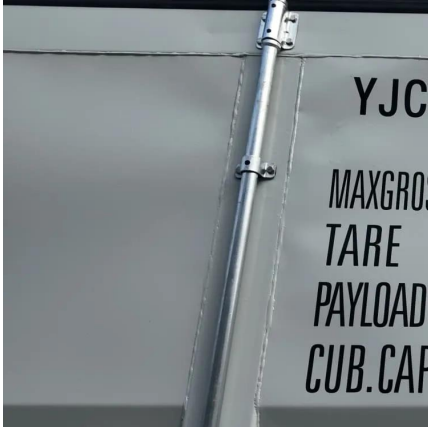
### [How Far Can Solar Inverter be From Main Panel? Get Answers](#)

Jan 11, 2024 · The distance between the solar inverter and the main electrical panel, however, is a less well-known but crucial part of this procedure. Let us explore this often-overlooked ...



### [How far away can solar panels be from inverter?](#)

Nov 21, 2023 · The distance between solar panels and the inverter in a photovoltaic (PV) system can vary depending on factors such as system design, cable length limitations, and



electrical ...

## Contact Us

---

For catalog requests, pricing, or partnerships, please visit:  
<https://www.woodgoods.pl>

## Scan QR Code for More Information



<https://www.woodgoods.pl>