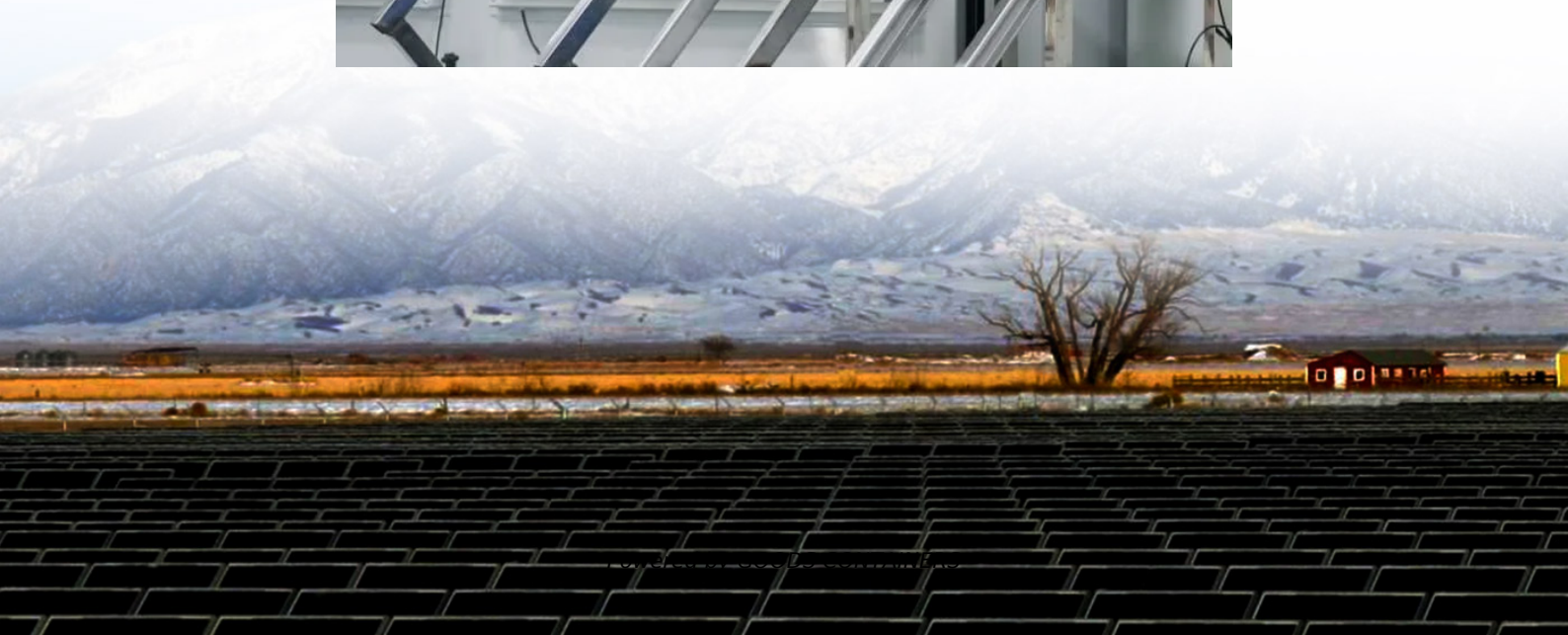


How to isolate a mobile base station





Overview

What is a mobile base station?

A mobile base station, also called a base transceiver station (BTS), is a fixed radio transceiver in any mobile communication network or wide area network (WAN). The base station connects mobile devices to the network and routes them to other terminals in the network or to the core network of a mobile operator. Read more [Explore Mobile base](#).

What is antenna isolation?

Antenna isolation is a critical factor in the design and operation of communication systems, especially where multiple antennas are used close together, such as in cellular base stations, wireless routers, and other RF (Radio Frequency) communication devices.

How many dB can a sub-3ghz base station antenna isolate?

According to Huawei antenna test results, when d equals 0.1 m, an isolation greater than 23 dB between Sub-3GHz base station antennas and C-band NR antennas can be achieved.

How to improve antenna isolation?

Antenna Positioning and Orientation: Adjusting the orientation or polarization of antennas relative to each other can significantly improve isolation. Antennas polarized orthogonally (at right angles to each other) typically exhibit better isolation.



How to isolate a mobile base station



[Understanding Antenna Isolation: Importance, ...](#)

Apr 18, 2024 · Understanding Antenna Isolation: Importance, Measurement, and Techniques
Antenna isolation is a critical factor in the design and operation of communication systems, ...

[Enhancing Farfield Isolation between Nearby Base Station ...](#)

Dec 12, 2022 · With the development of 5th Generation Mobile Communication Technology, large array antennas have been widely used in base stations, while the farfield isolation of array ...



[How to isolate the communication base station energy ...](#)

Nov 16, 2025 · A telecom battery backup system is a comprehensive portfolio of energy storage batteries used as backup power for base stations to ensure a reliable and stable power supply. ...

[How much base station antenna isolation is required?](#)

Jan 19, 2013 · How much base station antenna isolation is required? We would like to see at least 30dB of isolation between base station



antennas. Antenna isolation increases with distance. ...

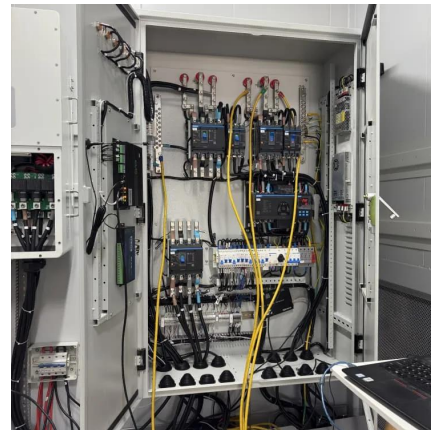


[An Independent UAV-Based Mobile Base Station](#)

Feb 22, 2025 · We develop a prototype of a proposed mobile base station and test its operation in an outdoor environment. The experimental results provide a sufficient data rate to make an ...

[Cooling for Mobile Base Stations and Cell Towers](#)

Dec 4, 2025 · Many base stations and cell phone towers are found in isolated locations that can be difficult to quickly access and repair. As a result, long life operation is required in wireless ...



Contact Us

For catalog requests, pricing, or partnerships, please visit:
<https://www.woodgoods.pl>



Scan QR Code for More Information



<https://www.woodgoods.pl>