

How to connect the solar container communication station inverter to the network





Overview

How do I connect a wifi module to a solar inverter?

1. Connect the WiFi Module: Locate the designated port on your solar inverter for connecting the WiFi module. Typically, this port is labeled “WiFi” or “Communication.” Insert the WiFi module securely into the port. 2.

How do I connect my inverter to my phone?

Connect your smartphone or computer to the inverter’s WiFi: Go to your WiFi settings on your device. Look for the inverter’s WiFi network (SSID), typically labeled with the inverter brand name. Connect to this WiFi network. If prompted for a password, refer to the inverter’s manual for the default password (usually provided in the documentation).

How do I connect my inverter to my home WiFi?

Once logged in, go to the “Network” or “WiFi” settings section, depending on the interface. Select your home WiFi network: The inverter will scan for available networks. Select your home WiFi network from the list of options. Enter your WiFi password: Type in your home WiFi password carefully, ensuring there are no errors.

How do I connect my solar inverter to my home network?

Use proper cable glands and conduits to protect the wires from physical damage and adverse weather conditions. In the case of the Anker SOLIX Balcony Solar Power System, connecting the inverter to your home network is a straightforward process that involves the use of a Schuko connection cable.



How to connect the solar container communication station inverter



[The Ultimate Guide to Setting Up a Solar Inverter WiFi Module](#)

Dec 5, 2025 · Configuring the WiFi Module 1. Power Up the Inverter: Reconnect the solar inverter to the electrical grid or power it on using the power switch. The WiFi module will begin ...

[How To Connect Solar Inverter To WiFi - TechFine Step-by ...](#)

Dec 5, 2025 · This article provides a clear, step-by-step guide on how to connect solar inverter to wifi, ensuring seamless integration and real-time performance tracking. Whether you're ...

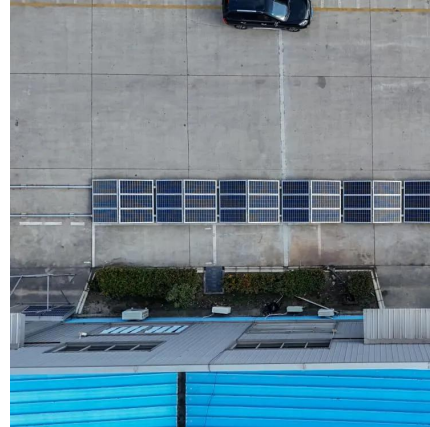


[Connecting the Inverter to the Network](#)

Aug 6, 2021 · Remove the filler plug from the pin connector for network connection to the inverter. Connect the end of the network cable with the mating plug to the inverter. Insert the mating ...

[Connecting an Inverter to the House Network: A ...](#)

Apr 22, 2024 · Knowing how to connect the inverter to the house network is a key step in any solar setup. This guide delves into the specifics of what an inverter does, explores various ...



[How to Connect a Solar Inverter to WiFi: A Step-by-Step Guide](#)

Mar 30, 2025 · As solar technology evolves, modern solar inverters come with smart monitoring features that allow users to track their system's performance remotely. Connecting your solar ...



[Solar energy inverter communication protocols: Wi-Fi, ...](#)

Jun 20, 2025 · In solar applications, solar energy inverter do much more than convert DC power to AC power. They also serve as a communications hub, reporting performance data and ...



Contact Us

For catalog requests, pricing, or partnerships, please visit:
<https://www.woodgoods.pl>



Scan QR Code for More Information



<https://www.woodgoods.pl>