

How to connect the power wires of the base station on the roof





Overview

How do I connect my home to the power grid?

When it comes to connecting your home to the power grid, one of the most efficient and aesthetically pleasing options is to use underground electrical wiring from the utility pole to your house. This method involves running electrical cables beneath the ground, providing a more reliable and visually appealing solution compared to overhead lines.

How do I install underground wiring from a pole to my house?

Installing underground wiring from the pole to your house requires a series of steps that must be done carefully to ensure safety, functionality, and code compliance. Before starting the installation, check with your local utility company and governing authorities to obtain the necessary permits.

How does a home electrical system work?

Wires lead off from the neighbourhood's power lines and connect to individual buildings (homes, apartments, businesses, etc) by first going through the electric meter to measure how much electricity the home uses. The electricity then passes through a service panel, which houses the electrical safety devices (circuit breakers and fuses).

How is a home connected to the electrical grid?

Every home is connected to the electrical grid through some sort of fuse box or circuit breaker as shown in figure 1. The overhead power connection from the utility lines to the service entrance is referred to as the service drop. It has three wires; 1 neutral line and 2 hot lines.



How to connect the power wires of the base station on the roof



[Conduit IP67 Base Station MTCDTIP Hardware ...](#)

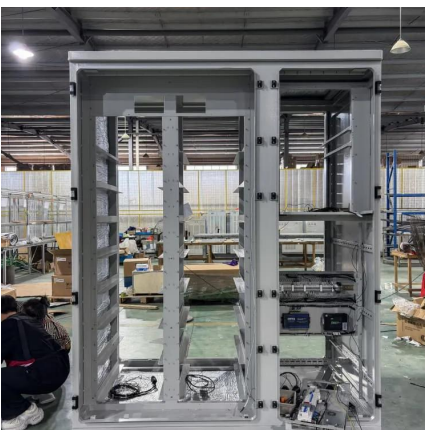
Package Contents
Additional Documentation
Safety Instructions
Attaching the Mounting Bracket
Mounting on a Pole
Mounting on a Wall
To attach the Base Station on a pole: ?
Attach the Base Station to the pole using the supplied hose clamps as shown below.
See more on [multitech energyeducation.ca](#)

Connecting homes to the electrical grid

Oct 27, 2025 · Wires lead off from the neighbourhood's power lines and connect to individual buildings (homes, apartments, businesses, etc) by ...

[How-to wire a power station into your main panel for grid ...](#)

Sep 11, 2023 · Identify an available slot in your main panel to install the circuit breaker for your power station. Remove the panel cover using a screwdriver and carefully position the circuit ...



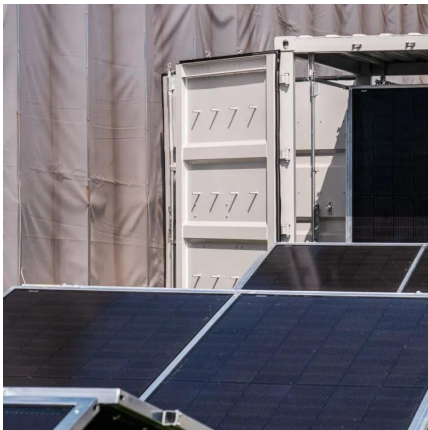
[Conduit IP67 Base Station MTCDTIP Hardware ...](#)

Jul 31, 2025 · Conduit IP67 Base Station safety information before starting Base Station installation. Do not connect power until directed to do so. If you do not install the accessories ...



[How to set up a ham radio base station?](#)

Jul 1, 2025 · How to Set up a Ham Radio Base Station As a ham radio operator, setting up a base station is an exciting project that requires careful planning and execution. A ham radio base ...



[Common ways to set up a base station](#)

Dec 1, 2025 · The following figure shows a n SPS Modular receiver permanent installation: Setting up a base station for daily site use: T-Bar For construction applications where a daily setup ...

[Gateway and Base Station Installation Guide](#)

Aug 11, 2018 · Connect the wires as shown in the Cellular Wiring diagram below. The three wires (white, black, and green) are attached to the power unit and ground (must be connected to ...



[The Ultimate Guide to Electrical Mast and Meter Riser ...](#)

Jul 4, 2024 · What is an electrical riser or service mast? An electrical riser, or service mast, is the vertical housing--typically a 2" or 4" rigid metal conduit--containing the three wires connecting ...



Contact Us

For catalog requests, pricing, or partnerships, please visit:
<https://www.woodgoods.pl>

Scan QR Code for More Information



<https://www.woodgoods.pl>