

How much voltage does the outdoor inverter have





Overview

What voltage does a solar inverter use?

The inverter selected must match the power source, such as batteries or solar panels. Solar and EV systems usually use higher input voltages, such as 48V or more. Output Voltage states the AC voltage produced by the inverter, usually 120V or 230V, depending on the applicable regional standards.

What are the input specifications of a solar inverter?

The input specifications of an inverter concern the DC power originating from the solar panels and how effectively the inverter can handle it. The maximum DC input voltage is all about the peak voltage the inverter can handle from the connected panels. The value resonates with the safety limit for the inverter.

How much power does an inverter use?

An inverter uses a small amount of energy during the conversion process. The difference between the input power and the output power is expressed in percentages. The efficiency of modern inverters is more than 92 %. This means that a maximum of 8 % of the power consumption is used to convert battery voltage to 230V/50Hz.

What is the input voltage of an inverter?

Understanding the inverter voltage is crucial for selecting the right equipment for your power system. Inverter voltage typically falls into three main categories: 12V, 24V, and 48V. These values signify the nominal direct current (DC) input voltage required for the inverter to function optimally. What is the rated input voltage of an inverter?



How much voltage does the outdoor inverter have

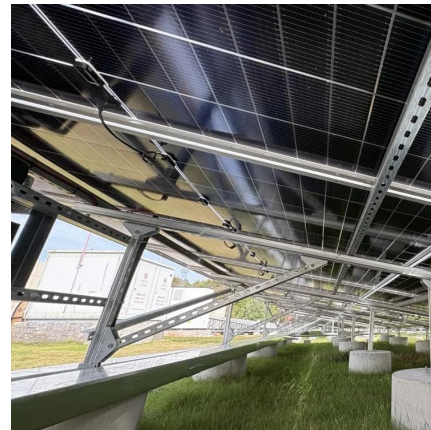


[How many V does the solar inverter have? . NenPower](#)

Mar 3, 2024 · High-voltage inverters can pose safety risks due to the dangerous voltage levels, necessitating enhanced circuitry and safety mechanisms. Furthermore, efficient handling and ...

[Inverter Specifications and Data Sheet](#)

Sep 6, 2025 · The following specifications reflect Tesla Solar Inverter with Site Controller (Tesla P/N 1538000-45-y). For specifications on Tesla Solar Inverter without Site Controller, see ...



[How to Calculate the Maximum Output Power of a Power Inverter](#)

With home systems from batteries from 12V to 48V, the power inverter will always step up the voltage; thus, the current will be lower at the output of the inverter. With step up inverters, the ...

[How To Read And Interpret An Inverter Specification](#)

3 days ago · Input Voltage Input voltage indicates the DC voltage required to operate the inverter. Inverters generally have an input voltage of 12V, 24V, or 48V. The inverter selected must ...



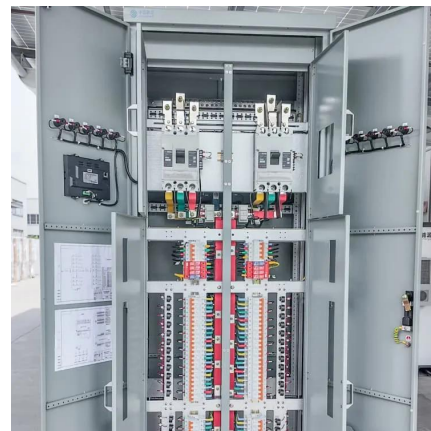
[Inverter Efficiency: Understanding How Much Power You're ...](#)

Jul 21, 2025 · Have you ever wondered how much power you're actually getting from your inverter? Many people think that once they connect their solar panels and batteries to an ...



[48V Inverter: The Ultimate Guide to Efficient and Scalable ...](#)

May 19, 2025 · Unlock efficient power solutions with a 48V inverter--perfect for solar, off-grid, and backup systems. Learn how to choose the best one for your needs now!



[How many volts does a photovoltaic inverter usually have](#)

How many volts is a solar inverter? The inverter is typically equal to either 120 volts or 240 volts depending on the country. Without a solar inverter in your system, you would be unable to ...





Contact Us

For catalog requests, pricing, or partnerships, please visit:
<https://www.woodgoods.pl>

Scan QR Code for More Information



<https://www.woodgoods.pl>