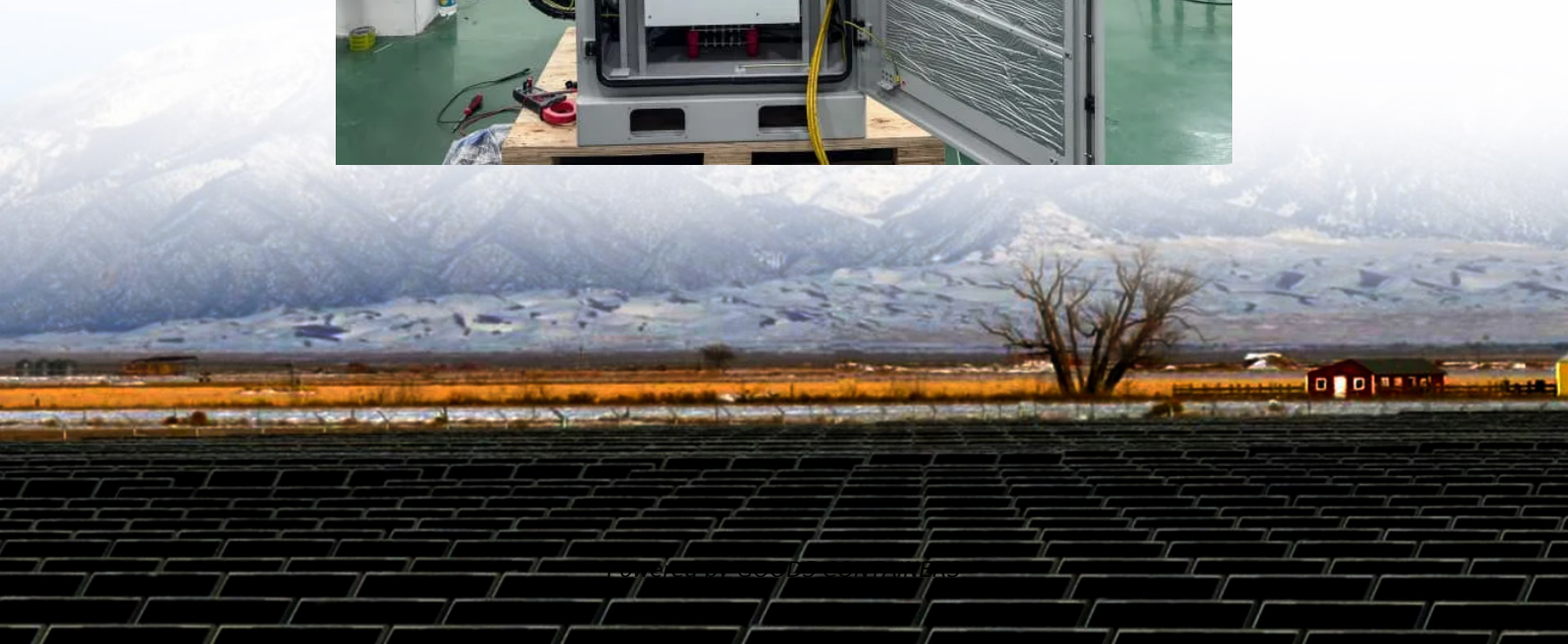


How much electricity does a UPS uninterruptible power supply consume in one hour





Overview

What is a UPS (uninterruptible power supply) calculator?

A UPS (Uninterruptible Power Supply) Calculator is a vital tool designed to help users determine the appropriate UPS size required to support their electronic devices during a power outage. This calculator assists in ensuring that all connected devices can continue operating smoothly without interruption when the main power source fails.

What are uninterruptible power supply hours?

Uninterruptible Power Supply hours refer to the duration a UPS can sustain power to connected devices during an outage. This time can vary widely based on several factors, including battery capacity, load requirements, and the UPS's efficiency. Knowing how to calculate this can help you select the right UPS for your needs.

Do uninterruptible power supplies affect electricity consumption?

Uninterruptible Power Supplies, commonly known as UPS, are essential devices that provide backup power during unexpected electrical outages or voltage fluctuations. However, in order to understand their overall impact on the electricity consumption of your household or office, it is crucial to assess their power consumption.

How does a ups affect power consumption?

Efficiency: UPS units come with different efficiency ratings. Higher efficiency ratings indicate that a UPS converts a larger portion of the incoming electrical power into usable output power, resulting in lower power consumption. **Load:** The load on a UPS, measured in percentage of its capacity, affects its power consumption.



How much electricity does a UPS uninterruptible power supply consume



[Does a Larger UPS System Eat More Power? - UPS Solutions](#)

Jan 18, 2023 · When deciding on which size UPS to go for, one important consideration is how much power they will eat up in the background. For example, does a larger UPS system ...

Uninterruptible Power Supply (UPS) Power Consumption & Electricity ...

Use our Uninterruptible Power Supply (UPS) calculator to determine the power consumption, wattage, and running cost for 7.25 hours. Calculate how this 2000-watt appliance impacts your ...



[Uninterruptible Power Supply Capacity Insights: A Powerful ...](#)

Q6. Does Uninterruptible Power Supply Capacity affect electricity costs? Indirectly, yes. A UPS with a much larger capacity than needed may waste energy, especially if it operates far below ...

[How much does a UPS consume: Assessing the Power Consumption ...](#)

Nov 17, 2023 · Uninterruptible Power Supplies, commonly known as UPS, are essential devices that provide backup power during unexpected electrical outages or voltage fluctuations. ...



Contact Us

For catalog requests, pricing, or partnerships, please visit:
<https://www.woodgoods.pl>

Scan QR Code for More Information



<https://www.woodgoods.pl>