

How much current does the 12V inverter require





Overview

How much power does a 12V inverter draw?

A 2000w 12v pure sine wave inverter draws power based only on its load. Current (Amps) = Load Watts ÷ (Battery Voltage x Inverter Efficiency) Inverter efficiency is typically 85% (0.85). Example (12V system):.

What voltage does an inverter use?

Most residential and small commercial inverters use one of the following DC input voltages: As voltage increases, the current required for the same power decreases, making high-voltage systems more efficient for high-power applications. While calculating inverter current is straightforward, other factors may affect the actual current draw:.

How many Watts should a 12V inverter use?

A quick rule is to divide watts by 10 for 12V systems or 20 for 24V systems. For more accuracy, divide the load by the actual battery voltage and adjust for inverter efficiency (typically 85%). This ensures you can correctly estimate battery drain and size your system safely.

How many amps does a 3000W inverter draw from a 12V battery?

Inverter Current = Power ÷ Voltage Where: If you're working with kilowatts (kW), convert it to watts before calculation: Inverter Current = $1000 \div 12 = 83.33$ Amps So, the inverter draws 83.33 amps from a 12V battery. Inverter Current = $3000 \div 24 = 125$ Amps So, a 3000W inverter on a 24V system pulls 125 amps from the battery.



How much current does the 12V inverter require

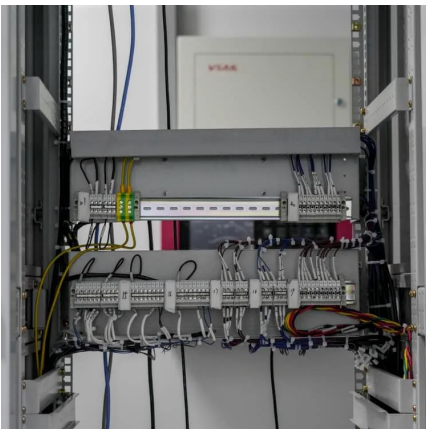


[Inverter Current Calculator, Formula, Inverter Calculation](#)

4 days ago · Inverter Current Formula: Inverter current is the electric current drawn by an inverter to supply power to connected loads. The current depends on the power output required by the ...

[How to Accurately Calculate the Current Draw for a 500W Inverter](#)

Aug 12, 2024 · To calculate current draw for a 500W inverter on a 12V system, use the formula: Current (A) = Power (W) / Voltage (V). Thus, Current = 500W / 12V = approximately 41.67A ...



[How to calculate inverter current demands](#)

May 13, 2025 · The fast method for 12V: Watts ÷ 10 = DC amp current demand For example, a 1,000W inverter (and supplying 1,000W to AC devices) divided by 10 = 100A of battery current ...

Contact Us

For catalog requests, pricing, or partnerships, please visit:
<https://www.woodgoods.pl>



Scan QR Code for More Information



<https://www.woodgoods.pl>