

# **How many °C does it take for Belgian solar container lithium battery pack to be charged quickly**





## Overview

---

What temperature should a lithium battery be stored?

The ideal operating temperature range for lithium batteries is 15°C to 35°C (59°F to 95°F). For storage, it is best to keep them in a temperature range of -20°C to 25°C (-4°F to 77°F). Extreme temperatures can significantly affect performance, safety, and lifespan.

What temperature should a lithium battery be charged at?

High temperature charging may cause the battery to overheat, leading to thermal runaway and safety risks. It is recommended to charge lithium batteries within a suitable temperature range of 0 ° C to 45 ° C (32 ° F to 113 ° F) to ensure optimal performance and safety. \*The lithium battery maximum temperature shall not exceed 45 ° C (113 ° F).

What happens if you charge a lithium battery at high temperatures?

Charging lithium batteries at extreme temperatures can harm their health and performance. At low temperatures, charging efficiency decreases, leading to slower charging times and reduced capacity. High temperatures during charging can cause the battery to overheat, leading to thermal runaway and safety hazards.

How does temperature affect lithium battery performance?

Understanding lithium battery temperature range helps predict performance drop at low temperatures. Li-ion batteries may show up to 30% capacity loss below 0°C (32°F). In cold temperatures, like below 15°C (59°F), lithium batteries experience reduced performance. Chemical reactions within the battery slow down, causing decreased power output.



## How many °C does it take for Belgian solar container lithium battery

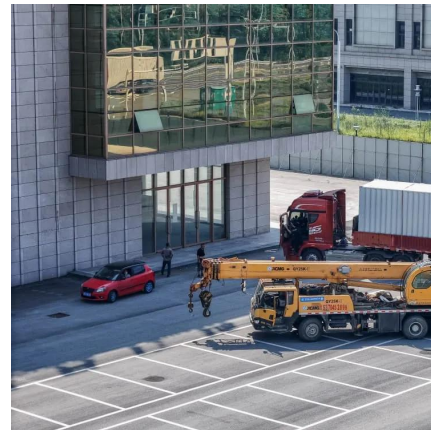


### [Impact of Temperature on Li-ion Batteries Solar Energy](#)

Jul 23, 2025 · Explore how temperature extremes impact Li-ion battery performance & safety in lithium battery factory production, LiFePO4 solar storage systems, and practical thermal ...

### [A Guide to Lithium Battery Temperature Ranges for Optimal ...](#)

Mar 11, 2025 · The ideal operating temperature range for lithium batteries is 15°C to 35°C (59°F to 95°F). For storage, it is best to keep them in a temperature range of -20°C to 25°C (-4°F to 77°F).



### [Lithium Battery Temperature Range: All the information you ...](#)

Jan 17, 2025 · The ambient temperature directly affects the internal temperature of lithium-ion batteries. It is crucial to understand how the lithium battery temperature range affects the ...



### [Comprehensive Guide to Lithium Battery Temperature ...](#)

Aug 26, 2025 · Effective lithium battery temperature management protects your battery packs from dangerous failures and costly downtime. Poor temperature management can trigger ...



### [How Does Temperature Affect LFP & Lithium Battery ...](#)

Aug 21, 2025 · Capacity and voltage steal the spotlight. Yet, temperature quietly governs both the energy you get and how long the pack lasts. Running a lithium-ion cell at a higher temperature ...



### **What is the best temperature range for charging a lithium battery pack**

Dec 3, 2025 · The temperature at which you charge your lithium battery pack has a direct impact on its lifespan. Charging within the optimal temperature range can extend the battery's life by ...



## **Contact Us**

---

For catalog requests, pricing, or partnerships, please visit:  
<https://www.woodgoods.pl>



## Scan QR Code for More Information



<https://www.woodgoods.pl>