

How many watts does a solar light have in winter nights





Overview

Do solar lights work in winter?

Despite the challenges posed by winter conditions, there are some things you can do to keep your solar lights working effectively throughout the colder months. Regularly remove snow, ice, and debris from solar panels to help them keep working properly. Here are some safe and effective methods for cleaning solar panels in winter:.

What is the charging time for solar lights in winter?

The charging time for solar lights in winter can vary significantly depending on several factors, including the amount of available sunlight, the solar panel efficiency, and the capacity of the battery. To understand charging times, it's helpful to be familiar with the concept of Peak Sun Hours (PSH).

How do I choose a solar light for winter use?

When selecting solar lights for year-round use, including winter months, consider the following features: High-capacity batteries that can store more energy for longer operating times. Efficient LED bulbs that consume less power while providing bright illumination.

How much solar power does a 50 watt load need?

Say you have a 50 Watt load operating from dusk to dawn in St. Louis, MO, which only has 2.66 sun hours in the winter and a 14 hour night. This will require a 400 Watt solar, or 26.32 amps from the solar, and 292 amps from the battery to have at least a 5 day backup.



How many watts does a solar light have in winter nights



[How many watts of solar lights for home use in winter](#)

Oct 17, 2024 · The wattage required for solar lights in winter can generally range from 10 to 30 watts, depending on the specific needs of the homeowner. Factors influencing this range ...

[Do Solar Lights Work in Winter? Expert Guide to Year-Round ...](#)

Oct 21, 2025 · Yes, solar lights work in winter. Learn expert tips to maximize performance, choose winter-ready features, and keep your outdoor lights bright all season.



[Do Solar Lights Work in Winter? \(2025\) , Today's Homeowner](#)

Oct 28, 2024 · Solar lighting options work well for most of the year, but winter can present some unique challenges. While solar lights do function during the colder months, their performance ...



[How many watts of solar energy are used in a day in winter?](#)

Feb 1, 2024 · WHAT IMPACT DOES THE LENGTH OF DAYLIGHT HAVE ON SOLAR ENERGY? The duration of daylight is a critical factor for solar energy production. In winter, daylight hours ...



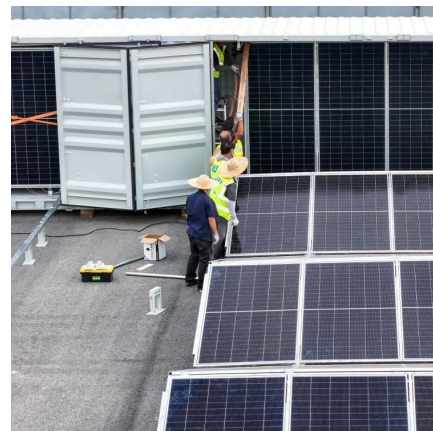
[How to Guarantee Your Solar Lights will Stay On All Night](#)

5 days ago · This will require a 400 Watt solar, or 26.32 amps from the solar, and 292 amps from the battery to have at least a 5 day backup. This same load in San Diego, CA, which has 4.71 ...



[Blog . Do Solar Lights Work When It's Cloudy or in Winter?](#)

Mar 26, 2024 · For more information on layouts and spacing of solar lights check out our Solareye80 ground light spacing guide > Learn more about how to install Solareye80 ground ...



Contact Us

For catalog requests, pricing, or partnerships, please visit:
<https://www.woodgoods.pl>



Scan QR Code for More Information



<https://www.woodgoods.pl>