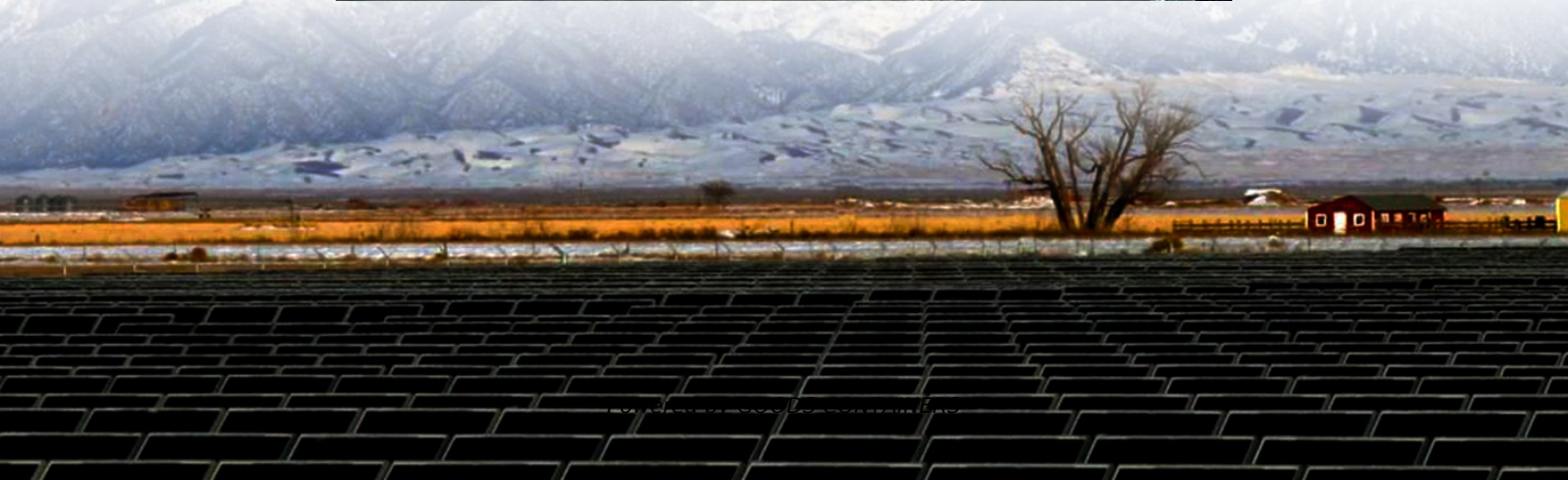
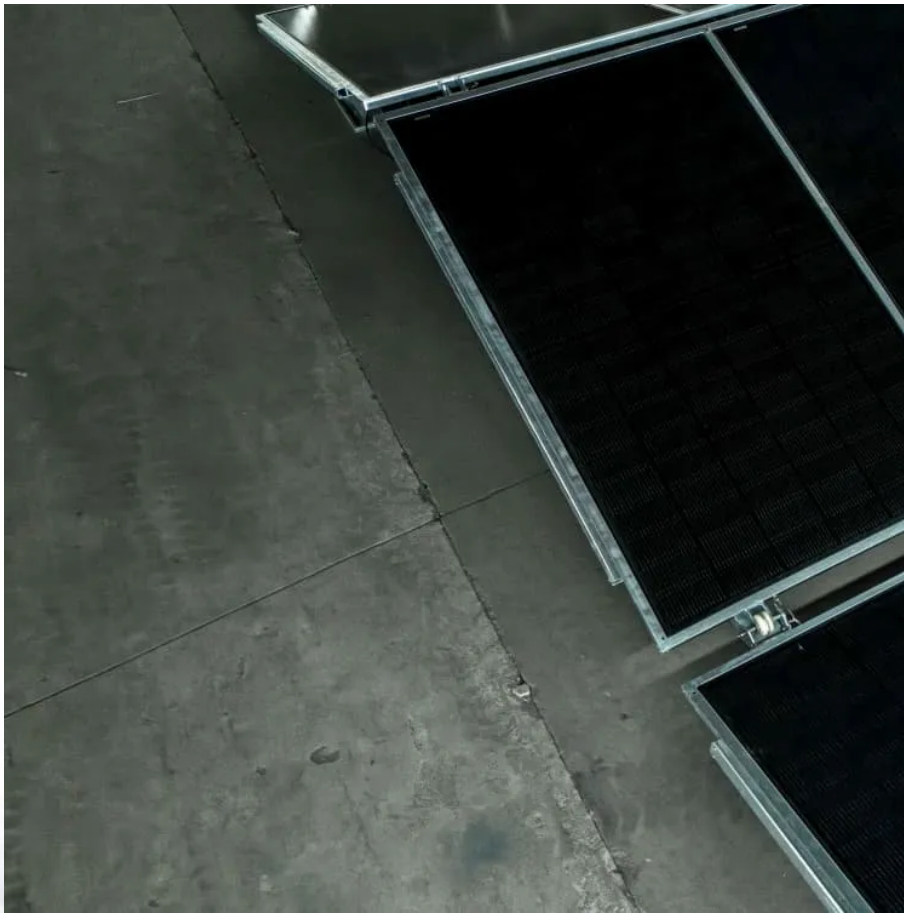


# **How high should the outdoor wireless AP base station be installed**





## Overview

---

How high should a wireless access point be?

Cisco recommend installing the access points no higher than 40 feet (12.2 meters) to allow support for wireless clients on the ground in the immediate vicinity of the access point. Regards Dont forget to Rate helpful posts  
11-12-2015 01:27 AM Hi Sandeep, Thanks for the prompt response.

How high can access points be installed?

Excerpt from doc: The access points can be installed at any height, but best throughput is achieved when all the access points are mounted at the same height. We recommend installing the access points no higher than 40 feet to allow support for wireless clients on the ground.

How difficult is outdoor access point installation?

While outdoor access point installation is generally manageable, it does come with its set of challenges. Here is a summary of the most common issues encountered during installation: Lack of Power Supply: One of the main difficulties in outdoor deployments is ensuring a reliable power source.

How high should APS be installed?

This is because the signal strength of the APs is stronger when they are installed on the ceiling than on the wall. The APs should be installed at a height of 10-12 feet from the floor. This height ensures that the signal is not blocked by any obstacles and provides optimal coverage for the room.



## How high should the outdoor wireless AP base station be installed

---

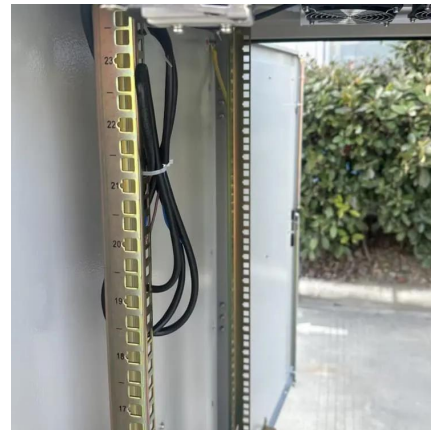


### [Network design challenges and tips for mounting outdoor APs](#)

6 days ago · That AP on a Light Pole Looks Great. But What Happens When the Light Goes Out? Outdoor Wi-Fi networks have many design challenges. Weather is at the top of the list. Heat, ...

### [Best Practices for Mounting Outdoor Access Points](#)

May 22, 2024 · Best Practices for Mounting Outdoor Access Points This article describes the best practices for mounting outdoor access points (APs). For full installation instructions, read the ...



### [How high is too high for an access point??](#)

Dec 18, 2023 · The APs should be installed at a height of 10-12 feet from the floor. This height ensures that the signal is not blocked by any obstacles and provides optimal coverage for the ...

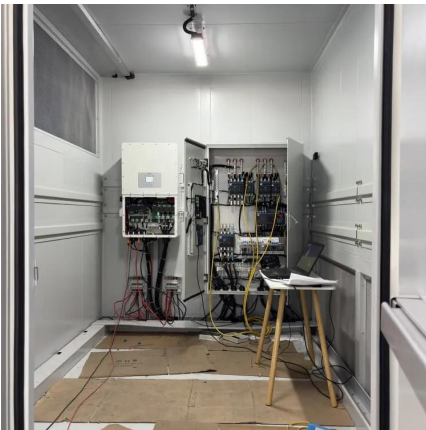
### [Outdoor Ap: mounting height, model to choose](#)

Aug 18, 2024 · Hi guys! I want to replace my old outdoor fixed antenna AP (an old entry level 2.4 tplink device) with a new microtik one 5/2.4 I want to cover the entire property with a single ...



### [Ideal height for mounting Cisco outdoor Wireless Access ...](#)

Nov 11, 2015 · Excerpt from doc: The access points can be installed at any height, but best throughput is achieved when all the access points are mounted at the same height. We ...



### [Step-by-Step Outdoor Access Point Installation Guide](#)

Sep 19, 2024 · This comprehensive guide covers the step-by-step process for outdoor access point installation to provide reliable network coverage in open areas such as campuses or parks.



### [What Installation Modes Are Supported by Indoor and Outdoor ...](#)

Outdoor APs can be installed on walls and poles. The recommended installation height is 4 m to 6 m for omnidirectional antennas, and 6 m to 8 m for directional antennas (60° x 30°).





## Contact Us

---

For catalog requests, pricing, or partnerships, please visit:  
<https://www.woodgoods.pl>

### Scan QR Code for More Information



<https://www.woodgoods.pl>