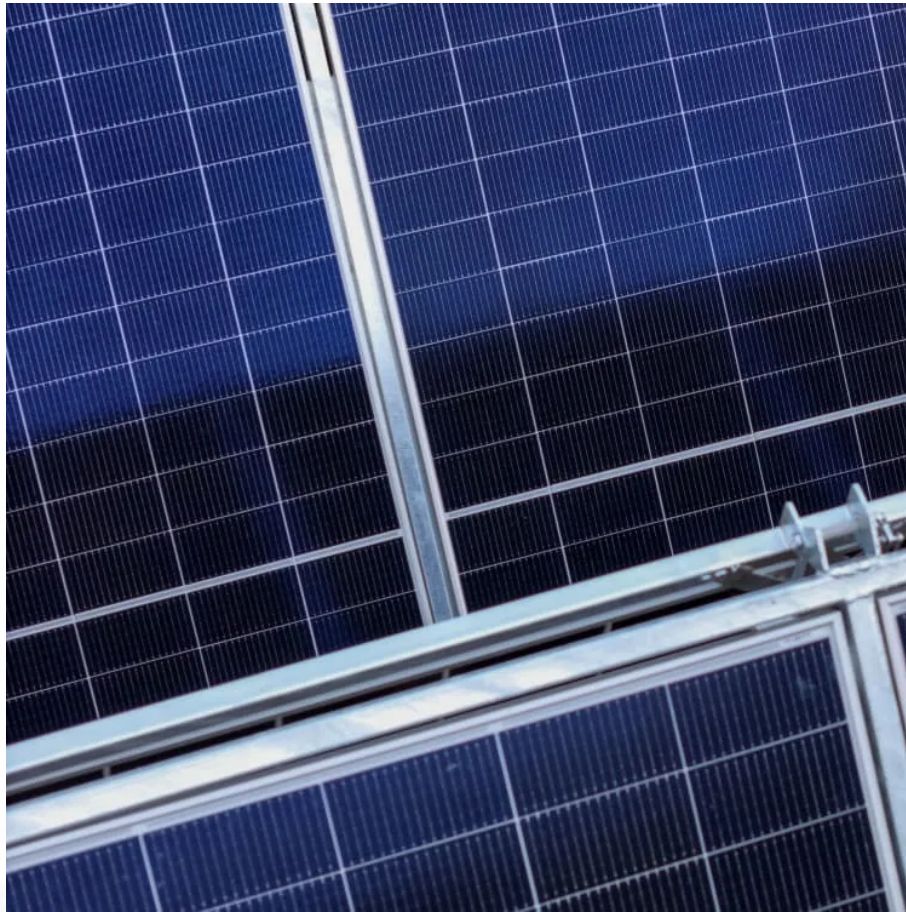


# **How big an inverter should a 50kw power station use**





## Overview

---

How big should a solar inverter be?

To account for power losses assume an 80 percent efficiency. Your solar inverter should have a similar or slightly higher wattage rating than the DC output of your solar panels (which in this case is 4.5 kW). You can size it between 1.15 and 1.5 times larger. The rule of thumb is to size your inverter 1.25 bigger than your solar array.

How many inverters do you need for a 12 kW solar system?

Inverter: one or two inverters of a combined 10 kW–15 kW A 12 kW solar installation in a farm near Berlin utilized a 10 kW inverter with excellent results—saving a couple of hundred dollars on initial cost and still registering peak output. 3. Equate Load Requirements, Not Panel Watts It's not solely about sunlight—actual usage matters, too.

How many Watts Does a solar inverter use?

Depending on where they fall in that band and the size of their solar array, they will likely use a 3, 5, or 10kW inverter. You also need to consider surge watts and voltage drop. Surge watts are the extra power required to start appliances that have motors, such as refrigerators and air conditioners.

How much power does a 5 kW inverter use?

If your system pushes 5,000 watts, a 5,000-watt (or 5 kW) inverter is usually the move. But it's not always one-to-one. Some setups undersize the inverter a bit—say, 4.6 kW for 5 kW of panels—to save cash without losing much power. It's a balancing act between cost, performance, and when you actually use electricity.



## How big an inverter should a 50kw power station use

---

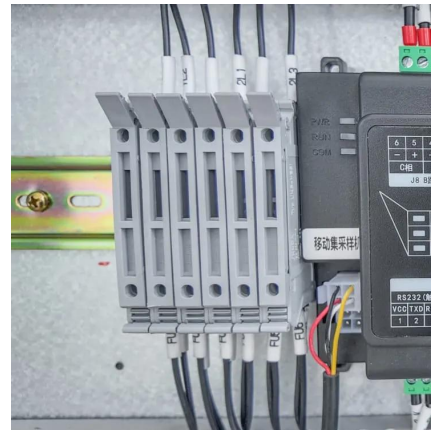


### [How big an inverter should a 50kw photovoltaic power station use](#)

The rule of thumb is to size your inverter 1.25 bigger than your solar array. In some cases, you may need to use multiple inverters to meet your power needs or increase your system's ...

### [How big an inverter should a photovoltaic power station ...](#)

How big an inverter should a photovoltaic power station use How do I choose a solar inverter size? To calculate the ideal inverter size for your solar PV system, you should ...



### [How to Choose the Right Size Solar Inverter: Step-by-Step ...](#)

Wondering what size solar inverter do I need for your solar system? This guide walks you through calculating inverter size based on panel capacity, power usage, and safety ...

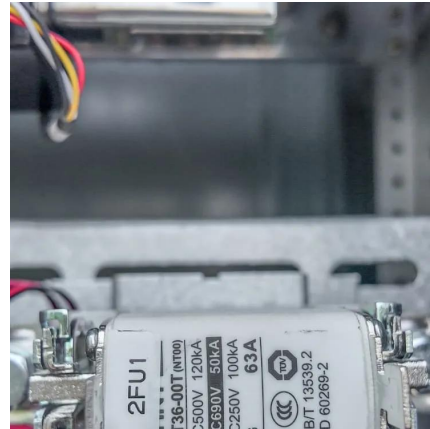


### [How to Choose the Right Size Solar Inverter: ...](#)

Wondering what size solar inverter do I need for your solar system? This guide walks you through calculating inverter size based on panel capacity, power usage, and safety margins. We use real

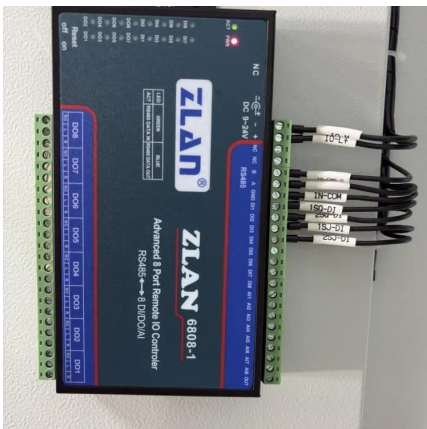


examples ...



### [What Size Inverter Do I Need ?A Complete Guide to ...](#)

Discover how to select the perfect inverter size for your solar or backup power system. Learn to calculate power requirements, account for surge loads, match battery ...



### [How To Size A Solar Inverter in 3 Easy Steps](#)

Discover how to select the perfect inverter size for your solar or backup power system. Learn to calculate power requirements, account for surge loads, match battery capacity, and avoid common mistakes to ...



### [Inverter Size Calculator - self2solar](#)

Determining the Inverter Size to Match the Solar Panel Array Determining the correct inverter size depends on your solar array's capacity and your household's power needs. Generally, the inverter should be ...





## [What Size Solar Inverter Do I Need? Experts Break It Down](#)

Thinking about going solar? Great move. But before you start soaking up the sun, you'll need the right inverter to match your system. This guide breaks down what size solar ...



## [What Size Solar Inverter Do I Need? Experts ...](#)

Thinking about going solar? Great move. But before you start soaking up the sun, you'll need the right inverter to match your system. This guide breaks down what size solar inverter you actually need--so your ...

## [How big an inverter is needed for photovoltaic grid ...](#)

Solar panels operate best at between 30-40V for residential and 80V for commercial systems. While there are single-phase and three-phase grid-tied solar inverters available, residential ...



## [Choosing the Right Inverter Size for a 50kW Power Station A ...](#)

SunContainer Innovations - Wondering what inverter size matches your 50kW power station? This guide breaks down key calculations, industry best practices, and real-world examples to help ...



## Contact Us

---

For catalog requests, pricing, or partnerships, please visit:  
<https://www.woodgoods.pl>

### Scan QR Code for More Information



<https://www.woodgoods.pl>