

How big an inverter should I use for 72v20ah





Overview

What size inverter for a 12V 200Ah battery?

For a 12V 200Ah battery (2.4kWh), a 2000W inverter is ideal. Formula: Inverter Wattage \leq (Battery Voltage \times Ah Rating \times 0.8). Factor in surge power needs but prioritize sustained loads. Always check the battery's max discharge rate (C-rate) to avoid exceeding safe limits. When sizing for 24V or 48V systems, recalculate using the higher voltage.

How big should a solar inverter be?

Generally, it's recommended to size the inverter to 80-100% of the DC system's rated capacity. Before determine the inverter size, the most important thing is to calculate your average daily power consumption (kWh) and calculate your solar panel array size to match your power consumption. You could follow our to make this estimation.

What is the recommended battery size for an inverter?

Interpreting Results: Once you input the required data, the calculator will generate the recommended battery size in ampere-hours (Ah). For instance, if your power consumption is 500 watts, the usage time is 4 hours, and the inverter efficiency is 90%, the calculator might suggest a battery size of approximately 222 Ah.

What voltage should a 12V inverter run on?

The input voltage of the inverter should match the battery voltage. (For example 12v battery for 12v inverter, 24v battery for 24v inverter and 48v battery for 48v inverter Summary What Will An Inverter Run & For How Long?



How big an inverter should I use for 72v20ah



[How to Choose the Right Size Solar Inverter: Step-by-Step ...](#)

Wondering what size solar inverter do I need for your solar system? This guide walks you through calculating inverter size based on panel capacity, power usage, and safety ...

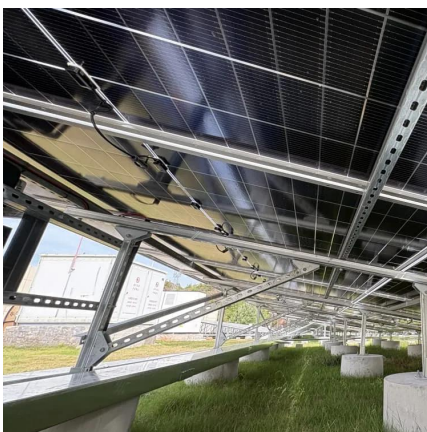
[Inverter Size Calculator - self2solar](#)

Determining the Inverter Size to Match the Solar Panel Array Determining the correct inverter size depends on your solar array's capacity and your household's power needs. Generally, the inverter should be ...



[Solar Inverter & Battery Sizing Calculator](#)

Choosing the correct inverter and battery size is crucial for every microgrid system. Our Solar Inverter and Battery Sizing Calculator provides a simple and user-friendly solution.



[Can an Inverter Be Too Big for Your Battery System?](#)

FAQ Can I use a 3000W inverter with a 200Ah battery? Only if it's a 24V lithium system. For 12V lead-acid, $200\text{Ah} \times 12\text{V} \times 0.5\text{C} = 1200\text{W}$ max. How long will a 100Ah battery last with a



1000W ...



[Calculate Battery Size for Inverter Calculator](#)

The Calculate Battery Size for Inverter Calculator helps you determine the optimal battery capacity needed to support your inverter system. By inputting critical parameters such ...



[Calculate Battery Size for Inverter Calculator](#)

The Calculate Battery Size for Inverter Calculator helps you determine the optimal battery capacity needed to support your inverter system. By inputting critical parameters such as power consumption, ...



[How to Choose the Right Inverter Size for Solar Battery](#)

Is a 5kW inverter enough for a large solar battery? Yes. For example, a 50 kWh battery paired with a 5 kW inverter can deliver 5 kW continuously for 10 hours. Battery size ...





[Calculate Battery Size For Any Size Inverter \(Using Our ...](#)

So I have made it easy for you, use the calculator below to calculate the battery size for 200 watt, 300 watt, 500 watt, 1000 watt, 2000 watt, 3000 watt, 5000-watt inverter



[How to Choose the Right Size Solar Inverter: ...](#)

Wondering what size solar inverter do I need for your solar system? This guide walks you through calculating inverter size based on panel capacity, power usage, and safety margins. We use real examples ...

[What Size Inverter Do I Need for a 72V 200Ah ...](#)

To determine the size of the inverter needed for a 72v 200Ah lithium battery, consider the total wattage requirements of the devices you plan to run. Take into account the surge power requirements of ...



[What Size Inverter Do I Need for a 72V 200Ah Lithium Battery?](#)

To determine the size of the inverter needed for a 72v 200Ah lithium battery, consider the total wattage requirements of the devices you plan to run. Take into account the ...



[Solar Inverter & Battery Sizing Calculator](#)

Choosing the correct inverter and battery size is crucial for every microgrid system. Our Solar Inverter and Battery Sizing Calculator provides a simple and user-friendly solution.



[What Size Inverter Do I Need ?A Complete Guide to ...](#)

Discover how to select the perfect inverter size for your solar or backup power system. Learn to calculate power requirements, account for surge loads, match battery ...

[What Size Inverter Do I Need ?A Complete ...](#)

Discover how to select the perfect inverter size for your solar or backup power system. Learn to calculate power requirements, account for surge loads, match battery capacity, and avoid common mistakes to ...



Contact Us

For catalog requests, pricing, or partnerships, please visit:
<https://www.woodgoods.pl>



Scan QR Code for More Information



<https://www.woodgoods.pl>